

UK Creative Industries Mission to Riyadh

September 2023



GREAT
BRITAIN & NORTHERN IRELAND

Table of Contents

Foreword	3	Panaz	19
Company directory		Proper Copper Design	20
Boss Design	4	PURE FITOUT	21
Burgess Furniture Ltd	5	RICOMAN Lighting	22
Burmatex Ltd	6	Roman	23
Chrome Productions	7	ROOMNET	24
Crowd	8	Searchlight Electric Ltd	25
Cyclopic	9	Shaw Contract	26
Dynamo Kings Ltd	10	Simone de Gale Architects Ltd	27
HALT NFR	11	StudioDS	28
ILIV	12	Studio Lux	29
Inspired by Design	13	Studio Moren	30
Kleen-Tex UK	14	Vero Fabrics Ltd	31
Liqui Group Ltd	15	William Matthews Associates	32
NAME architecture	16	Mission Organisers & Supporters	
Newmor Wallcoverings	17	Commercial Interiors UK	33
Northern Lights Ltd	18	RIBA	34



Foreword

On behalf of the UK Government's Department for Business and Trade, I am delighted to welcome you to the UK Pavilion at the INDEX/Hotel Show here in Riyadh where we are showcasing companies with significant experience across the fields of architecture, design and specialist furnishings and fixtures.

The UK has a strong record of bringing architectural excellence and design expertise to projects across the Gulf region, with British companies involved in many of the iconic projects that have been successfully delivered in recent years. Our group of UK companies participating in the show this week are keen to build upon the UK's record of strong regional collaboration, especially here in the Kingdom of Saudi Arabia, to find out about new opportunities and explore how they might offer their brand of creative ideas and innovative solutions to help bring new projects to life.

Working alongside Commercial Interiors UK and the Royal Institute of British Architects, our showcase brings to you UK creative

companies with a successful track record of helping create memorable destinations & visitor experiences which leave a lasting legacy across tourism, hospitality, retail & brand development. Our companies are keen to establish themselves as a Saudi partner of choice, contributing and playing a full role in the delivery of the Kingdom's Vision 2030 ambitions.

You can find further information and contact details for our companies in this brochure.

I urge you to spend time at the UK Pavilion, meeting the excellent UK creative companies participating at Index/Hotel Show this week. I am sure there will be much to discuss.

I wish all our participating companies a very successful visit.

Graham Ellis
Middle East Business Specialist,
Services & Skills, Exports & UK Trade
UK Government's Department for
Business and Trade

Contact



Angie Moore

Country Business Development Manager - KSA



Dubai, UAE



amoore@bossdesign.com



www.bossdesign.com

Introduction

Since 1983 Boss has redefined how commercial spaces can work, specialising in a range of high-quality furniture and interior architecture that bear all the hallmarks of design, engineering and craftsmanship. As an agile furniture design and manufacturing business we are driven by detail and achieve enviable quality by using quality sustainable materials and processes. The Boss design ethos forms products are at the forefront of design working to create responsible destination spaces.

Description of products/services

Our ambition has always been to make exquisitely designed furniture, of excellent quality and consummate comfort. We've achieved this through our people. Their ideas, skills, knowledge, endeavour, commitment, creativity – all very human notions – go into our all products and give our company its spirit. Technology is an important factor, but ultimately everything we make is shaped by human hands.

Our collections all share the same design integrity and encompass; refined lounge chairs and sofas with exquisite stitch detailing and levels of comfort, with a range of complimentary tables. Chairs and tables that are perfect for café, meeting, and dining spaces. Media units and modular seating systems, provides solutions for technical areas. And pods and screen systems creating private spaces to meet, connect and reflect.

That focus on people continues in our professional relationships – long-term friendships built on trust,



communication, and respect. We listen to our customers and the people who use our furniture, continually improving our understanding of spaces and learning about what people need and want in their day-to-day environment. Since day one, we've been driven to make things people want to use. Beautiful, well-designed, comfortable, functional, sustainable, long-lasting – these are the attributes of what we call human centric furniture.



Contact



Simon Mead
Sales Director



Feltham, UK



smead@burgessfurniture.com



www.burgessfurniture.com

Introduction

Burgess Furniture is Europe's leading designer and manufacturer of high-quality chairs and tables for the hospitality sector. With a rich heritage spanning over 60 years, the company has evolved from its roots in cycling, when founder Gerald Burgess spotted an opportunity for growth in the aluminium handlebars of bicycles to create the world-renowned Burgess stacking banquet chair.

Our client base includes independent and international hotels, conference and convention centres, sports stadiums, work space and care sector.

Description of products/services

With a dedicated sales team and factory in South West London, together with an in-house creative team, Burgess continues to push the boundaries of modern furniture design, producing on-trend and innovative solutions. Recent additions to our portfolio include the Adatta chair, Open Concept and casual seating, together with a wide range of coffee and side tables.



Contact



Ben Woods

Business Manager - International Sales



Ossett, UK



ben.woods@burmatex.co.uk

export-burmatex@aireapl.co.uk



www.burmatex.co.uk

Introduction

Burmatex® is one of the UK's leading designers and manufacturers of contract carpet tiles and planks. With a heritage dating back to 1917 in textile recycling, we uphold this tradition through eco2matters®, our commitment to environmentally conscious manufacturing. Our dedication to sustainability, coupled with our design focus, has resulted in an innovative portfolio that caters to architects, specifiers, and contractors across various sectors and budgets to suit the education, hospitality, leisure, commercial and public sectors. The company has total control over all quality and environmental aspects of its products' design, manufacture, storage, and distribution across 50+ countries.

Description of products/services

Burmatex®'s product ranges include multilevel loop, loop pile, structure bonded®, fibre bonded, cut pile and carpets in sheet and tiles, as well as performance barrier system and entrance matting products.



Our creative design team proves that producing attractive, flexible, contemporary flooring that delivers first class performance is about the alliance of design and technical expertise.

Burmatex®'s continuously expanding office carpet portfolio introduces harmonious and flexible product ranges providing innovative possibilities. With a range of textures and colours, our designs can enhance the creative flow within a project, effortlessly implementing other interior finishes for a striking effect. All Burmatex® products are rigorously tested and supported by a full 15-year guarantee making them ideal for heavy contract situations.

- First company in UK to use Thrive matter® carbon negative yarn in the manufacture of carbon neutral carpet tiles.

- Carbon Neutral and very Low Carbon carpet tiles using Burmatex® BioBase, combined with Econyl® regenerated and Eqocycle 75® recycled yarn.
- Sustainability claims are all independently verified and product specific.
- Burmatex® eco2matters® principles have reduced the embodied carbon content of all products by 36% in the last 14 months, this process is ongoing to deliver continuous reductions.
- Technical highlights include our BioBase® recycled backing, use of recyclable components, Class 33 heavy commercial use wear classification, Euroclass Bfl-S1 flammability, Low VOC's, and a 15-year warranty. Adhesive Free installation options.
- Burmatex® is a major exporter with a network of appointed distributors, dealers and agents throughout the world.
- Burmatex® has adopted the ISO 9001:2015 QMS Management system and to reduce impact on environment is adopting the ISO 14001:2015 EMS Management system.



Contact



Mark Wilson
Executive Producer



London, UK / Los Angeles, USA



mark@chromeproductions.com



www.chromeproductions.com

Introduction

Chrome is a full-service production partner for iconic brands looking to communicate in ways that excite, inspire, and leave a mark. From day-to-day content to complex live broadcasts, social-first campaigns to high-end TV commercials. We believe in being judged by the company we keep – clients who depend on us to keep them ahead of their competition through emotional storytelling, adventurous creativity, and technological innovation.

Description of products/services

Chrome Productions is a full-service, global production company with offices in London & Los Angeles that creates ground-breaking, inspiring, and award-winning commercials, branded content & original scripted and non-scripted programming.

CREATIVE: From the introductory call, our team develops an intimate understanding of the client, objective, and creative possibilities. Every element of the project is treated with expertise from our in-house copywriters, designers, creative directors, and producers. We'll work hand-in-hand with agencies, marketing departments, communications teams, and even C-Suite executives to guarantee that everyone agrees on a creative approach that is in-line with brand, messaging, and budget.

PRODUCTION: Once the creative concepts are approved, our producers assemble a highly skilled team, purpose- chosen to execute the vision. Regardless of how fast the turnaround might be, this creative and logistical prep leads to a smooth and collaborative shoot, whether the solution be a challenging virtual production or high-end TVC, we've got the experience and talent to bring the vision to life. No challenge



is too great, and we pride ourselves in our ability to push boundaries at every level of a production, both creatively and logistically, in order to maximise its - and our - potential.



POST-PRODUCTION: Running alongside our shoot days is our robust editorial prep done by our post department. With a skilled editing stable that has been built over the last twenty years, we're capable of turning raw footage into a first cut very quickly. Client feedback is encouraged at every step of the way as we refine each edit, add sound design, graphics, visual effects, and other finishing elements to each project. With experience in every media discipline, there's no limit to our post- production possibilities.

Contact



Jamie Sergeant CEO
Tom Berne, Managing Director (UAE)



London, UK



results@thisiscrowd.com



www.thisiscrowd.com

Introduction

Crowd is an independent marketing agency specialising in providing Strategic Foresight to help clients explore future territories. We provide local, regional, and international expertise to organisations, governments and businesses as they look to expand their marketing reach. We unlock the potential of deep data and harness award-winning creativity to drive technical innovation, foster local awareness, and expand our client's global reach. Our agency is poised to deliver success not just today, but well into the future. With international clients, we convert global know-how into locally specific campaigns, each designed to speak to select audiences that helps clients achieve their marketplace goals.

Description of products/services

Crowd's marketing services are designed to empower brands, organisations and governments into new markets, and future territories. Each service is driven by Strategic Foresight, to deliver proven success again and again. And by combining our award-winning creativity, and innovative approach to technology, we are ready to help any client meet their local, or global ambitions – no matter how ambitious.

Creative and Content

- Creative Marketing Campaigns
- Marketing Strategy and Production
- Brand Development and Guardianship
- Content Translation, Localisation and Transcreation

- Digital Product
- Web3
- Web Design and Build
- UX/UI Design
- Search Engine Optimisation and Marketing (SEO/SEM)



- Conversion Rate Optimisation (CRO) and Analytics
- Demand Generation
- Market Research and Audience Insights
- Lead Generation and Nurturing
- New Market Activation
- Marketing Reporting and
- Data Analysis



Distribution

- Inbound Marketing and Automation
- Virtual Events and Conferences
- Social Media and Community Management
- Media Planning and Buying
- PR and Communications

Contact



Carol Rallings
Co-Founder



Dorchester, UK



cyclopic@outlook.com



www.cyclopic.co.uk

Introduction

Cyclopic leading Design & Technology Start-Up providing patented Net Zero technology for Smart City / Entertainment Projects. The growing leisure, commercial property & mega-projects in KSA are very suited to the stage our company is at now. The UK Gov have sponsored development of the technologies that provide Autonomous POD with 360-degree manoeuvrability for SMART PARK & complete ground delivery providing a transport system to suit all users! A unique E-Bike & versatile Fly/Drive drone. Cyclopic are excited to showcase their technologies & introduce investment opportunities and partnerships.

Description of products/services

Cyclopic was awarded UK GOV Smart/ AI Grants to develop the patented electric drive-system which is a scalable technology. Producing a ground-breaking modular EV platform which provides space saving interiors, with the ability to carry more passengers & products.



20 UK Patents & International Filings: Our patented centreless wheel - drive system technology is the first on the market to incorporate: - • Drive • Steering • Braking • Suspension • SMART-PARK • Height Adjustment • Level kerbside delivery all in one unit. Transport for all, also supporting users with limited mobility.

Cyclopic recently collaborated with EVIE Pods - leading autonomous POD suppliers for Heathrow Airport, London and are combining their smart technologies to create the next generation of sustainable On-Demand PODs. The electric pod will offer a sustainable, flexible mobility solutions for Smart City re-generation, luxury hotel & entertainment transport.

Cyclopic are developing an E-Bike- Patented unique wheel within a wheel design providing a LIGHTWEIGHT E-Bike with ULTIMATE PORTABILITY. SPACE SAVING, Most compact bike on-the-market. Unfold in 5 seconds and ready to go!

Unfold the Future: Cyclopic are bringing the most compact folding centreless wheel e-bike to the market. Patented folding design - back wheel, saddle, handlebars, pedals all fit inside the front wheel Bike-in-a-Bag. Ideal for last mile solution and travelling for Smart City transport, lightweight and stackable, giving you a unique electric pedal assist bike-which fits in a bag, roll-on the Autonomous pod etc!

The patented technologies have multiple applications including a Fly/Drive drone when the centreless section of the wheel is fitted with an electrically driven lift rotor it provides a SOTA drone with air & ground operation. 360-degree manoeuvrability and height adjustment ideal for surveillance demonstrating crouch mode & fast deployment to air. This patented product is a leading Net Zero solution for Smart Cities & the entertainment industry.



Contact



Maaz Rahman
Director



Teesside, UK



maaz@dynamokings.com



www.dynamokings.com

Introduction

Dynamo Kings is a global digital transformation business that provides innovative digital solution services to clients across multiple industry sectors including Commercial Interiors and Hospitality. We are passionate about helping organisations connect the dots between all the key components of their digital toolkit to create a more engaging and seamless customer experience for our clients. Based in the UK but operating internationally with a highly skilled team of highly experienced digital innovators bringing together the best talent from around the world to deliver world class digital solutions.

Description of products/services

We are excited to share, our state-of-the-art immersive visualisation platform **Dynamo Vision** at Index Saudi Arabia. Users will be able to virtually walk through a series of customised commercial spaces in 3D whilst changing the interiors all in real time and be guided by personalised meta humans to take the customer experience to a whole new level. The best bit is you won't need to invest in expensive VR headsets or sophisticated hardware to get access. The platform will be available through online streaming and clients will be able to incorporate the 3D experiences into their existing website whilst still maintaining optimum performance levels.

Other Digital Services that we offer:

- Sales Enablement Tools & Training; Digitally enabling organisations with the skills and confidence to get the best out of all Digital Communication tools.
- Digital Transformation Solutions; Delivering a strategically constructed digital framework and ecosystem for organisations, maximising impact and revenue opportunities.
- CRM/Marketing Automation; Helping clients understand the entire digital footprint of their customer and delivered personalised digital messaging and communications.



- Video Marketing; Producing world class videos for clients from marketing campaigns to internal motivational messages.

Our consultative and hands on approach that enables businesses gain control of their digital presence and communication channels is what makes us different to the traditional digital agency ethos. We can deliver digital solutions for specific projects or have the capacity to work as an extension of your team to truly understand your long-term business challenges, objectives and be by your side throughout your digital transformation journey. At Dynamo Kings we are passionate about demonstrating the impact of what we do to our clients and the best way for us to do that is through data driven results: "Dynamo Kings were the catalyst for a transformational digital strategy within Shaw Contract. Their ability to work collaborate and focus myriad groups within our organization toward a global omni channel digital presence is unparalleled."



Contact



Noel McKernan
General Manager



Belfast, Northern Ireland



info@haltnfr.com



www.haltnfr.com

Introduction

HALT provides an industry leading timber treatment process utilising BURNBLOCK®, which is an environmentally friendly, natural fire retardant suitable for internal and external timbers. We are the only supplier offering this service in Ireland and all orders are impregnated and supplied from our CE and UKCA certified facility in Belfast.

Description of products/services

HALT's innovative timber impregnation process creates fire retardant timber with the highest achievable protection for wood. This process effectively extends the length of time between ignition and flash point, giving more time for people to escape from a fire – in addition to limiting costs in relation to damage.

Our treatment is fully certified and tested to the highest European fire ratings by the most recognised institutes on the continent. The fire retardant utilised by HALT has been independently tested in order to prove and substantiate its environmental credentials and HALT is the only treatment provider in Ireland that can provide a CE or UKCA certification.



The Fire Retardant used by HALT is Cradle to Cradle Certified® at Gold level. Our impregnation treatment achieves in excess of Euroclass rating B-zs3,d2 and ensures compliance in line with part B of the Building Regulations for Fire Safety. We treat a range of timber species including plywood and thermowood to elevate interior and exterior timber cladding to meet requirements of Euroclass B-s1, d0.

At HALT, we want to contribute to sustainable development around the world. We are committed to



ensuring structurally safer buildings for all and our goal is to ensure we do this with no harm to our local or wider environment.

Our fire retardant is a non-toxic solution made from 100% natural ingredients, causing no adverse impact to our environment. The treatment is water-based and is completely biodegradable – with all components found in either fruits, vegetables or in nature in their elemental form.

In addition, none of the substances within our fire retardant is included in the list of Substances of Very High Concern - SVHC.

Contact



Rui Marques
Head of International Sales



Preston, UK



sales@smd-textiles.co.uk



www.iliv.co.uk

Introduction

Our mission is to design beautiful and unique fabrics to the highest technical specifications for every interior, including both commercial and residential spaces, helping you to create the most comfortable and beautiful environments with style, confidence and precision.

As one of the early pioneers of flame retardant fabrics, ILIV have over 30 years' experience designing and sourcing FR textiles. With a printing facility onsite to meet urgent deadlines, alongside a portfolio of more than 5000 designs, ILIV has a fabric for every space. We pride ourselves on partnership, working with designers and contractors to deliver projects together.

Description of products/services

ILIV has created a range of extremely versatile hard-wearing and durable contract fabrics, perfect for upholstery, curtains, blinds, and soft furnishings in any commercial setting.

ILIV collections are influenced by trends and techniques from around the globe. Including British-made wools, luxurious velvets, in-house prints, woven textures or faux leathers, ILIV has a collection to cover your

requirements. Mixing design with performance, ILIV contract fabrics are extremely durable with high-performance requirements for colour fastness, stability, strength and abrasion.

ILIV TECH provides additional solutions such as sound absorption, anti-microbial treatments, stain resistance, and a wide array of waterproof fabrics and fire retardant fabrics suitable for healthcare, hospitality, cruise, corporate, and residential sectors. In addition to the requirement for fire retardancy, ILIV's continuous commitment to producing excellence has led to many innovative technological advancements.

Whatever the environment, ILIV has a technical solution to ensure durability, compliance, comfort and hygiene, that can help create striking interiors using beautiful fabrics.



Inspired by Design

INSPIRED
BY DESIGN
ILLUMINATING GRACE

Contact



Simon Shuck
Managing Director



Manchester UK



info@inspired-by-design.co.uk



www.inspired-by-design.co.uk

Introduction

Inspired by Design are the British lighting supplier of bespoke and custom designs for commercial and interior projects worldwide.

Description of products/services

Specialised in commissioning, creating and supplying unique lighting from artisanal partners in Europe and worldwide.

With 20 years of experience to draw upon to aid and guide your projects ensuring that your light is exactly what you envisioned; there is no limit to either concept or materials – if you can imagine it then we can create it.

If you need to create your own signature range then the design team is uniquely placed to help you to create it, whether it's a single showpiece or a complete project, Inspired by Design can make your vision a reality.

Projects: Claridges Hotel, Maybourne Riviera, Maybourne Beverley Hills, St Regis Venice, Mason Breguet Paris, Harrods, Buddah Bar London, Blue Diamond Kuwait, Park Hotel Ireland.



Contact



Csaba Király

Area Sales Manager Eastern Europe / Russia & Middle East Africa



ckiraly@kleen-tex.com



Warrington, UK



www.kleen-tex.eu

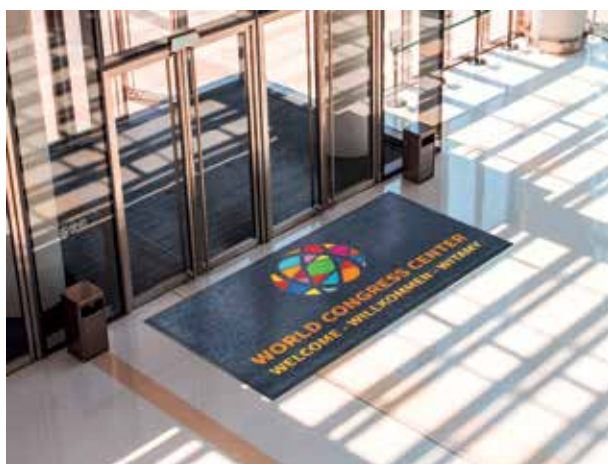
Introduction

Kleen-Tex Industries is one of the world's leading manufacturers of mats with more than five decades of experience in development and production of mats and matting systems. Our name is synonymous with a spirit of innovation, cutting-edge production and print capabilities, a huge range of products to suit every possible requirement and great customer service. Our mats can be found anywhere in the world, in large commercial corporations, in hospitals and hotels, in planes, trains and automobiles, and on factory production lines. Quality, photorealistic print processes enable us to produce mats for a wide range of uses, from a simple welcome message, to a complicated corporate logo. We offer a fast and flexible service to accommodate even the tightest of deadlines, all certified to the highest standards of excellence and delivered with quality seals and full warranties.

Description of products/services

Our unrivalled expertise allows us to produce a wide range of mats for any application, from dirt and moisture trapping to health and safety and anti-fatigue products. Many of our mats are more than just functional and can also be used for promotional purposes to create a personalised and eye-catching message for your customers and your workforce.

Entrance mats: Offer you a choice of product functionality, and if you follow our recommendations to use The Intelligent Approach to matting, you can significantly reduce your cleaning costs and health and safety risk.



Logo & Promotional Mats: Mats enable you to make use of one of the largest untapped communications opportunities – the floor. They can deliver anything from a simple welcome, to reinforcing your company identity. They can promote sales and marketing messages, highlight health and safety hazards, or simply add



a unique design statement to help personalise your building.

Anti-fatigue Mats - Standing for long periods can put pressure on the back and joints, causing pain and inflammation. Well-being mats with high quality cushioning can help reduce such symptoms. Health and safety in the workplace is vitally important for both workers and visitors in a building.

Residential Mats: With our residential mat collection, we offer you a wide selection of exceptional floor mats for the highest comfort. Versatile designs and variations - from a door mat to the carpet - give you creative freedom that underlines your individual lifestyle.

Contact



Steven Chick
Designer



West Sussex, UK



steven@liquigroup.com



www.liquigroup.com

Introduction

Liqui® Group is an award-winning, full service, design practice founded on innovative thinking and a multi-disciplinary approach. This is combined with a commitment to design excellence, sustainability and technical understanding informed by our in-house manufacturing capabilities.

Description of products/services

Our company works in the fields of commercial interior design, contract furniture & lighting design and manufacture. Working in multiple sectors we offer a range of services including office, restaurant, and coffee shop design, as well as retail and exhibition design.



Contact



Nathalie Rozencwajg
Director



London, UK



nathalie@nmearchitecture.net



www.namearchitecture.net

Introduction

NAME architecture is an international architectural practice founded by award-winning architect Nathalie Rozencwajg. Best known for its award-winning Grade II listed Town Hall Hotel in East London, NAME has significant expertise working in conservation areas and with existing and listed buildings. The practice's approach combines a respect for the value of built heritage with an understanding of its clients' long-term business objectives resulting in schemes which are viable, sustainable and beautiful.

Description of products/services

NAME partners with residential and commercial property developers, boutique hospitality brands, and retail groups, tailoring our architectural design services to precisely meet their unique requirements.

Our approach to each project is rooted in treating it as a unique entity, a building with its own narrative and potential to enrich its environment. We specialize in tackling the challenges posed by intricate ventures, leveraging our adeptness in addressing complexities. Our expertise with a variety of regulations and contexts means we can work collaboratively with local partners or develop the initial concept stages independently.

NAME routinely delivers sophisticated and elegant designs, sensitive to their particular setting. We bring a fresh look that differentiates the designs from its competitors. Our global experience, enriched by a multicultural perspective, finds expression in our meticulously thought-out projects.



Contact



Renjith Nair
Regional Manager



Welshpool, UK



renjith@newmorme.ae



www.newmor.com

Introduction

Newmor is an ISO9001 AND ISO14001 certified specialist in commercial quality, wide-width fabric-backed vinyl wallcoverings. We have thousands of stocked surfaces, customisable digital prints, designer collaborations, and an in-house graphics department. A family-owned business started in 1967, we take pride in manufacturing all of our products at our factory in Wales, UK. We use traditional manufacturing techniques and sustainably sourced raw materials, alongside cutting-edge new technology to bring you the best in design and quality.

Description of products/services

From classic woven embosses, tweeds, linens, and silks to contemporary geometrics and metallic effects, we have thousands of textures, colours and patterns in stock. We welcome one-off projects and our friendly design team is on hand to help with every aspect of design and production.

Showcasing our design expertise, our Newmor Custom collection is a range of trend-led custom printed wallcoverings created in-house. The designs can be recoloured, rescaled, and printed onto any of our wallcoverings including textures, metallics and window films.



We're committed to bridging the gap between craftspeople and commercial interiors and to do this we have launched Newmor Designer. Artists such as painters Iona Crawford and Augustus Kotei, interior design duo 2LG, weaver Ptolemy Mann, artist Stephen Walter, Lois O'Hara and The Patternistas are currently represented. We launch new collaborations throughout the year.

We have partnered with Halbmond Carpets to add



quality carpets for commercial interiors to our offer. We supply a range of standard carpets, rugs and carpet tiles, as well as digitally printed and bespoke designs.

We have offices in the UK, Poland, Germany, and Dubai, further supported by a well-established international distributor network. We are currently operating in over 80 countries worldwide. We have supplied thousands of hotel and retail groups, healthcare facilities, marine projects, offices and interior designers, architects, retailers, and leisure groups with our wallcoverings for projects large and small, all over the world.

Contact



Emily Tooke, Global Business Development
Lee Stone, Head of Procurement



Derbyshire, UK



emily.tooke@northern-lights.co.uk
lee.stone@northern-lights.co.uk



www.northern-lights.co.uk

Introduction

Northern Lights have been transforming spaces through luxury lighting for over 35 years. Our passion and expertise enable us to create iconic bespoke lighting on a global scale, with our decorative fittings specified on some of the world's top hotels, restaurants, marine and commercial settings.

By keeping as much of the lighting manufacture as possible under one roof, we maintain full control of the quality at every stage of the process. With decades of manufacturing prowess and generations of innovative design engineering principles, we configure complex techniques in-house to consistently deliver spectacular, unique lighting designs that meet our clients' briefs.

Description of products/services

From bedside lamps and wall lights to six metre bespoke chandeliers, our team of designers and artisan fabricators turn creative visions in to reality. Well-considered design is at the forefront of our bespoke lighting service and close collaboration with our clients is essential. We go deep to gain a solid understanding of everything from the overall design intent to environmental and architectural factors, to ensure we create fixtures that have been strongly considered at every stage of design and production.

We have particular expertise in glass techniques, metal fabrication and an extensive range of completely custom finishes, all produced in our own facilities. Our unique blend of traditional craftsmanship and new technologies allow us to elevate any design vision to turn the sublime in to the iconic. Our solutions cover all aspects of decorative lighting: restaurant, bar & conference rooms, entrances & foyers, guestrooms, spas & public areas, retail stores & shopping malls, cruise liners.



In addition to our bespoke design and manufacturing service we also offer a curated lighting range through our Signature Collection. The collection combines luxury design principles with quality craftsmanship to craft timeless made-to-order lighting that celebrates the materials, finishes and manufacturing techniques we're renowned for.



As experts in metalwork we also develop and manufacture bar gantries, lift surrounds, decorative screens and other metal items. Our range of custom finishes can be applied to match the lighting or décor and compliment the interior for a consistent aesthetic. We're proud to have worked on some impressive projects with the industry's elite and have developed bespoke lighting solutions for the likes of Waldorf Astoria, Four Seasons, Hilton, Harrods, The Hoxton and Venice Simplon-Orient-Express. We provide a world-class service and our clients know when they work with us, they're in good hands.

Contact



Vincent Guillon
International Sales Director



Burnley, UK



vincent.guillon@panaz.co.uk



www.panaz.com

Introduction

Panaz are global designers and manufacturers of high quality, flame retardant, technical, contract fabrics, specialising in the Hospitality, Healthcare, Cruise and Corporate sectors. For over 35 years as UK fabric suppliers, our company has focused on design excellence and differentiation through technical innovation, resulting in a diverse and comprehensive range of beautiful, exclusive and durable fabrics distributed globally.

Today, as one of Europe's largest manufacturers of contract fabrics, we are the supplier of choice for interior designers and specifiers, as well as furniture manufacturers, upholsterers, and drapery makers across the World.

Description of products/services

For over 35 years, Panaz has been designing and manufacturing exclusive contract fabrics for many of the world's leading and iconic hospitality interiors, healthcare, workspace and other public spaces. Our designs are used in hotel guest rooms, hotel public areas, restaurants, cruise ship interiors, nightclubs, bars and indeed anywhere where style and function are prerequisite, as well as in the most demanding healthcare environments.

Our market-leading portfolio of fabrics is designed for challenging environments that demand the best. At the core of the Panaz philosophy is our desire to innovate and develop materials that solve our clients' problems as well as continuously enhancing the features and benefits of our products. This mission has produced technical advancements for our fabrics such as

Acryltron™ and Shieldplus™. These treatments combine in our faux leathers to produce high performance upholstery materials that are durable to 350,000+ Martindale rubs while remaining flame retardant and soil resistant.

Our fabrics offer include rich and stock available collections of vinyl, woven, velvet products. The extent of our design offer is vast, and is complemented by customised capabilities, supported by our design and new product development teams, as well as our digital printing plant.



By choosing Panaz for your clients you are making your selection based on quality, durability, and conformity to international flame-retardant standards, while also maintaining design, colour selection and cost effectiveness as priorities.

Proper Copper Design



Contact



Khan Erkeksoy
Managing Director



Brighton, UK



team@propercopperdesign.com



www.propercopperdesign.com

Introduction

Proper Copper Design was established in 2015 by Khan Erkeksoy and is a leading Design Studio for innovative Copper & Brass interiors hand-made by a talented team in the UK. We take pride in manufacturing luxury homeware from sustainable metals, hand-finished to the highest quality and packaged in Brighton England by talented coppersmiths. We have a growing catalogue of Luxury Showers, Faucets, Kitchen Hardware and Homeware engineered to last for many years to come. Working directly with interior designers, architects and landscape designers to create bespoke solutions that are best suited to state of the art homes and commercial developments. Creating state of the art interiors exporting to over 130 Countries Worldwide.

Description of products/services

Elevate Your Spaces with Outdoor Elegance: Discover sophistication for your garden, sauna, spa, or pool with our Outdoor Showers. Crafted from sustainable copper and brass, our range includes single-feed cold and hot/cold mixer options, hand-finished for a unique touch.

Built to Endure: With enduring copper and brass qualities, our showers resist rust, corrosion, and harsh weather. Winter drainage valves and minimal upkeep ensure year-round strength. **Introducing Our Outdoor Shower Catalogue:** Explore our curated collection of copper and brass showers, designed and hand-finished in Brighton, England. Our diverse catalogue offers styles from manual mixers to exposed designs, contemporary vibes, and heritage thermostatic valves.

Elevate Your Cabinets with Unique Handles: Revitalize your cabinets with stunning copper, brass, and chrome handles. Over 160 designs, meticulously hand-crafted in Brighton, await transformation.

Browse Our Handle Catalogue (Available on Request): Explore exclusive handles, from classic cup styles to

intricate folded designs. Immerse yourself in the art of transformation.

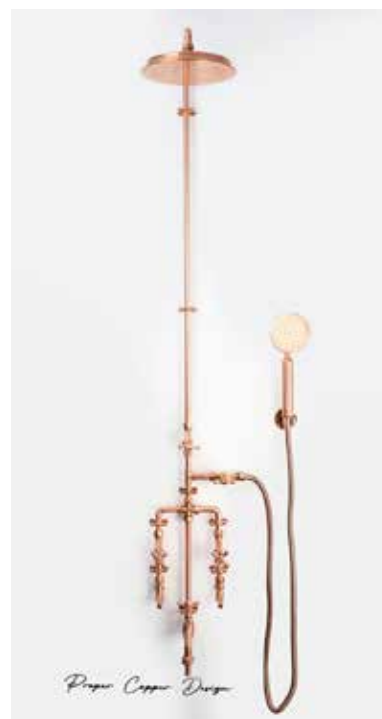
Luxurious Taps for Inspired Spaces: Transform your kitchen or bathroom with our original copper and brass tap designs. Crafted with care, they blend style and durability.

Discover the Advantages: Experience taps with durability, sustainability, and antimicrobial properties, tailored for your projects.

Explore an Array of Finishes: Choose from Natural Copper, Satin, High Polish, Antique, Marbled, and more. Available across all our product ranges.

Samples and Finishes at Your Fingertips: Experience quality first-hand with our ready samples and finishes document. Discover elegance meeting functionality.

Tailored Perfection—Custom Services Available: Crafting bespoke designs to match your vision. Modify existing designs or create new pieces with our team.



Contact



Ronan Higham, Managing Director
Gary McCloskey, Commercial Director



Northern Ireland, UK



info@purefitout.com



www.purefitout.com

Introduction

Established in 2015, Pure Fitout is a specialist fitout contractor delivering bespoke interiors for luxury brands and leisure operators. In the years since our foundation, the company has grown from a small business with a handful of employees to turning over €20m in 2022 with over 100 staff. Our team boasts some of the most knowledgeable and experienced figures in the construction industry. We operate from a fully equipped, 50,000 sq. ft. manufacturing plant where we have a team of experienced and skilled joiners and metal fabricators who design and create spectacular pieces of craftsmanship.

Description of products/services

We deliver elite fitout projects encompassing all elements of design, construction and support services with specialist bespoke joinery and metal work capabilities in house. From small, bespoke individual shop fittings to major commercial rollouts, all projects are managed with the same commitment to quality, guaranteeing value for money with consistent high quality delivery expected.

We have worked in a variety of industries and sectors including hotel, hospitality, retail and sport. On the business side, our team consists of Operations, Finance and Commercial directors with almost 100 years' combined experience in the construction sector.

Our support divisions consist of talented individuals and teams incorporating all aspects of business including sales, marketing, accounts and administration. We have worked in a variety of industries and sectors including hotel, hospitality, retail and sport.



Our client list includes major global players such as Radisson Blu, The Maybourne Group, Krispy Kreme, Ted Baker and citizenM as well as some of the biggest sporting organisations in the world. We have also worked for and with numerous high profile British and Irish brands including Press Up Group, NolaClan, K-Club and Russell & Bromley. Our expertise in manufacturing and installation turns our clients' vision into reality.



Contact



Liang Gao, Managing Director
Richard Green, Marketing Manager



Manchester, UK



sales@ricoman.com



www.ricoman.com

Introduction

Creating a more sustainable and brighter future through innovation - RICOMAN Lighting is a leading commercial and industrial lighting manufacturer based in Manchester, UK. With over 20 years of experience in lighting design and manufacturing, RICOMAN offers a wide range of high-quality lighting solutions for many different applications. Our commitment to innovation and sustainability has enabled us to become a trusted lighting brand in the UK, known for our excellent customer care, industry lead supply times and bespoke project solutions. We work closely with M&E consultants, architects, builders, contractors, and electrical wholesalers to deliver projects on specification, on budget, and on time.

Description of products/services

RICOMAN Lighting specializes in the design, manufacture, and supply of commercial, residential, hospitality and industrial lighting solutions. Our vast range of products includes LED panels, downlights, high bays, floodlights, wall lights, emergency lights, and linear lighting solutions. We also have strong relationships several established industry partners to supply quality and cost saving sensors and controls.

At RICOMAN, we have three business divisions: OEM, Specification, and LightRevive.



Our OEM division offers manufacturing and design services for original equipment manufacturers (OEMs) and lighting designers. We work closely with our clients to develop bespoke lighting solutions that meet their exact specifications. Our Specification division focuses on providing lighting solutions for projects. We work with MEP and lighting consultants to offer full CAD design and support, 3D renders, fully compliant lighting designs, and technical/design advice. Our LightRevive division is dedicated to remanufacturing

and recycling of existing luminaires, reducing waste and environmental impact.

At RICOMAN, we are committed to reducing our environmental impact. We have implemented a range of sustainability initiatives, including electric car fleet, elimination of plastics in packaging where possible, recycling packaging with a cardboard shredder for order packaging, growing UK production, and Europe-based supply chain. Our circular economy product design and manufacture also enables us to reduce waste and increase the lifespan of our products.

Our team of skilled lighting designers and project managers work closely with our clients to provide bespoke project solutions. Our commitment to innovation means that our products are always at the cutting edge of the industry, delivering exceptional performance, energy efficiency, and sustainability. RICOMAN Lighting offers a wide range of lighting solutions for different applications, providing maximum value to our customers.



Contact



Freddie Metcalfe

International Sales Manager



Darlington, UK



info@roman-showers.com

f.metcalfe@roman-showers.com



www.roman-showers.com

Introduction

The UK and Europe's leading showering solutions designer and manufacturer. Roman has been designing and manufacturing beautiful showering environments for nearly 40 years and is home to the UK's largest shower manufacturing plant.

Roman's core values are in excellence in product quality, unrivalled customer service and a meaningful lifetime guarantee. All Roman products are designed and created in Britain, offering the ultimate in quality, precision and craftsmanship.

Roman has a strong focus on the Circular Economy - all materials used in Roman's manufacturing processes are 100% recycled before use and after use. Roman achieved Carbon Neutral status in 2021.

Description of products/services

Roman offers a diverse and versatile range of products, encompassing something for every style and shape bathroom – covering every budget. Roman differentiates itself from the competition with their innovative and exceptional product design. Roman consider different users' needs, giving totally effortless entry into the shower enclosure for the whole family.



All Roman products are designed and created in Britain, are fully UKCA and CE compliant and exceed all international standards with full traceability for a minimum of 10 years, offering the ultimate in quality, precision and craftsmanship. This includes shower enclosures; bath screens; wetroom systems; solid surface anti-slip shower trays; and solid surface fabrication of basins, vanity units and bathroom structures; with case goods and furniture integrated into its designs.

Roman only use the finest quality of materials to guarantee unsurpassed quality and certainty in the manufacturing process, ensuring all products reach exceptional levels of style and performance.

Shower designer and manufacturer, Roman has been providing bespoke designer showering solutions for the bathroom within the hospitality and project sectors for over 40 years. Currently operating in over 72 markets worldwide, the brand is well-established among key international hotel groups, architects and designers – offering huge flexibility in design – highlighted by a choice of glass thickness and 16 colours of frame finish.



Contact



James Coonan
Director



Hitchin, UK



James.coonan@roomnet.com



www.roomnet.com

Introduction


ROOMNET's guest entertainment solution, in partnership with Apple, is transforming how guest access their favourite content and engage with your hotel. ROOMNET's Apple-based TV platform enables hotel operators to drastically enhance guests' user experience by allowing them to access their personal and favourite content alongside hotel services, resulting in happier guests, great reviews and additional hotel revenue streams.

Description of products/services


ROOMNET's APPLE TV solution has several advantages for hoteliers. It not only attracts new customers but also increases customer loyalty by exceeding modern guest expectations. The platform offers a one-of-a-kind opportunity for marketing guest services, which leads to increased revenue generation as guests are encouraged to use the TV services again. Furthermore, it ensures future-proofing and reduces content-related costs. Another advantage is that there is no need to replace existing TVs, which contributes to cost savings. The integration of the Property Management System (PMS) ensures that all guest data is cleared upon check-out, improving data security and privacy measures.




Contact

 **Mike Newland**
Middle East Sales Manager

 Manchester, UK

 mnewland@searchlightelectric.com

 www.searchlightelectric.com
www.projectcollection.co.uk

Introduction

The Searchlight Group is one of the UK's largest and longest established lighting companies. Established in 1945, Searchlight are a leading full range designer, manufacturer and supplier of decorative lighting for the residential, hotel and hospitality markets. We understand your need for a responsive supplier offering quality on-trend products, at competitive prices with a focus on energy efficiency.

Searchlight has been supplying the Middle East and Saudi Region for over 15 years and we currently export to over 60 countries.

Description of products/services

Searchlight are a leading full range designer, manufacturer and supplier of decorative lighting for the residential market.

With a range of over 3000 stocked products in our UK and Polish warehouses, we can be a one-stop solution for all your lighting needs; supplying products such as pendants, wall-lights, down-lights, bathroom fittings, table lamps, floor lamps spotlights and outdoor lighting. We also can supply more architectural items from our Project Collection. Furthermore, from in-house design to joint venture manufacturing operations, Searchlight are able to deliver 100s of new products to market annually.

Innovative and contemporary lighting designs are supplemented with traditional and modern classics to meet all styles, customer requirements and quality standards meeting all relevant international standards.

We have offices in France and Germany with dedicated showrooms in our Manchester head office and Dutch office.



Contact



Paolo Vaccarello

Commercial Sales manager Middle East & Africa



Sanquhar, Scotland



paolo.vaccarello@shawcontract.com



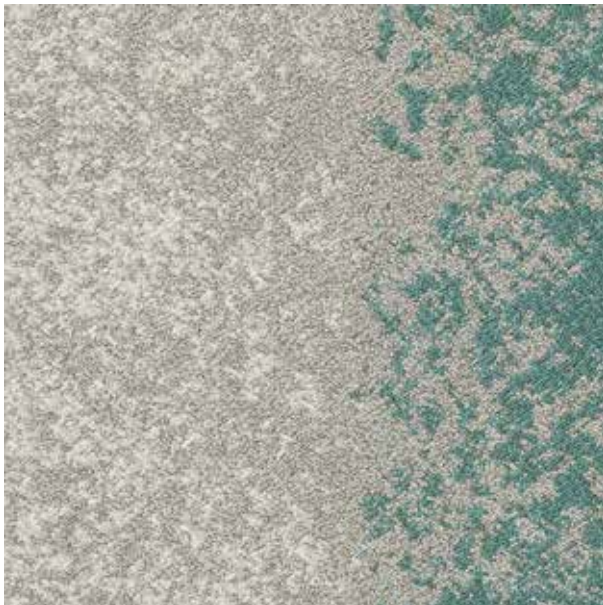
www.shawcontract.com/en-gb/

Introduction

Shaw Contract, the commercial division of Shaw Industries, the world's largest carpet manufacturer and a leading floor covering provider. Shaw Industries Group, Inc. is a vertically integrated manufacturer that supplies carpet, carpet tiles, hardwood, resilient to residential and commercial markets globally. Headquartered in Dalton, Georgia, and with manufacturing in the United States, Scotland, Mexico and China, Shaw is a subsidiary of Berkshire Hathaway, Inc. with more than \$7 billion in annual sales and 23,000 associates worldwide.

Description of products/services

Carpet, Carpet tiles, Resilient, Hardwood



Contact



Simone de Gale
CEO



London, UK



newbiz@simonedegale.com



www.simonedegale.com

Introduction

Simone de Gale Architects are based in Belgravia, London, UK. Our style is grounded in mathematical principles, each project exploring the science of rhythm, pattern and repetition. Ranked on Spear's 500 Index as Top Recommended Architect 2023 for High-Net-Worth Clients. Winner of 'Architect of the Year' for Women in Construction UK Awards. Our portfolio consists of commercial masterplans, super-prime residential, mixed-use schemes, and luxury retail in Central London and Internationally, including a £5.65m sq.ft. masterplan in Tbilisi, Georgia and 200 luxury apartments in Croatia overlooking the Adriatic Sea.

Description of products/services

From Concept to Completion, our Architecture service generally follows the RIBA Plan of work Stages 0 – 7. We work closely with our Clients to develop a brief for a project, and then complete the work required to develop a fitting concept and detailed design which will gain government approvals. We typically work on large scale masterplan mixed-use, commercial, and residential projects.

We are best positioned to understand the interpretation of our design, therefore, we complete the project management aspects of the construction work, delivering an unmatched quality control process of our designs as they are built, and value engineering aspects of the design which have evolved through the approvals process, to ensure risks in timing, buildability and budgets are mitigated as much as can be expected, and to deliver on site excellence through tangible results. Our Clients receive directions on operations and maintenance of their newly built projects, to sustain the building throughout its lifetime.

Our work delivers a beautiful new building or city, transforming an area and environment. Some of our largest project work is founded on planning schemes, and here, we provide a service to our Clients where we are able to take a cultural influence or character of an area and give it new life in the form of new buildings, public realm and infrastructure. We respect political influence, and use this to gather interest of the project. We work with communities and develop a design which is likely to satisfy our Client, all parties and stakeholders. We provide our Client with a deliverable scheme, and then we work with the Client to deliver the architectural components of the buildings on the masterplans.

Our aim in all cases is to build long term relations with our Clients, Communities and Governments we work with, to ensure work is to the highest standard.



Contact



Diba Salam
Founder & Principal



London, UK



diba@studiods.co.uk



www.studiods.co.uk

Introduction

Diba Salam is the Founder and Creative Director of StudioDS, a dynamic London based creative agency, specialising in architecture and ESG Consulting. As signatories to the UN 'Race to Zero' campaign, StudioDS core values are routed in promoting UN SDGs through designing efficient, adaptive, and effective communities, aligned with Saudi Arabia's 2030 Vision.

Diba is an active voice in promoting sustainable innovation and diversity in the built environment through her current and past roles as UK Built Environment Ambassador during COP 26 for UK Green Building Council, Woman in Construction Ambassador, RIBA International Committee member and UK Export Champion with the Department for Business and Trade.

Description of products/services

Diba Salam is the Founder and Creative Director of StudioDS, a dynamic London based creative agency, specialising in architecture and ESG Consulting. As a RIBA Chartered Practice and signatories to the UN 'Race to Zero' campaign, StudioDS core values are routed in promoting sustainable initiatives, guided by UN SDGs through designing efficient, adaptive, and effective communities, aligned with Saudi Arabia's 2030 Vision.



Our services contribute to our clients and partners vision and commercial success through:
ESG Consulting : Design Workshops : Branding DNA/
Legacy & Storytelling : Architectural Design
Environmental Design : Interior Design : Placemaking/
Urban Design

Diba is an active voice in promoting sustainable innovation and diversity in the built environment through her current and past roles as UK Built Environment Ambassador during COP 26 for UK Green



Building Council, Woman in Construction Ambassador, RIBA International Committee member and UK Export Champion with the Department for Business and Trade.

The studio's experience working in the Middle East and Asia has forged partnerships amongst local artists and trades fostering a design philosophy rooted in cultural sensitivity and shared learning.

Our collaborations extend beyond aesthetics; we actively engage with stakeholders to create places that resonate with communities. Our placemaking expertise transforms spaces into thriving hubs, enhancing urban experiences while respecting local heritage.

We actively engage in research projects that inform the industry roadmaps. Our pursuit of enhancing health and wellbeing through design, fostering biophilia, and integrating smart technologies underscores our commitment to holistic environments. This allows continual development, in line with Saudi Arabia's Vision 2030 and the global call for a more sustainable and inclusive world.



Contact



Hongdi Li
CEO



London, UK



hongdi.li@studio-lux.co.uk



www.studio-lux.co.uk

Introduction

Studio Lux is an architectural and artistic hybrid practice based in London and Shanghai, the multifaceted portfolio encompasses architecture, art objects, and 3D production. The practice has won architectural competitions and awards in the UK and overseas including Beirut Blast Memorial, Muscat Airport concourse lounge lighting installation, and the pedestrian bridge and revitalising landscape at art quarter Shanghai. Integrating modern technology and traditional craftsmanship, the marble collection is listed at the art and craft gallery Curio Space. <https://www.curio.space/maker-detail/studio-lux>

For 10 years, the 3D production is behind many prominent projects, including Doha Cruise Terminal Qatar, Bausher Heights Oman, and University of Melbourne campus long-term master plan.

Description of products/services

Studio Lux offers the designs driven by story-telling, interpretations of experiencing the world, no matter for commercial interior, architecture, public realm or visual focal installations. The design principal has extensive experiences of creating exquisite spaces from completing boutiques of luxury brands including Hermes and Bally; also the knowledge of designing for public space from the mixture of mid to large projects. The practice's approaches embrace different climates,



cultures and nature as sourcebook, this inspires the designs to resonate the cultural contexts with creating multi-layers and evoking experiences, also articulate the economy and social ideas.

Studio Lux's art objects bring more adventurous design,

integrating traditional crafts and meticulous material selection. Crafted as functional art, the pieces of wall and table sculptures, mirrors and lamps are perfect for fine home curation, and distinctive and luxurious hospitality interior identities.

The new Keep Moving collection launched in spring 2023 embodies the essence of movement, and the

philosophy revolves around 'changing and moving'. Each piece narrates a tale of spatial motion, capturing dynamism and the art of gravity manipulation. Utilising the repurposed marble cut-offs, the 3D strength, design engineering and the metalwork crafts come together into Atom, Eclipse, Lunar, Planets themes.





Lux Visualisation offers complete visualisation services - image, animation & visualisation production for all scales. The technology capacity, excellently skilful team and industry expertise are dedicated to taking the client's projects seamlessly through design model, file translation, adding props, image or animation rendering and post-processing & finishing. Quality, Speed and Reliability come together starting from the client-facing principals responding rapidly and discussing the briefs professionally, crafting through each round till delivery. Satisfied clients include Foster & Partners, Obayashi Corp, HB Reavis, Hassell, John Robertson Architects, Denton Corker Marshall and more.

Contact

 **Wan Sheong Gardner Yau**, Partner
Herbert Lui, Partner

 wany@studiomoren.co.uk
herbertl@studiomoren.co.uk

 London, UK

 www.studiomoren.co.uk

Introduction

We are Studio Moren, an award-winning practice of 70+ people working across hotel and residential architecture, urban planning and interior design. Over the last 31 years in business, we have established a world-renowned reputation in the hospitality sector. Today we bring the same combination of design, commercial and human understanding that made us known in hotels to everything we do. We don't believe in following trends, instead, we draw our design inspiration from a building context and local neighbourhood to create spaces with longevity that are authentic, and above all have character. With meticulous attention to detail, we create striking designs that embrace our client's aspirations whilst also meeting their operational and commercial needs.

Description of products/services

Studio Moren's experienced design team works across the entire hospitality spectrum from limited service through to luxury hotels, conference venues, resorts and spas for clients such as Hilton, Accor, Marriott and InterContinental, along with various independent operators and developers. Our work has been acknowledged with numerous industry design awards. With over 80% of our work coming from repeat business & referrals we hope this speaks for itself in terms of the service and added value we provide to our clients.



Sustainability: Studio Moren's goal is to constantly push to build with greater efficiency and keep sustainability at the forefront of what we do.

The construction process, and buildings in general impact our natural habitats and account for a significant amount of energy-related carbon dioxide, therefore everyone working in the sector has a responsibility to look for more sustainable ways to build and manage our built environment. We follow the principle that a building is not a good design unless it is also sustainable.

As a sign of our commitment to change we are signatories to the UK Architects Declare Climate and Biodiversity Emergency initiative and reiterate our



commitment to this. We also commit to undertake to run our practice in as sustainable a way as possible, as we acknowledge that the climate crisis is now at a point where urgent action is necessary. We are investing in training for staff so that they have the skills needed to take this initiative forward, and are making a fundamental change in our thinking, pushing sustainable design at the earliest stage of development.

BIM - At Studio Moren we have integrated BIM across architecture and interior design, and across all work stages, from concept through to project delivery with great success. By working in BIM from the early stages, we can quickly revise and adapt the model at each design iteration in line with our client's requirements.

Contact



Amanda Purves
Sales & Marketing Director



London, UK



amanda@verofabrics.com



www.verofabrics.com

Introduction

Vero Fabrics is a luxury textile studio working closely with the world's leading interior design teams and procurement companies. At the heart of the company is the unique ability to work at a very personalised and bespoke level interpreting creative concepts and implementing FF&E briefs. Collaborating on prestigious projects across the globe, in both the hospitality, marine and residential sectors, the team has the skill and resources to react quickly and effectively to clients' needs. From weaving custom colours and bespoke Jacquards to sourcing and procuring a diverse portfolio of highly crafted dynamic textiles, Vero Fabrics has the design and manufacturing credentials to meet such demands.

Description of products/services

Working in collaboration with the finest mills both in the UK and Europe, Vero Fabrics has the capacity to deliver high volume orders on time and on budget. Our dedicated team is quick to respond to procurement requests, budget demands and MUR deadlines. We have extensive knowledge of the Hospitality sector and specialise in value engineering fabrics to meet tight budget requirements whilst retaining their luxurious appeal. This is evident in our latest collection which incorporates elegant wide width textures and ombre drapery which caters exclusively for hospitality and marine use. This collection can be custom coloured and is also available in recycled yarns.

For further information on the collection and any bespoke or sourcing requirements, please contact us and we will be happy to discuss your requirements in more detail.



Contact



William Matthews, Director
David Walker, Director



London, UK



William.matthews@wma.co
David.walker@wma.co



www.wma.co/

Introduction

William Matthews Associates is an award winning architecture practice based in central London. Since 2013 the studio has worked in the UK and internationally on a range of cultural, commercial and infrastructure commissions, completing critically acclaimed projects such as the Tintagel Castle Footbridge in Cornwall, UK, which was shortlisted for the 2021 RIBA Stirling Prize, the UK's most prestigious architecture prize.

Description of products/services

WMA has a diverse portfolio of work ranging from large scale commercial schemes through to small scale cultural buildings as well as several bridges and infrastructure projects. We work with committed public and private clients including English Heritage, Canary Wharf, the London Legacy Development Corporation and HS2.

Although based in central London, the practice has a global presence having won several competitions in central Europe, North America and in the Middle East.

Current projects include:

- A major regeneration scheme for Borovets, Bulgaria's largest ski resort.
- A one million square foot commercial building in downtown Vancouver, Canada.
- HQ of Správa Železnic – the Czech national railway company – in central Prague.
- A new road bridge over the river Svitava in Brno, Czechia.
- A prominent building for HS2 at Euston Station, London, UK.
- A cable car network in central Prague including three stations and five pylons.
- A road/ pedestrian bridge in central London.
- A private house on the White Cliffs of Dover.

More recently, WMA won two international design competitions in The Kingdom of Saudi Arabia. One for a private house in Al'Ula and one for a significant cultural building for the Ministry of Culture.



Butrint Visitor's Centre, Albania (Credit Kin Creatives);



Tintagel Castle Footbridge (Copyright Hufton & Crow)

Mission Organisers & Supporters


Commercial Interiors UK




Contact

 **Sue Graves**
Head of International Business Development

 Flackwell Heath, UK

 sue@commercial-interiorsuk.com

 www.commercial-interiorsuk.com

Introduction

Commercial Interiors UK (formerly the BCFA) is the UK's business association for the commercial furnishing industry, covering the full spectrum of interior products and services in the UK and globally.

Commercial Interiors UK are proud to have facilitated this mission on behalf of the UK Government's Department of Business and Trade.

We are the only association representing commercial interiors as a whole and collectively our 200+ members represent an unrivalled association of businesses and leaders who champion the best of UK interior and product design, and sustainable manufacturing.

Description of products/services

As a trade association, our purpose is to lead, inspire and support the growth and global success of the UK's commercial interiors community, creating a sustainable future for our sector. Our vision is to create a world with the most inspiring and productive commercial spaces, designed and furnished with exceptional UK products.

Commercial Interiors UK Directory is our annual publication that showcases all our members and also covers the specification chain of all market sectors, reaching out to an audience of specifiers, architects, consultants, designers and buyers. To download a copy visit <https://www.commercial-interiorsuk.com/annual-directory/download-your-copy-full-2023-annual-directory>

Design Insider is an online magazine associated with Commercial Interiors UK which recognises the exceptional expertise of commercial interior designers and supports their work by publishing the latest knowledge, products, projects, news and events from within the commercial furnishing sector see <https://www.designinsiderlive.com/>



Contact



Dr Valerie Vaughan-Dick, MBE,
Chief Executive Officer



London, UK



For contacts see below



www.architecture.com

Introduction

RIBA is a global professional membership body and cultural organisation driving excellence in architecture. We help our members and society to deliver better buildings and places, stronger communities, and a sustainable environment. We work with governments, industry bodies and other stakeholders to shape policies and regulations that affect the built environment. We also promote public awareness and understanding of architecture and the value architects can offer. Being inclusive, ethical, environmentally aware and collaborative underpins all that we do.

Description of products/services

We provide a wide range of services to support architects in their professional life, including training and continuing professional development (CPD), networking opportunities, and business support. Our products include architecture books and construction contracts, the world's largest collection of architectural drawings and images, a job board and award-winning venue hire. Our suite of business products and services will help you run and manage your business. They can help you manage projects from client engagement, fee calculation and proposal, through to contract preparation, and fee and project management.

RIBA has supported the principle of architectural competitions since 1871 and is widely recognised as one of the leading providers of competition management services. RIBA Competitions ensures that competitions are run to the very highest standards of governance, meeting procurement regulations (where applicable) and following best practice principles developed over the past 50 years. We deliver choice, inspiration and value to clients through expertly run architectural competitions and competitive selection processes.

A RIBA Competition brings:

- Expertise – an experienced team that will design the competition to fully meet your requirements.
- RIBA endorsement – alignment with the RIBA brand ensures that your competition will be efficient, fair and will adhere to best practice standards.
- Promotion – we are able to promote your competition to an audience of 52,000+ global members and associates.
- A full audit trail – we provide a full and comprehensive audit trail of the competition process.



Design Review: This is an independent design review service which is devoted to generating a strong sense of place in living, working and leisure environments. The service works across public, private and third-party sectors to improve the skills and knowledge of all those involved in new development, promoting good design and encouraging strong client leadership. Our expert review panel provides timely and impartial advice that can add value to the development process, operating under the widely recognised Ten Principles of Good Design.

For international queries:

Emmanuelle Meunier,
Partnerships Manager (International Institutes)
emmanuelle.meunier@riba.org

For commercial opportunities:

Karen Beamish,
Executive Director Products & Services
karen.beamish@riba.org

Steven Cross,
Director of Commercial Development,
steven.cross@riba.org



GREAT
BRITAIN & NORTHERN IRELAND

Department for Business and Trade

We support growth by backing businesses in the UK and globally, promoting investment and championing free trade.

Disclaimer

Whereas every effort has been made to ensure that the information in this document is accurate, the Department for Business and Trade and the Contributors do not accept liability for any errors, omissions or misleading statements, and no warranty is given or responsibility accepted as to the standing of any individual, firm, company or other organisation mentioned.

© Crown copyright 2023

This publication is licensed under the terms of the Open Government Licence v3.0 except where otherwise stated. To view this licence, visit <https://nationalarchives.gov.uk/doc/open-government-licence/version/3/>

Where we have identified any third party copyright information you will need to obtain permission from the copyright holders concerned.

Published by
Department for Business and Trade

September 2023



UK Government