

N°.3

# WORK SHOP

WINTER · 2022



A JOURNAL OF COMMERCIAL  
INTERIOR PROJECTS

[andythornton.com](http://andythornton.com)

# WORKSHOP

WINTER · 2022

04.

## CHATEAU DENMARK

Inspired by the birthplace of the British music scene, Chateau Denmark boldly reflects Denmark Street's best loved sentiment; creative expression and escapism.



08.

## HOTEL BROOKLYN

A New York warehouse aesthetic meets Leicester's sporting favourites to provide a level playing field for guests with access requirements



12.

## NEW EUROPEAN PRODUCTS

Contemporary chairs sourced from across Europe including a selection of lounge chairs and stackable products.

16.

## GLASGOW GOLF CLUB

When fire ravaged this historic golf course the club took the opportunity to modernise and redesign with the future in mind.



20.

## GREENS RESTAURANT SALE

A vegetarian restaurant with a Californian aesthetic and some super sustainable furniture. Greens is also situated in a brutalist shopping centre now reimagined as a foodie heaven.

## ANDY THORNTON

SINCE 1975



24

## INN COLLECTION PORTFOLIO

The Inn Collection Group has an ever-expanding portfolio of impressive pubs with rooms across the north. We look inside three recent refurbishments - The Northallerton, The Seaburn and The Hog's Head Inn.

28.

## ANDY THORNTON ANTIQUES & EXCLUSIVES

Exclusive products from Andy Thornton including a Q&A feature on our Waiter Station range as well as antique picks from the showroom.

33.

## CARDEN PARK

From Victorian pier to luxury Chester spa Hotel: Carden Park's upgraded wedding gazebo preserves Britain's architectural heritage.

ANDY THORNTON LTD  
T. +44 (0)1422 376000  
SALES@ANDYTHORNTON.COM

CHATEAU DENMARK, LONDON

# EXPECT THE UNEXPECTED

INSPIRED BY THE BIRTHPLACE OF THE BRITISH MUSIC SCENE, CHATEAU DENMARK BOLDLY REFLECTS DENMARK STREET'S BEST LOVED SENTIMENT; CREATIVE EXPRESSION AND ESCAPISM.

CLIENT  
CAW VENTURES  
INTERIORS  
TAYLOR HOWES

Denmark street is where the Rolling Stones recorded their first album, Jimi Hendrix often frequented, the Sex Pistols once lived and Chrissie Hynde spent time and where many believe, Ziggy Stardust was born the design of Chateau Denmark had large Doc Marten's to fill, but it's obvious designers Taylor Howes relished the job at hand, and executed the task with playful exuberance.

**NO-HOLDS-BARRED DESIGN.  
UNASHAMEDLY OTT  
— THE INDEPENDENT**

Fine materials, modern craftsmanship and traditional artisan techniques merge to create bold and playful interiors that not only seamlessly compliment the lasting legacy of the street but also set it on a journey for tomorrow.

**NO HALF MEASURES...  
TONGUE IN CHEEK  
ATTITUDE — THE TIMES**

Four different design styles across 16 heritage buildings, Chateau Denmark is one of the most innovative designs we've had the privilege to work on in years. The hotel consists of 55 'Session Rooms' and Apartments each kitted out with a distinct style: *Vintage Gothic* captures a particular charm and presents dramatic intrigue. *Timeless Grandeur* offers an opulent and indulgent Victorian-era aesthetic. *Modern Psychedelia* brings 60s and

70s London to life through texture, finishes and striking palettes. *Punk Now* is a modern interpretation of the raw, anti-establishment movement, presenting the irreverent side of being far less than authoritarian.

**WHAT SETS CHATEAU DENMARK APART FROM THE CROWD? ALMOST EVERYTHING — COUNTRY AND TOWN HOUSE**

The attention to detail on the furniture specs was unparalleled. Most of the pieces were bespoke creations which needed a lot of testing and development along the

way as we made prototypes with different materials to achieve the look which needed to be both contract grade and commercially viable. The project certainly pushed our manufacturing and sourcing capabilities and the end results for the whole venue are spectacular.

**SENSORY OVERLOAD  
IN THE BEST WAY.  
— CONDE NAST  
TRAVELLER**

Unique bespoke creations complete an irreverently breathtaking design





## THE DEVIL IN THE DETAILS: HANDCARVED BEDROOM DESKS WITH SKULLS

These bespoke desks designed by Taylor Howes are made from solid wood which is then ebonised with a satin finish and topped with toughened glass. The feature detail is a central carving which incorporates a skull detail, but there are smaller touches such as antique brass pulls to each drawer and carved details on the legs. The bedroom desks are paired with PVC poufs upholstered

in Studiutex ripple Ebony fabric, Dedar underglass piping with Houles Savanna Fringe to complete the look. Like tartan, PVC, rubber, leather and other fabrics associated with transgressive sexuality were also a hallmark of punk clothing; here the PVC upholstery provides an edgy contrast to the rich textures found elsewhere in the scheme.



## DESIGN IDEAS THAT HAVE LEGS, WELL, BRONZE CAST FEET

These mango wood bedside units have soft close drawers with matching inners and toughened glass with a bevelled edge on top. A router was used to cut inscriptions on two different types - one reading 'Toys', the other 'Naughty'. They are filled

with gold paint and written in 'Inked Bones' a serif typeface for extra decadence. Arguably the most unique detail is the cast iron feet in antique brass finish found on the base of each. These feet were moulded on one of the workers in our factory!



Tartan side chairs with mohican fringe trim

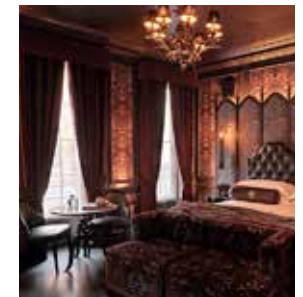
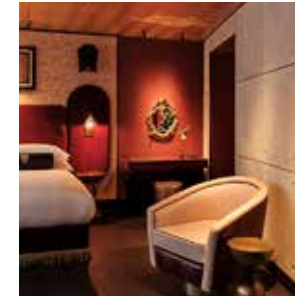
Tartan is a fabric of rebellion, and it has long held appeal with those who consider themselves to be outsiders. This is historically because tartan was banned after the Jacobite Rebellion in Scotland in 1745 and anyone who wore it afterwards could face fines, or imprisonment.



Vivienne Westwood revived the use of tartan to create the anti-establishment punk movement and when in 1974 she and Malcolm McLaren opened their boutique SEX to cater to the burgeoning Punk rock scene, Westwood stocked the shop with every type of plaid imaginable.

What better patterned fabric to upholster a chair for Chateau Denmark than The Isle Mill Macleod fabric on the backrest and seat and half of the back, The Isle Mill Macnaughton on half the back and the band around the seat.

And for the extra punk touch: Samuel and Sons jumbo brush fringe centrally down the back in the style of a Mohican and spike studs running along the entire outer back. We eventually had to use rounded versions for safety but did test a few 'eye watering' spikes first.



HOTEL BROOKLYN, LEICESTER

# BROOKLYN BY NAME, BROOKLYN BY NATURE

**NEW YORK WAREHOUSE AESTHETIC MEETS  
LEICESTER'S SPORTING FAVOURITES TO PROVIDE  
A LEVEL PLAYING FIELD FOR GUESTS  
WITH ACCESS REQUIREMENTS**

INTERIORS  
SQUID.INC DESIGN



Is it a hotel? Is it a sports bar? It's both, but more accessible! The second Hotel Brooklyn is right on the doorstep of the Leicester Tigers rugby stadium. Like the sister site in Manchester, Brooklyn Lager, here's Brooklyn Lager, bleacher inspired tiered seating to watch big-screen sporting events and excellent interior design.

*The five floors reflect New York subway lines, while tigers and jungles feature throughout and there are several banana plants and a living wall. Designed with an eclectic nature-meets-industry aesthetic, the brown, green and grey colour scheme creates a stylish, warm atmosphere.*  
— Tanvi Vyas, *The Independent*

## SETTING A NEW ACCESSIBILITY GOLD STANDARD FOR UK HOSPITALITY

The hotel has raised the bar for accessibility standards and is the first hotel in the UK with fully accessible 'Liberty' suites. There are 10 Adapted Bedrooms, super wide lifts, special

assistance for guests with hearing impairments and the Hampson Suite which has its own electric hoist. The ceiling track has been designed to hoist guests from the bed into a mobile shower chair which can then access all areas of the bathroom.

Elsewhere in the hotel there is level access around the public areas and the furniture and soft furnishings were carefully chosen with all types of disability and impairments in mind.

Art and images including foxes and tigers imbibe the space with a local touch as they represent Leicester's big-hitting sports teams. The main restaurant and lounge area is aptly named The Lair, a fact boldly branded on the window in giant letters in a collegiate font. However, the space manages to avoid feeling like an out and out sports bar or a watering hole reserved for American lettermen.

The overarching interior aesthetic is New York warehouse; exposed brickwork, scaffold tables, industrial hanging lights, girders, concrete ceilings and metal mesh railings, but the accent lounge chairs

— in bright velvets, elevate the feel, so it sits just on the casual side of classy. It's this aspect of the design that transforms the space into the best kind of hotel sports bar hybrid imaginable. Standout fabrics that help pull this off include: Sunbury's Gego Bazaar 3512 & Bella Riot 3320.

Our exclusive Tribeca lounge chairs are a perfect fit for the industrial warehouse aesthetic, particularly when paired with scaffold board table tops with welded pipe tube legs. Elsewhere our teak flatbed trolleys are used as coffee tables in the hotel lounge, draper's shelving units and footwear benches provide storage and display solutions in keeping with the design and also help to divide the vast open space into different zones.



“““

**“ACCESSIBILITY HAS BEEN SEAMLESSLY AND AUTHENTICALLY WOVEN INTO THE FABRIC OF THE DESIGN AND THE RESULT IS POLISHED, QUIRKY AND INVITING. IT’S A CLASSIC AND STYLISH YOUNGER SISTER TO HOTEL BROOKLYN MCR, WITH ITS OWN UNIQUE SENSE OF STYLE, PROVING THAT THIS HOTEL AIMS TO BE NO PAPER TIGER.”**

— TANVI VYAS, THE INDEPENDENT

“““

**“THE HOTEL BROOKLYN BRAND HAS BAKED ACCESSIBILITY INTO ITS DNA, CREATING SETTINGS THAT ARE TRULY WELCOMING AND INCLUSIVE. HOTEL BROOKLYN IS A SHINING EXAMPLE OF HOW HOTELS CAN BE INCLUSIVE WITHOUT COMPROMISING ON DESIGN OR GUEST EXPERIENCE.”**

— EAMONN CROWE, EDITOR, BOUTIQUE HOTELIER, ON HOTEL BROOKLYN WINNING ACCESSIBILITY INNOVATOR OF THE YEAR 2022



## HEIMA

The Heima collection is made from solid wood, with rounded lines and delicate details. The Heima side chair features a solid beech frame which can be finished in a range of colours and upholstered in any fabric or leather.

Heima is available as a side chair, bar stool and lounge chair, with either a solid wood or cane back.

## BOMBOM

BomBom is a masterclass in contemporary comfort. Its form exudes softness, smoothness, and fluffiness, while the enveloping metal frame with four legs provides the chair with stability and elegance.

The BomBom lounge chair features a steel frame which is available in a range of finishes. The seat and back can be upholstered in any fabric or leather.



## MAKI

Slender and delicate shapes outline the silhouette of this contemporary collection. Designed by Adam Cornish, Maki invites you to sit and let yourself be enveloped by its sinuous lightness which is both recognisable and functional, as even the armchair is stackable 16 high.

Maki is available as a bar stool, side chair and armchair, all with or without arms (pictured below).



## NURA

Nura's simple lines create an elegant chair with a light and balanced design which fuses organic forms with contemporary style.

Nura is available as a side chair or bar stool, with or without metal arms as below. Nura comes in a solid beech frame which can be polished to a range of finishes but there is also the option of upholstering the seat pad in any fabric or leather.





## FLINK

A soft and futuristic stool, inspired by the stones found at the beach, which over time have been slowly polished and transformed into pebbles with rounded “friendly” shapes. For this reason, the stool is called Flink, a word that in Danish means “Friendly”.

Featuring a steel frame which is available in a number of finishes. The seat pad can be upholstered in any fabric or leather.

Also available as a low stool with a seat height of 480 mm.

## ROUND&ROUND

Round&Round is a contemporary stool composed of a delicate structure with four legs in painted steel. This version has an ingenious swivel mechanism allowing the seat to spin around the central axis, thanks to a refined and invisible technical solution.

The steel frame can be available in a number of finishes. The seat pad can be upholstered in any fabric or leather. Available with or without swivel seat mechanism.



## EVIE

The Evie armchair is an enveloping chair with comfortable curves at a great value price point. It features a solid beech frame which can be polished to any colour and upholstered in any fabric or leather.

Evie is available as an armchair or a lounge chair.



## ONDA

Onda is a contemporary side chair with clean lines, a soft form and a curious U-shaped metal back .

The Onda side chair features a powder coated steel frame which can be finished in a number of colours and upholstered in any fabric or leather. Onda is stackable 4 chairs high.



AVANTI



CAMILLA



FENDI



MILANO



MILANO 2



RADLEY



NUMO



NUMO



GLASGOW GOLF CLUB

# BAR FOR THE COURSE

WHEN FIRE RAVAGED A HISTORIC GOLF COURSE THE CLUB TOOK THE OPPORTUNITY TO MODERNISE AND REDESIGN WITH THE FUTURE IN MIND

INTERIOR DESIGN  
KIM PARTRIDGE INTERIORS

Killmont House is the clubhouse of the prestigious Glasgow Golf Club, the 9th oldest golf club in the world.

The listed building was built in the Georgian neo-classical style at the beginning of the 19th century and has been in use by the golf club since 1908.

In 2018 a devastating fire ripped through the clubhouse gutting 80 per cent of the building within hours. Fortunately, the external walls remained intact allowing the clubhouse to keep its historic appearance while an extensive renovation project could begin inside. The plan was to redesign the clubhouse interior with an eye to the future through major upgrades to facilities and a reconfiguration of the floor plans.

## INTERNAL FIRE-DAMAGE CREATED A BLANK CANVAS FOR MODERNISATION

Capitalising on the spectacular views of the first tee, a terrace with outdoor seating was added

front-of-house, while a three-storey modern extension was built to the rear of the building to accommodate a golf simulation room as well as improved and separate junior and female changing rooms after a recent vote for open membership. A courtyard was also added to the rear creating an impressive arrival to the clubhouse.

Throughout the venue, the look is contemporary but timeless and effortlessly classy. But then Kim Partridge Interiors specialises in creating timeless and elegant interiors and this kind of scheme is her signature look. The over-arching colour palette is blues, greys and regal purples. There are hanging globe lights as well as tabletop lamps, and glass coffee tables with golden frames which match the edging on the dining tables as well as the gold on the picture frames. This is elegance, but comfortably done, and the lasting impact is more a lounge area in a stately home than fine-dining restaurant. Sofas and rugs surround fireplaces and there are plants in every room. This is a space created to be a home from home as much as

a golf clubhouse.

The majority of the project required bespoke furniture and we worked with Kim Partridge Interiors to create a range of from conception through to prototype sign off to create pieces which fitted the interior aesthetic and served several practical needs.

For example the dining chairs needed to tuck neatly and tidily under the tables so required a lower arm height of 715 mm allowing the chairs to fit perfectly. Additional comfort was desired for longer dining as Glasgow Golf Club's social calendar features many extended dining events throughout the year. The solution was to upholster the chairs in extra comfortable memory foam with supple internal webbing.

We also manufactured sofas to a custom width and seat height to meet requirements and upholstered some of the side chairs in a split tartan fabric. This sounds like a simple customisation, but still requires a technical drawing and sign off so the pattern repeats exactly as desired.





GREENS, SALE

# SUCCULENT & SUSTAINABLE SALE

A VEGETARIAN RESTAURANT WITH A CALIFORNIAN AESTHETIC IN A BRUTALIST 60S SHOPPING CENTRE NOW REIMAGINED AS A FOODIE HEAVEN WITH SOME GREAT SUSTAINABLE SOURCING TOO

INTERIORS  
MARK MASON DESIGN

For over 30 years Greens has been blazing the trail for vegetarians in Manchester.

Simon Rimmer and Simon Connolly bought a restaurant on Lapwing Lane which has been proudly 'terrifying carnivores since 1990' and now they've opened a second restaurant in Sale so they can expand on this mantra.

## A BRUTALIST SHOPPING CENTRE TURNED FOODIE DESTINATION

The second restaurant is situated in Stanley Square where a brutalist 60s shopping centre has been fantastically reimagined as a food and drink paradise. The industrial ex-retail units are being populated with a host of stylish independents and small popular brands which offer everything

from family dining and oysters to tapas and hip fish and chips; Greens is right at home in this eclectic mix.

Designer Mark Mason has kept some of the industrial trappings of the site and augmented them with exposed brickwork and bare hanging light bulbs to great effect. On stripping back the ugly white ceiling tiles the team discovered the brutalist beauty of the original structure. The resulting ceiling has a raw earth patina and Simon jokes, "My mum and dad have just been in and you can see them desperate to ask

*'When you're going to finish it?'* Simon Rimmer speaking to Lucy Tomlinson, *Confidentials*

The walls aren't refinished, but instead painted a sun-bleached off-white. The metal finishes on the chair frames are Vintage White so they appear sand weathered and when

mixed with the pistachio, raspberry and blue colour palette all these elements collude to create a windswept Californian beach aesthetic.

Simon cites The Butcher's Daughter, an American plant-based restaurant, as an inspiration. His favourite outpost is in Venice Beach, and you can see the influence of that aesthetic here.

As well as the original brick and concrete, wood is an essential material in the design as well as the botanical touches you'd expect in a vegetarian restaurant. The stripped wood panelling and hanging ceiling plants which dangle in metal contraptions affectionately referred to as boats; both hint at beach-side surf shacks and sandy shrubs.





## SUSTAINABLE ETHOS FROM FABRIC TO TIMBER AND BEYOND

The owners made a conscious decision to use sustainable products throughout the restaurant where possible. The indoor restaurant tables we supplied are made from reclaimed teak and mango wood which is a fast-growing by-product of the fruit industry. Both table tops have a rustic patina and weathered finish which is surprisingly smooth to the touch and

fits the scheme perfectly but crucially is sustainably sourced. "We don't sell bottled water. We use filtered still and sparkling water from Belu, all of their profits go to water charities. We've got no fossil fuels - the kitchen is all induction. Even the paint on the artwork is biodegradable. We have many things that have been recycled around the place. So a lot of the wood



we used is recycled, all of the fabrics on all banquettes are recycled. The problem is when you say things that it sounds like you are virtue signalling, but we're a vegetarian restaurant so that's always been our ethos." Simon Rimmer, Confidentials



## CAPTIVATING WALL MURAL

The space is dominated by a mural by French street artist Nerone, known for his vibrant and colourful flowers. Simon says, "I discovered him because he was doing a community arts project where he painted the side of a load of old terraced houses where

my parents live on Merseyside. A friend of mine was working on the PR for the whole campaign, I said I was looking for an artist and he said you'll love it. So he [Nerone] came over from Paris, and I do love it." (Lucy Tomlinson - Confidentials)



## SUNBURY'S SUSTAINABLE FABRIC

The furniture is upholstered in sustainable fabrics from Sunbury's three new ranges:

### Zonda FR Recycled Weave

Woven using branded Repreve recycled polyester yarns produced from waste plastic, the textural weave is accentuated by a contemporary palette including subtle, earthy tones as well as strong, robust colours.

### Sorsdal FR Recycled Velvet

Sorsdal is woven using 100% Repreve recycled polyester yarns which are produced from waste plastics. This high-performance, durable velvet has an everyday, modern, cool style and soft-to-the-touch texture, while a subtle sheen gives depth and richness to the comprehensive range of colours.

### Cascade By Amelia Graham, Recycled Digital Print

Another geometric masterpiece, Cascade has a clean, crisp aesthetic and is a distinctive, bold design ready to make a statement. Cascade is printed on a Repreve base cloth, made from 100% recycled plastic.



## STUNNING ROOF TERRACE

Making the most of the roof terrace space, the Californian beach shack style continues outside with a wooden rush-effect shelter structure.

The outdoor wooden chairs and bar stools are again distressed but this time in a Vintage Blue, brightening the space with an infusion of sky blue, on even the greyest of Greater Manchester days.

Following the recycled ethos - there are several statement pieces outside - in the form of reclaimed park benches, and for the final beach touch - Hanover stackable armchairs with a woven basket-style frame.



INN COLLECTION

# INN GOOD COMPANY

THE INN COLLECTION GROUP HAS AN EVER-EXPANDING PORTFOLIO OF IMPRESSIVE PUBS WITH ROOMS ACROSS THE NORTH WE LOOK INSIDE THREE RECENT REFURBS: THE NORTHALLERTON, THE SEABURN AND THE HOG'S HEAD INN.

CLIENT  
INN COLLECTION GROUP

INTERIOR DESIGN  
NORTHALLERTON INN: DESIGN NORTH  
HOG'S HEAD INN: BXB INTERIORS  
SEABURN INN: BXB INTERIORS

The Northallerton Inn is a historic Georgian building that's swapped handcuffs for pint glasses.

Once the police station of this lively market town, this atmospheric Georgian building has been reinvented as a cosy country pub with rooms in the centre of Northallerton. Where a custody suite with cells once stood, now sits a family-friendly restaurant and bar where good food and drinks are served in a relaxed setting. A far cry from the bare and unwelcoming walls of police custody!

## ECLECTIC BENTWOOD FURNITURE AND A COMBINATION OF TABLE TOPS INCLUDING FAUX METAL LAMINATE

The restaurant and bar at the Northallerton Inn is an intriguing mix of traditional bentwood and stick back pub classics like Fan Back, Grace Armchair, Windsor Stick Back, Helen Armchair fused with some contemporary choices. The mid-century styled Wave Side Chair, pairs perfectly with the angular Camborne Side Chair pictured here.

Tables specified range from the traditional solid oak tops stained walnut in a number of shapes and sizes, to the unusual - metal laminate tops (pictured right). These impressive metal-looking table tops are actually made from Egger's Ferro Bronze laminate. Ferro Bronze is Egger's version of a weathered iron plate; the colour mix of copper-bronze provides a realistic metal character that is strengthened by the irregular decor structure. It works well with

sand-coloured woodgrain decors. The matt and glossy elements of the texture ST87 Mineral Ceramic adds to its authenticity. We paired the laminate top with a copper PVC edge and fixed them to Liberty Table Bases for a sophisticated table that is easy to clean and won't patina over time unlike genuine metal tops which oxidise and react when exposed to air and liquids.

## PANAZ'S REMAKE: BOTANICAL FABRICS THAT ARE BLOOMING MARVELLOUS

Botanical fabrics on Repton side chairs add a splash of colour amidst

the wooden hues of the bentwood and stick back chairs and blend harmoniously with the botanical curtains and floral feature walls.

The botanical prints were custom-made by Design North, especially for the project, using Panaz's ReMake design technology. ReMake gives designers the ability to recolour and rework any Panaz print design. The design can then be printed onto a wide range of basecloths to suit whatever end use is required, from curtains and cushion covers to bedding and blinds.





## TRADITIONALLY STYLED INNS WITH CONTEMPORARY COMFORT

Inn Collection don't just do excellent pubs, they also do the extremely comfortable rooms above them and we have supplied a number of different chairs for these bedrooms. For the Northallerton we supplied the brilliant boxy and button-back Kennon armchairs specified in Panaz Vintage, an extremely hardwearing

faux leather with a subtle grain texture that is roughly 6 times more durable than standard commercial grade fabrics. The small footprint and compact form of these chairs make them perfect for hotel bedrooms. In The Hog's Head Inn we specified both the Soho armchair and Voip side chair with split fabric - most notably Lewis

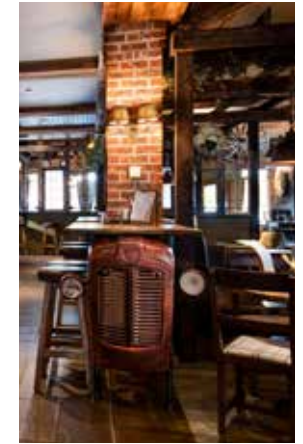
& Wood's botanical Alhambra Vedure. All the Inn Collection rooms are contemporary with a touch of country manor chic creating the perfect base for guests to explore what lies beyond, be it a historic castle, bracing seafront or one of the North's many moors and dales.



## THE SEABURN INN: NAUTICAL CHARM IN THE CITY-BY-THE-SEA

Set right on the seafront, rubbing shoulders with the vibrant coastal resort of Roker with its famous pier and Whitburn in South Tyneside, The Seaburn Inn is a traditional-styled pub on Sunderland's seafront with a hint of seafaring mischief. The classic cross-back chairs with iron metal back are the dominant seating option in the Seaburn's pub and restaurant. We hold a good stock of

these popular restaurant and cafe frames and can upholster for a quick turnaround and shorter lead time than most companies that order bentwood directly from Europe. We're also able to apply frame finishes in-house so if you want something a little bit different just ask and we can discuss what's possible within your timeframe.



## HOG'S HEAD INN: A PUB FOR MUGGLES AND MORE

A silver award-winner in the North East England Tourism Awards, The Hog's Head Inn in Alnwick is named after the tavern in the Harry Potter books and films. As befits a pub with this name, you'll also spot a sow or two framed on the walls and perhaps a dog or two on the floor - the pub welcomes muddy paws as well as hiking boots and bicycle wheels with heaps of hearth warming rustic charm.

### BESPOKE TRACTOR TABLES - A UNIQUE CONVERSATION PIECE

We were tasked by the design team at BXB to source a specific tractor table online, however this proved to be a discontinued and unavailable product, so we had to get creative! We sourced new tractor fronts and our in house finishing team distressed this through various processes - to

provide an aged, weathered look. Our Metalwork team then manufactured a scaffold frame to suit, which gives us the aged tractor front table. Get in touch with your inspiration images if you'd like us to come up with a similar solution for something you've seen online. With cosy patterned carpet on the floors, hops hanging from exposed beams and dark stained traditional wooden furniture like the pub classic Camacha side chair, this is a traditional pub with an extra helping of country comfort. The floral fabrics and wallpapers add a touch of arts and

crafts class and feature patterned designs from Lewis & Wood and Morris & Co. Throughout the pub, we supplied a classic selection of pub tables as well as antique grey tables with a sand blasted aged finish timber top. These are part of our Farmhouse collection of rustic furniture which is popular in food hall cafes as well as traditional pubs. In The Hog's Head the Farmhouse Tables pair exceptionally well with exposed brick walls and country kitchen nick-nack shelves.





## PASSO TABLE BASES

Introducing the Passo Poseur table base in cast iron with a grey vintage finish. Featuring a stepped base and footrail; entirely exclusive to Andy Thornton.

Also available in standard dining height and large for extra big table tops.



## MORGAN

Soft vintage tan leather chair with tapered legs in gun metal finish. Morgan is inspired by classic racing cars from the '50s and '60s, the frame features the iconic hooped back and striped stitching and evoked memories of Mille Miglia or Le Mans races in their heyday.



## RAJASTHAN MARBLE TOPS

Excellent value marble table tops in black, white and green from Rajasthan, India, which are all offered at a lower price point than the cheapest Carrara Italian marble alternative. All available in round, rectangular or square in a choice of sizes with a round edge profile as standard.



## PATISSERIE COUNTERS

Our take on a vintage patisserie counter, hand crafted in teak with glazed sides and white marble top. This new collection is inspired by original pieces we have had in our antique stocks.

They made great counters and serving units for coffee shops and delicatessens etc.

Look out for more pieces in the future as we develop the range.



# WAITER STATION TIPS AND IDEAS

Restaurant waiter stations play an essential part in increasing restaurant efficiency as they help save time and make life easier for your staff. Having a well-maintained, fully stocked restaurant waiter station will lead to improved customer service and in turn increased customer satisfaction. Having the right number of these units and placing them correctly will lead to an efficiently run, smooth-flowing restaurant design which can lead to happier employees which in turn will improve staff retention.

## WHAT IS A WAITER STATION AND WHAT ARE THE BENEFITS OF THEM?

A waiter station is a storage space for the items a waitress, waiter, or food server requires to do their job. Server stations are like a waiter's headquarters where they can organize items, hide away clutter, and find supplies easily. They allow the kitchen to run smoothly and assist in an effective backup for quickly resetting

tables during periods of peak demand. Crucially they also save time travelling longer distances to fetch requested items and prevent congestion in busy thoroughfares such as the route to the servery hatch or kitchen.

They can also prevent crockery and glassware from breaking as they provide protective storage, and can even function as zone dividers.

Tip: Higher-end restaurants will often request soft-close drawers - particularly for cutlery to minimise any noise.

## WHAT CAN BE STORED IN A WAITER STATION?

A waiter station can hold a number of essential table items and supplies to assist in swift table service and decrease turnaround time, reducing bill payment waits and clearing and laying table time between customers.

- Clean crockery, cutlery and glassware
- Menu and wine list
- Water pitcher
- Serving trays

- Bill folder
- Fresh linen - tablecloths, serviettes etc
- Sugar, salt, and pepper holders
- ePOS systems
- Card payment machines and their docks

Tip: If you are going to house an ePOS system you'll need to consider cable access and potentially even vents for the electronic system.

## WHAT'S THE DIFFERENCE BETWEEN A WAITER STATION AND A HOST STATION?

Host stations are places where hosts, hostesses, and head waiters are stationed to welcome customers, look into reservations, and check if there are any empty seats available. They can also be called welcome desks and have a similar function to reception desks in hotels. But a host station is essentially a waiter station, with less storage, so if you pair it with shelving, it'll become a waiter station!

## HOW MANY WAITER STATIONS DO YOU NEED PER RESTAURANT?

Some space planning sources suggest you'll require one waiter station for every 22 seats. But the best way to work it out is by looking at the zones which your staff will service and think of the set number of tables your waiter will be in charge of, taking orders and fetching the bill.

Megan's restaurants are medium sized. They usually purchase 3-4 waiter stations and host stations per site. They're also geared up for all day dining so there will be one waiter station for each zone eg. the main dining area including the booths, the lounge area, and the outdoor area.

## WHAT'S THE IDEAL SIZE OF WAITER STATION?

Our waiter stations come in a range of sizes and to think about which is best you need to start considering what items will be required by every station. Some restaurants prefer to keep the cutlery in the kitchen where they will be washed and dried, others in their

waiter station to reduce walking time between the tables and the kitchen. This is going to be more important in larger restaurants with longer distances to cover, but if you're going to have cutlery in them, you'll need a larger sized unit too.

A larger size will also help to accommodate the peak periods with extended storage space. But that might lead to increased waiter traffic in a particular area which can cause inconvenience to guests sitting near the station. So if you're a small restaurant with a busy turnover you may need more small units rather than one or two large ones.

Beckworth Emporium is a large restaurant space with many zones. They have bespoke waiter stations paired with water stations essentially doubling the unit size of what Megan's use.

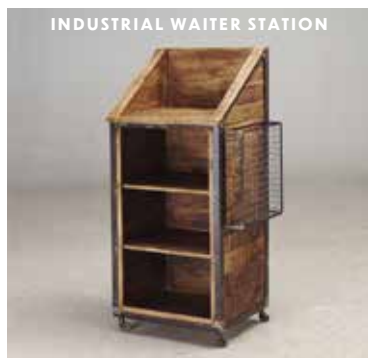
## WHERE SHOULD YOU PLACE A WAITER STATION?

Primarily, the waiter's location depends on the traffic patterns and connections with the kitchen and tables. Ideally, they must be close to dining areas but should be kept out

of public view to the fullest extent. It should also be ensured that there is an adequate number of stations so that a single area doesn't get overcrowded by waiters running back and forth. (No one wants to fight over a card reader.)

Usually, there is a host station near the entrance where menus can be given and guests checked in or have table availability checked upon arrival, then one or two others throughout the restaurant to service particular sections. Condiments, menus and cutlery can be unsightly so some people opt to place waiter stations slightly out of sight near kitchen entrances or restrooms to stop them from interfering with the customers' overall ambient experiences. Rather than hide waiter stations, some designers choose to make them a feature of the interior.

People often specify our antique counters and cabinets we stock to make an impressive and impactful design statement of these necessary items. We can refinish them to match other furniture in the space and pair them with shelving for additional storage. *Visit our website for more furniture tips.*





## VINTAGE TAILOR'S WORKTABLE

French table dating to the early 1900's – from an old tailor's shop. Complete with a lovely patina and original marks from the tailor's iron used over the decades.

Please check the antique section of our website for a collection of original work and factory tables - we are always adding new stock.



## LIVERPOOL STOCK EXCHANGE OVERMANTEL

The Liverpool Stock Exchange opened in Dale Street in 1879 until it moved to Silkhouse Court in 1971. We acquired the overmantel as part of the refurbishment of the Dale Street property and it has remained in our archived stock until now. It is thought it dates from the early 1900's and was installed in a main meeting room as part of an ongoing upgrading of the premises. It would provide a perfect centre piece for a hotel or restaurant back bar fitting



## ANTIQUE WALNUT BOOKCASE

Monumental Edwardian bookcase with burr walnut frontage and integral desk, from a gentleman's residence in Bradford, and if you need some books to go in it our buying team have been busy and were thrilled to be offered a private library of books. After a day of heavy lifting we now have these boxed and ready to ship in our warehouse. Many date to the late 1800's and we have over 100 metres of stock, for sale by the metre. A one off collection that would add a touch of elegance to your interior shelving.



# CARDEN PARK KEEPING UP A-PIER-ANCES

FROM VICTORIAN PIER TO LUXURY  
CHESTER SPA HOTEL: CARDEN PARK'S  
UPGRADED WEDDING GAZEBO PRESERVES  
BRITAIN'S ARCHITECTURAL HERITAGE



An impressive gazebo upgrade fitting of a world-class spa hotel. Carden Park is a luxury hotel in Cheshire with a 1000-acre estate and a world-class spa.

Our architectural metalwork department was tasked with constructing a wedding gazebo and create a more fitting complement to the striking sculpture garden that surrounds the space.

The newly improved structure with a majestic cupola now offers guests an upgraded outdoor area for winter while simultaneously adding to the hotel's historic charm. As weddings are a big part of their offering the gazebo will also provide a centrepiece for couples to take their vows surrounded by the picturesque backdrop of the stunning Cheshire countryside.

But what couples saying 'I do' won't realise is that they're surrounded by another bit of history. The panels that make up the gazebo are copies of Victorian designs reproduced from Morecambe Pier.

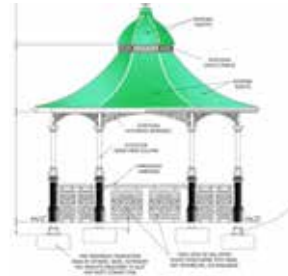
Preserving the past to delight the present: manufacturing the gazebo using Victorian designs from Morecambe Pier

In 1978 the panels which make up a large part of this gazebo were salvaged from Morecambe Pier after a fire destroyed the structure. The cast-iron sections from the railings that survived were lowered down into rowing boats and taken back to the shoreside because the fire had devastated the central part of the pier and that was the only way to access them.

The Andy Thornton team of craftsmen then made a copy of the panels so they could be reproduced

and the Victorian craftsmanship preserved. The originals were sold and went on to surround a car park in Las Vegas but because we preserved the original designs, the panels can be seen around the world, from St Stephen's Green Centre in Dublin to Heide Park theme park in Germany, which incidentally also has the same columns as the Carden Park gazebo.

It's a great example of how architectural salvage and reproduction have preserved Britain's architectural heritage for generations to come.



# ANDY THORNTON

EXPERIENCE | CHOICE | SUPPORT

Nº. 3

## WORK SHOP

WINTER · 2022

Andy Thornton Ltd  
Rosemount, Huddersfield Road, Elland, West Yorkshire, HX5 0EE  
Tel: 01422 376000 Email: [sales@andythornton.com](mailto:sales@andythornton.com)  
[andythornton.com](http://andythornton.com)