



VESCENT

THE COLLECTION





V E S C E N T

T H E C O L L E C T I O N

**ECLECTIC ENERGY
INSPIRED DESIGN**

**Vescent is the eclectic
new contract stock
collection from
Ulster Carpets designed
exclusively to meet
the varied demands
of the international
hospitality industry.**



VAPOR

CALX

Nexus

arbor

L I / E A

NEBULA

THE COLLECTION

Featuring contemporary designs in a range of on trend colours Vescent is guaranteed to complement any commercial setting. This collection is available in 4m width and woven in 9 row axminster quality – 80% wool / 20% nylon, making it suitable for use in a wide range of busy contract applications.

The neutral colours used throughout the collection tie in with modern fabric and wallpaper collections while the experimental colours add a flash of colour for those seeking something different.

Linea, Arbor and Nexus are structured designs while Calx, Vapor and Nebula are more organic. **Vescent is available from stock and with no minimum order.**





VAPOR



V E S C E N T

EBONY
156352-1



HAAR
153443-1



VAPOR

Vapor features two colourways. This design sees pattern layered over pattern with organic textures similar to a mist or cloud revealing an underlying geometric herringbone pattern. Vapor's neutral colour palette helps to create depth within this design.

The image shows a close-up view of an office environment. In the foreground and middle ground, there are several office chairs with a textured, olive-green fabric upholstery and chrome frames. The chairs are positioned on a carpet with a complex, multi-colored pattern in shades of blue, grey, and beige. In the background, there is a wall with light-colored wood-grain paneling. A white rectangular box is overlaid on the carpet, containing the word "CALX" in a bold, black, sans-serif font. The letters are filled with a pattern that matches the carpet's design.

CALX



V E S C E N T

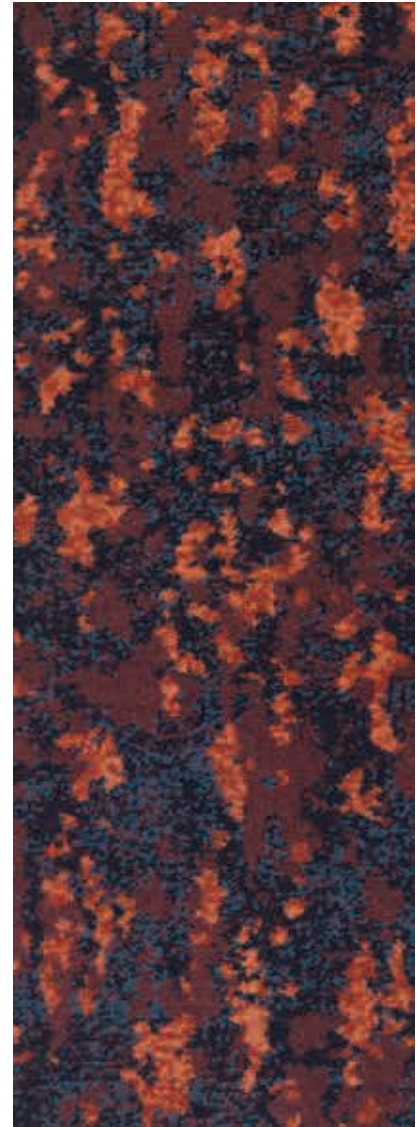
ALUMINA
147144-7



MINERAL
147144-3



OXIDE
155146-1



Calx is an organic design which includes three colourways – two with neutral tones reminiscent of lichen and one with bold oxide red and deep blue tones similar to lava.

Nexus



V E S C E N T

CHROMA
151781-1



PEWTER
151906-1



ONYX
149736-1



Nexus

Nexus features a beautifully structured design similar to fretwork. Very soft neutral tones and lots of layers add to its contemporary distressed look.

VESCENT

THE COLLECTION



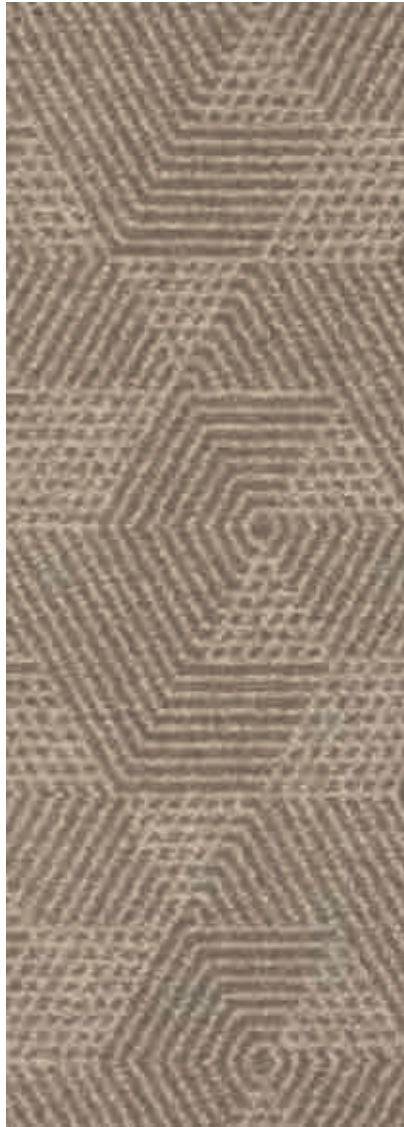
A dark red sphere is positioned on the left side of the frame, resting on a floor with a repeating geometric pattern. The background is a wall of rough, textured bricks. The word "arbor" is centered in the lower half of the image in a white, lowercase, sans-serif font. The letter 'b' is stylized with a hexagonal cutout in its center.

arbor

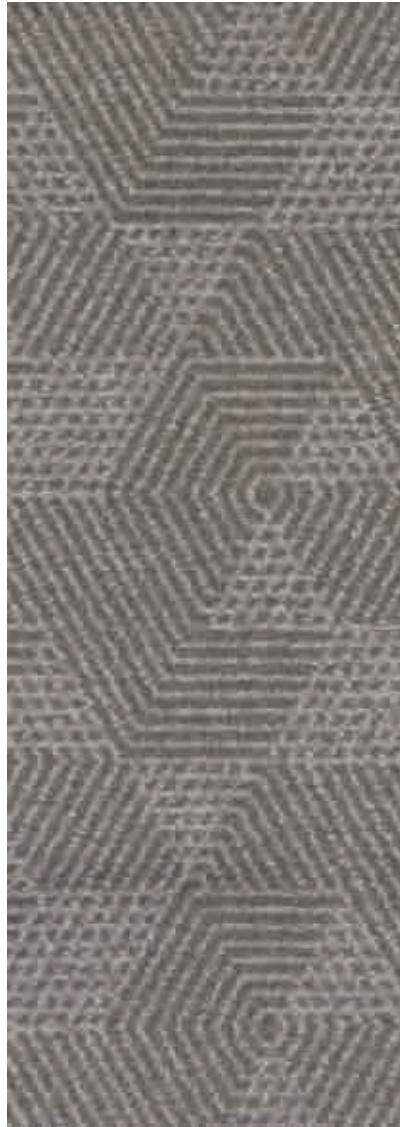


V E S C E N T

ELIXIR
149693-5



ALLOY
149693-6



OBI
155293-1



arbor

Arbor is a strong symmetrical design featuring a series of hexagons and is available in three colourways.
With a distressed texture this design gives a contemporary twist to the art deco look.

T H E C O L L E C T I O N



L I V E A



V E S C E N T

ZINC

153391-10



CITRINE

153391-9



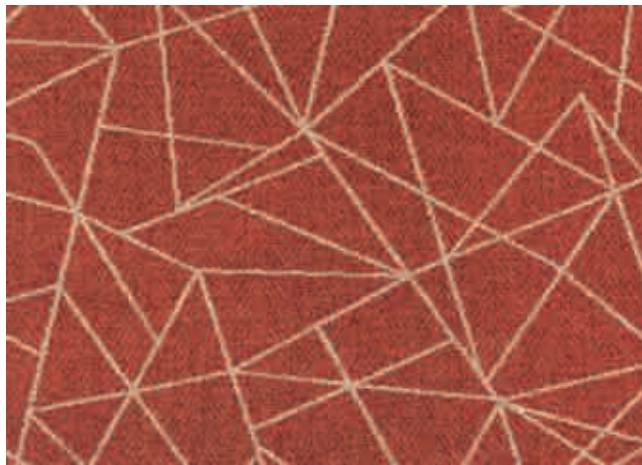
IGNIS

153391-1



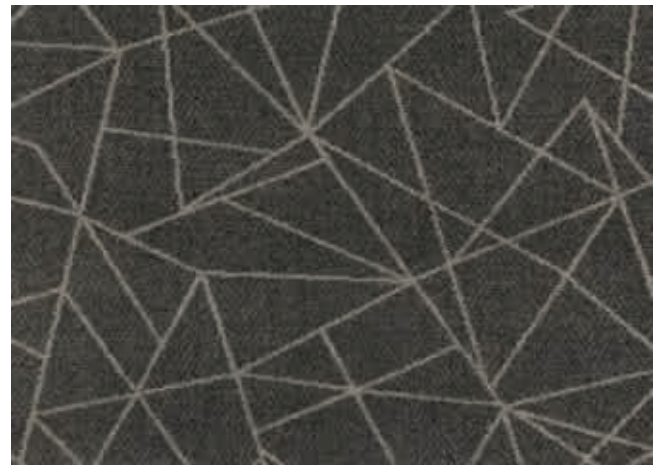
CADMIUM

153391-8



QUARTZ

153391-5



L I ~~| /~~ E A

This design sees fragmented shapes sitting on top of a smart herringbone base layer. Clean sharp lines interlink creating a multi directional pattern featuring a statement colour which is distinct from the background. Linea Cadmium features a strong warm red background colour in contrast to the four other more neutral colourways.

VESCENT

THE COLLECTION





V E S C E N T

MICA

147178-13



OCHRE

147178-12



ZAFFRE

147178-16



SALT

147178-18



ASPHALT

147178-8



NEBULA

Nebula is a subtle design with a soft texture in five colourways giving maximum coverage in areas where attention is drawn towards statement pieces.

T H E C O L L E C T I O N

ECLECTIC ENERGY INSPIRED DESIGN

S P E C I F I C A T I O N I N F O R M A T I O N

E N G L I S H

Suitability

Heavy Contract,
Extra Heavy Domestic

Pile Yarn

80% Wool (mothproofed)
20% Nylon

Backing Yarn

Polypropylene

Width available

4,00m (13'1")

Pile Height

6,35mm (0.25")

Pitch

27,56 per dm, 7 per inch

Rows

35,43 per dm, 9 per inch

Total Pile Weight

1255g/m2 (37.02 oz/yd2) +/-10%

Please note:

Carpet should be professionally laid according to BS 5325 ISO13746: 2000 using good quality underlay.

F R E N C H

Qualité

Usage commercial intensif,
Usage domestique très intensif

Composition du Fil

80% Laine (traité à l'antimite)
20% Nylon

Support dossier

Polypropylène

Largeur disponible

4,00m

Hauteur de velours

6,35mm au-dessus du dossier

Serrage chaîne

27,56 par 10cm

Serrage trame

35,43 par 10cm, serrage 9"

Poids total de velours

1255 g/m2 +/-10%

A noter:

Toute moquette doit être posée selon la norme BS 5325 ISO 13746: 2000 en utilisant une thibaude de bonne qualité.

G E R M A N

Qualität

Starke Nutzung im Objektbereich,
Sehr starke Nutzung im Privatbereich

Polzusammensetzung

80% Schurwolle (Mottenschutz-Behandlung)
20% Nylon

Rückenmaterial

Polypropylene

Lieferbreite

4,00m

Polhöhe

6,35mm

Kettdichte

27,56 pro 10cm

Schussdichte

35,43 pro 10cm, 9 Schuss

Poleinsatzgewicht

1255 g/m2 +/-10%

Bemerkung:

Teppichboden sollte gemäß BS 5325 ISO 13746: 2000 mit einer qualitativ hochwertigen Teppich-Unterlage verlegt werden.



arbor



L I N E A



NEBULA



VAPOR



CALX



Nexus

Design Name Référence du dessin Designname	Design Number Référence du dessin Designnummer	Colourway Coloris Farbnummer	Repeat Raccord Rapport	Length x width Longueur x largeur Länge x Breite
Arbor	149693-6 149693-5 155293-1	Alloy Elixir Obi	90.4cm x 100cm Straight Match / Raccord droit / Seite an Seite (35.6" x 39.4" Straight Match / Raccord droit / Seite an Seite)	
Linea	153391-8 153391-9 153391-1 153391-5 153391-10	Cadmium Citrine Ignis Quartz Zinc	99.8cm x 200cm Straight Match / Raccord droit / Seite an Seite (39.3" x 78.8" Straight Match / Raccord droit / Seite an Seite)	
Nebula	147178-8 147178-13 147178-12 147178-18 147178-16	Asphalt Mica Ochre Salt Zaffre	100.1cm x 100cm Half Drop / Raccord sauté / halb versetzt (39.6" x 39.4" Half Drop / Raccord sauté / halb versetzt)	
Vapor	156352-1 153443-1	Ebony Haar	99.3cm x 200cm Straight Match / Raccord droit / Seite an Seite (39.1" x 78.8" Straight Match / Raccord droit / Seite an Seite)	
Calx	147144-7 147144-3 155146-1	Alumina Mineral Oxide	100.1cm x 100cm Half Drop / Raccord sauté / halb versetzt (39.6" x 39.4" Half Drop / Raccord sauté / halb versetzt)	
Nexus	151781-1 149736-1 151906-1	Chroma Onyx Pewter	99.8cm x 200cm Straight Match / Raccord droit / Seite an Seite (39.3" x 78.8" Straight Match / Raccord droit / Seite an Seite)	

Whilst every effort is made to achieve accurate colour reproduction of products in this brochure, printing limitations can be misleading. Selection of products should be made from actual samples.