



Shweta Mistry

Exclusive Wallpapers and Fabrics





Shweta Mistry is a women led design studio based in Glasgow founded in 2018; by Shweta, creating exclusive fabrics, wallpapers and interior accessories. Designs are created from hand painted artwork using rare pigments with global historic significance and heritage painting techniques. Cutting edge digital technologies are used to transform the artworks into exclusive products. All our wallpapers and fabrics are Made in the UK to the highest quality specifications catering for individual clients as well as high end interior designers and boutique hoteliers. The studio also creates bespoke designs for commercial and residential projects. Our principals of exclusive designs, quality and integrity are key into every creation.

We are excited to share our fabric brochure and give an insight into the brand Shweta Mistry and share our exclusive fabrics with you.





What we do

We bring inspirational design edge to traditional painting methods and techniques. Our elaborate exclusive designs are created to enhance the everyday with pattern, texture and colour through a sensorial experience no matter what your style is. Equally believed to create a timeless interiors exploring what imagination can bring to surfaces that surround us.

Who we are

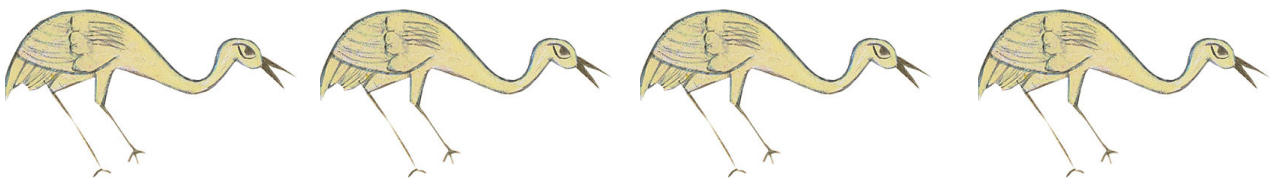
Shweta, is the founder and director to the design led studio. Her mission is to invigorate forgotten arts for future generations through her created designs. Her vision is brought to life working alongside closely with the manufacturers who are known industry leaders and family run businesses based in the UK. She has exhibited in national and international trade shows including Maison et Objet, Paris. We intend in creating exclusive fabrics and wallpapers with relentless forward thinking creativity. Everything we do comes from deep study of Indian miniature painting techniques of the past and our mission is to extend that tradition through our designs in a new light.

Sustainability

All our fabrics are made and printed in the UK they are all 100% natural fabrics. We only print to order so only print what we sell we do not hold any stocks. We are conscious of the environment and re-use all our packaging materials and try and run a paperless business.

Inclusion

Our design studio is aware of the upstream journey of embracing diversity, equity and inclusion in the design industry. We are looking to contribute , learn and set an example by starting the conversation.





Fabrics available by the metre and interior accessories made to order.

Right: Hedgegrow Rosa fabric in Indigo Blue
 Left: Confetti Leaves fabric lampshade and Sample book with Enchanted large scale wallpaper in the background.



Enchanted large scale fabric detail in Midnight Blue



Every space is a blank canvas, fill it with colour, pattern and texture that add soul to your surroundings.



Featuring Leaves fabric



SKU: FAB0002



SKU: FAB0001



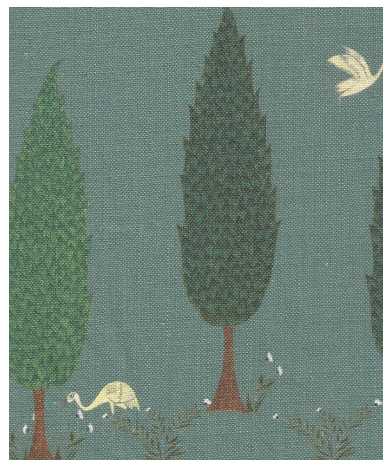
SKU: FAB0021



SKU: FAB0020S



SKU: FAB0019



SKU: FAB0018S



SKU: FAB0008



SKU: FAB0009



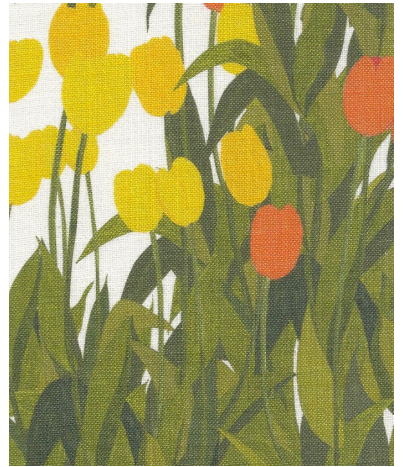
SKU: FAB0010S



SKU: FAB0007



SKU: FAB0006



SKU: FAB0005



SKU: FAB0011S



SKU: FAB0013S



SKU: FAB0012S



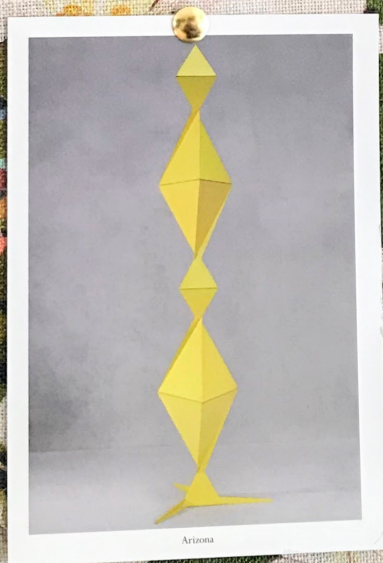
SKU: FAB0014

Sample books and samples are available. Please reach out at shweta@shwetamistry.com or call +447939142227.

 @shwetamistrydesigns



Lilies



Arizona



Shweta Mistry

Exclusive Wallpapers and Fabrics

Designed and Made in the UK

www.shwetamistry.com