

ms. q. 1011

Contents

Our Story	2
The Morgan Team	4
Made in Britain	7
Environmental	7
Design Process	10
Designers	11
Morgan London	15
Events & Collaborations	16
Case Studies	92
Product Library	118
Banquette	132
Bespoke	133
Finishes	134
Product Dimensions	138
Contact	156

Collections

Atlantic	22	Lucca	46	Porto	68
Boston	24	Manhattan	48	Rakino	70
Brompton	26	Metro	50	Ribb	74
Chelsea	28	Miami	52	Rio	76
Chevy	30	Modena	54	Rotunda	78
City	32	Opera	56	Seville	80
Goodwood	34	Oslo	58	Siena	82
Hampton	38	Panama	60	Soho	84
Havana	40	Paris	62	Valencia	86
Kyoto	42	Pastille	64	Verona	88
Lima	44	Pimlico	66		

Our Story

Morgan is a wholly British business, designing and manufacturing seating and tables for the contract market, from its dedicated factory in Hampshire. We design and produce contemporary collections with a passionate commitment to invest in every product and collection with a signature level of originality and dedication. We start with trees and finish with beautifully crafted furniture.

Established over 70 years ago, Morgan has been owned and run by Rodney and Katerina for over 25 years, who, whilst nurturing the company's heritage of British craftsmanship, have succeeded in maintaining their original objectives; to offer design led and customer focused service and provide an outstanding quality of product.

To be a generous host is to give a warm welcome, providing comfort and luxury; we believe in these core hospitality values and know they are important to our customers, whether specifying for workplace, hotel, cruise, leisure or healthcare environments.



The Morgan Team

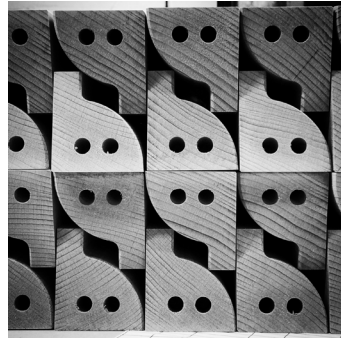
Morgan is managed in a collaborative style, driven by a strong creative leadership team. As a design-led business, creativity permeates through every aspect of the business.



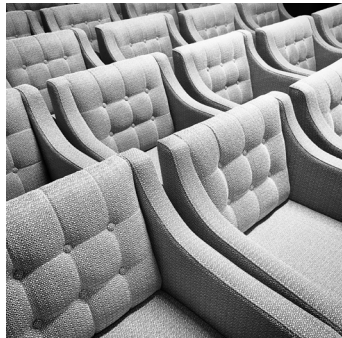
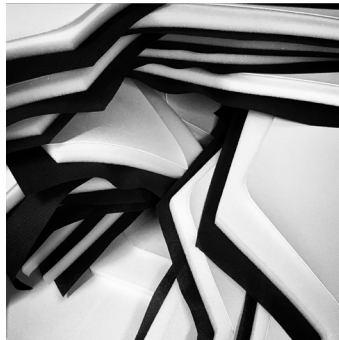
Rodney McMahon, our Managing Director, is a Chartered Accountant, with a passion for design, and has brought processes and disciplines to our production and administrative procedures that underpin our commitment to our clients. A passionate believer in good design and a key influencer of British furniture associations and charities.

Katerina Zachariades, our Design Director, originally trained as an architect before training as a furniture designer at the Royal College of Art. Katerina's creative vision and energy has driven the company's design collections, whilst always reflecting the values of purity and integrity with an in-depth understanding of timber craftsmanship.





FROM
TREES TO
CHAIRS



Made in Britain

Morgan is a passionate exponent of lean manufacture and, through its actions, clearly demonstrates how this approach delivers mutual benefits for company and customer, resulting in improved lead times and even higher quality of product and service to the customer. Traditional furniture making skills are combined with CAD CAM technology to achieve the best manufacturing results.



Environmental

At Morgan, we are concerned with sustainability and the environmental impact of our activities, as well as our social responsibility to the community. We source our timber from European sustainable estates that are given PEFC/FSC certification or are EUTR compliant. We are also accredited in ISO14001 for Environmental Management Systems.

We strive to reduce waste; all our wood waste heats the factory and offices, foam waste is recycled by specialists, and all fabric waste is donated to charities. We are involved with local schools, colleges and universities nationally and invest in education and local charities. We offer a continuous programme of apprenticeships in all departments.



Design Process

The designers of Morgan Studio, and director Katerina Zachariades enjoy collaboration and believe a group achieves more than an individual, creating original furniture collections that represent our commitment to originality and quality.

We have expanded our team by collaborating with external designers that offer a unique perspective to our process.



“We specialise in designing furniture for the hospitality, workplace, cruise and healthcare sectors. Increasingly the distinction between these sectors is blurred, with a common thread of simplicity, comfort and eclectic style.

Today, both workplace and hospitality include work, meeting and relaxation areas to different degrees. Our furniture collections aim to reflect this trend, offering elegant solutions for the modern interior.”

Katerina Zachariades, Design Director

Designers



Mehran Gharleghi

Mehran is the founder of London based Studio Integrate, an architecture, design and research studio. He studied Architecture and Design with Emerging technologies at the Architectural Association. He has also taught at The Architectural Association and The University of Brighton.

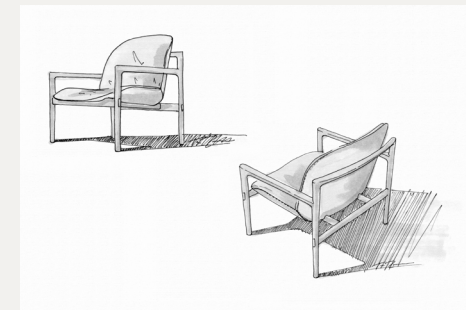
Designer of our 3D printed Rio collection.



Tim Rundle

Tim runs his own design studio in London specialising in interior products, mainly lighting and furniture. He studied Industrial design at Victoria University of Wellington, NZ. Alongside his studio, Tim runs Platform 23 - Design for Manufacture, on the Masters program at the Royal College of Art.

Designer of our Rakino lounge collection.



“My relationship with the Morgan team began very positively a few years ago. It got better and better over time and now we consider each other as one extended team and have established a seamless collaboration method. Our working process is very enjoyable, which I believe is crucially important when creating ambitious and high risk projects and products.”

Mehran Gharleghi, Designer





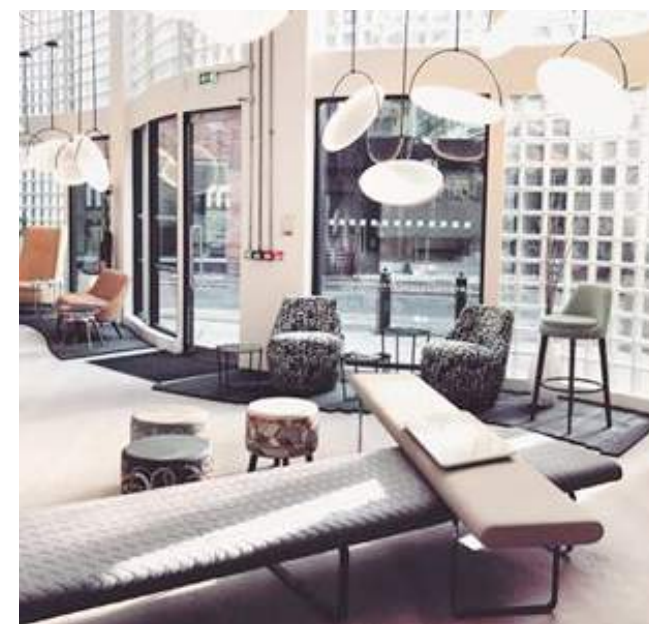
Morgan London

Morgan London is a celebration of independent British artists and designers across disciplines.

Our Design Director Katerina and Managing Director Rodney, believe that Britain is at the forefront of the art and design movement. Their passion for high quality design and inspiring art, led to the creation of Morgan London, an initiative with which to promote this talent through a series of installations, exhibitions and events, at our Clerkenwell showroom.

“It has always been a pleasure to work with the Morgan team. I feel very lucky to have been invited into their creative community. The invitation to create work for their space has encouraged and fuelled my practice hugely. I am incredibly grateful for the trust and freedom they have invested in me and my artwork.”

David Shillinglaw, Artist





Events & Collaborations

At the heart of Clerkenwell, Morgan London is a unique double height gallery space which lends itself perfectly to exhibitions, seminars and film screenings, all in the midst of our beautifully crafted furniture. As furniture designers, we are constantly striving for the perfect balance of form and function.

During our first five years in London we have collaborated with a number of design led companies and hosted a number of events. Some of these are now regular features in our calendar to attract and inspire our friends and customers.



Expanded Eye, Artists

2014 – 2019

Collaborative thanks to:

Andrew MacGregor
 Charles Leon
 Chris Eckersley
 Craft Central
 David Shillinglaw
 Double Decker
 Expanded Eye
 FIRA
 FX Magazine
 Ivo Graham
 Kvadrat
 Mark McClure
 Mehran Gharleghi
 Michael Townsend Williams
 MIX Magazine
 RCA
 Remi Rough
 Satellite Architects
 Stage One
 Tate Hindle

Lighting thanks to:

Another Studio
 ByLUUM
 Chelson
 Curiousa & Curiousa
 Daniel Schofield
 Decode London
 Delta Light
 Haberdashery
 Hand&Eye Studio
 Innermost
 Rothschild & Bickers
 Studio Warm
 Tom Raffield
 Tom Dixon
 Vitamin



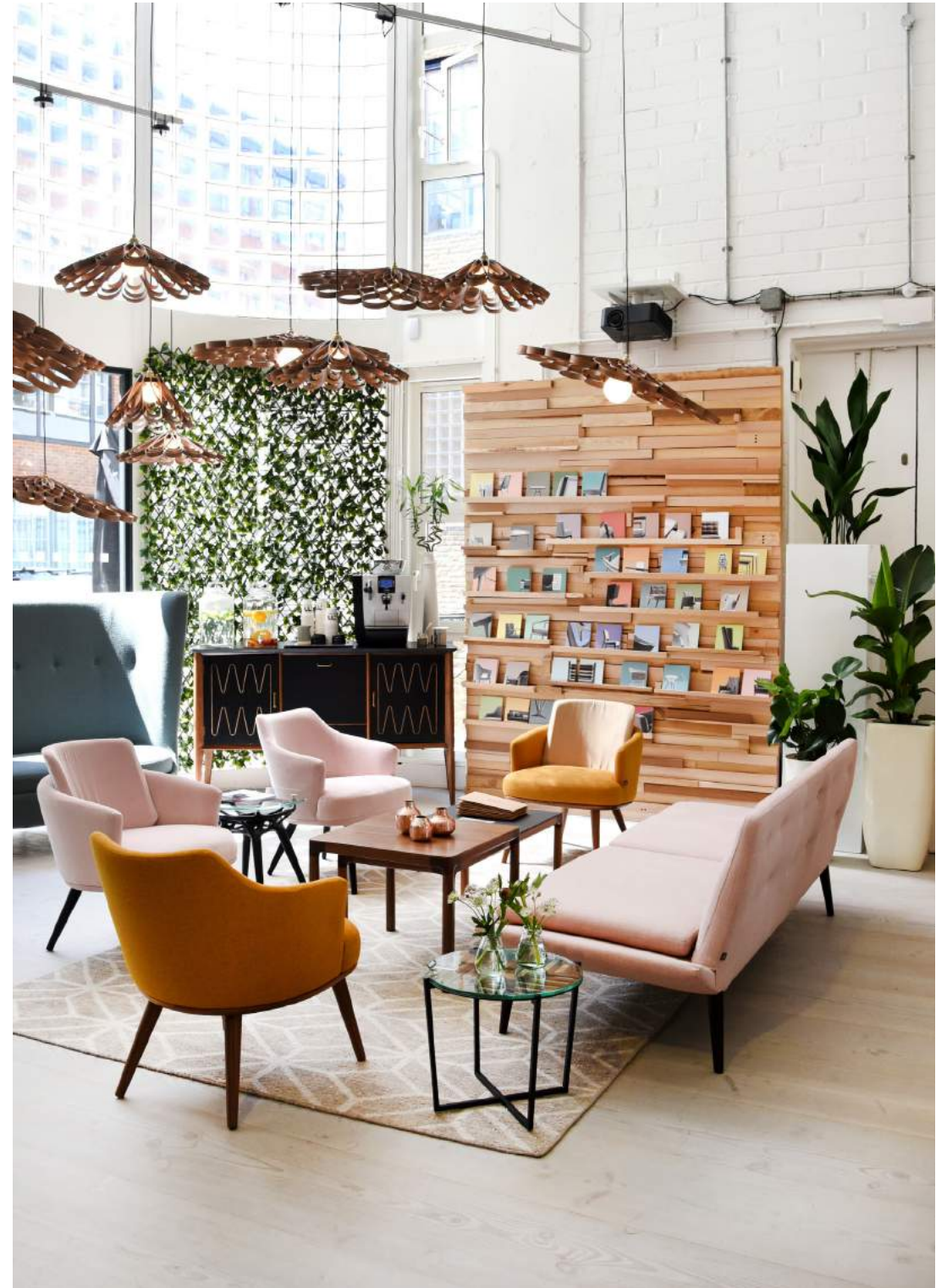
"These guys – for their attitude towards the creative process. The arts. Their company. Their clients. Cool on every level and an absolute pleasure to work with."

Mark McClure, Artist

"It's not often you get the opportunity to work with lovely people in a very cool central London space. So saying no just wasn't an option for me."

Remi Rough, Artist





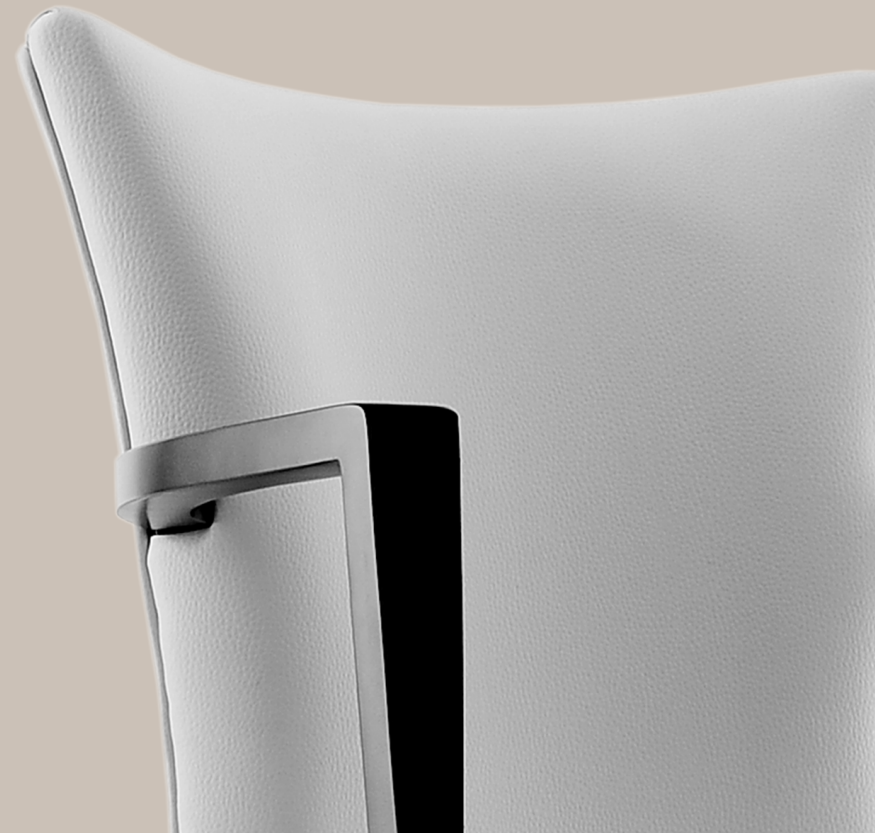


ATLANTIC



Designed by Katerina Zachariades.

The Atlantic collection offers classic contemporary dining chairs available with an elegant timber arm, as well as two back height options and a stacking chair variation. The comfort of the sculpted elegant curved back allows for long meetings or fine dining.



BOSTON



Designed by Katerina Zachariades.

The Boston collection is a comprehensive series of dining chairs, lounge chairs and tables, with a slender timber frame inspired by Cruise Liners and Colonial Hotels. All chairs are available with or without arms, with a choice of three back options; panel back, half panel back and woven leather back. The arms feature a fine finger joint and curved profile that is light and elegant. The lounge chairs have deep and generous seats and lumbar cushions as standard.



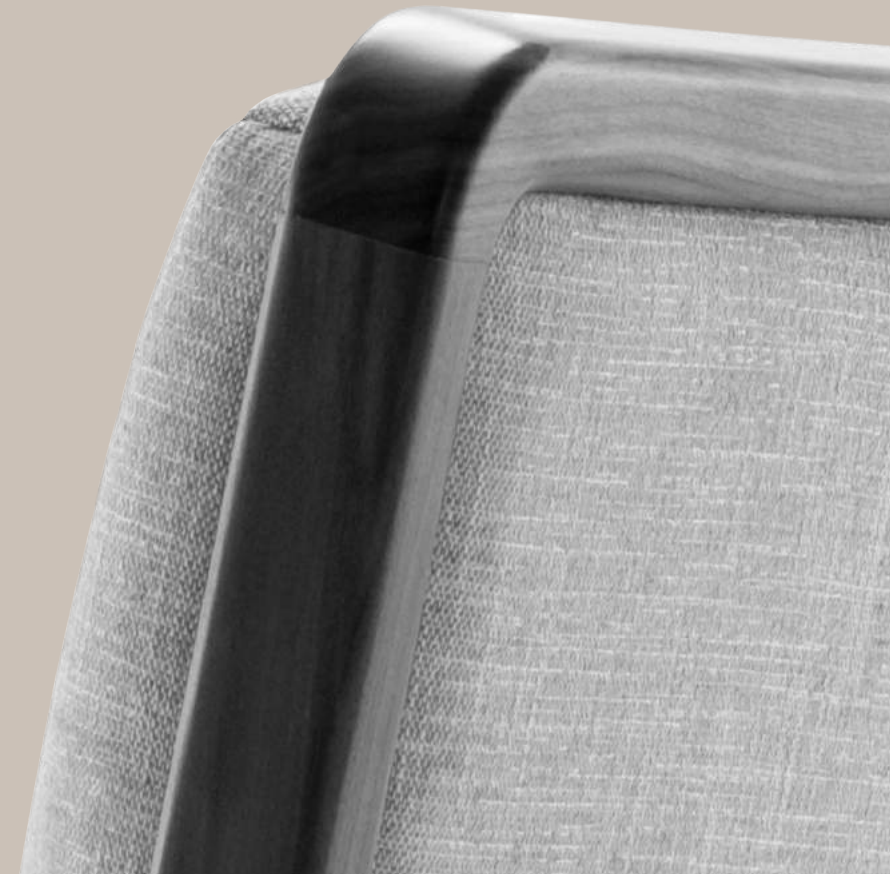
BROMPTON



Designed by Katerina Zachariades.

The Brompton collection offers contemporary upholstered detailing with a traditional touch, including lounge chairs, sofas and modular options. A block like form is softened with radiused upholstered corners and a pulled seam, enhancing the lumbar support and dividing the plain back.

The armchair features an optional timber back detail, creating a separate upholstered back panel and the opportunity to customise by specifying contrasting fabric.



CHELSEA



Designed by Katerina Zachariades.

Designed primarily as a restaurant chair, the Chelsea collection is light and elegant, combining timber detailing with crisp upholstery. Featuring curved seat rails that make a playful repeat especially when the chairs are viewed from the back. Available as a side chair and an armchair, the chairs feature a piping detail or nail trim detail.





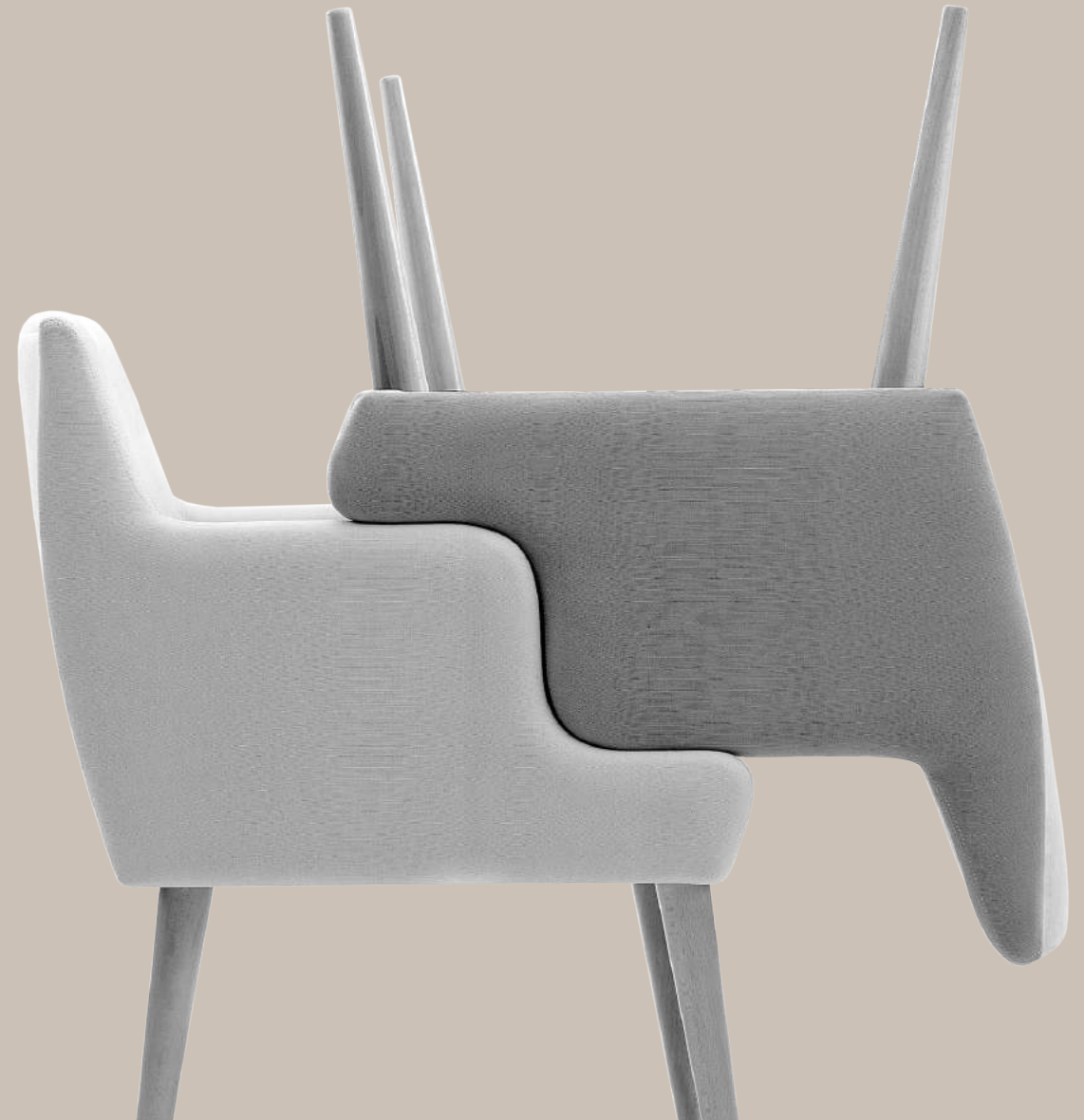
Designed by Katerina Zachariades.

The Chevy collection owes its inspiration to the 1950s and the styling and elegance of that era. It comprises dining and lounge chairs with turned timber legs and a fully wrapped seat detail suitable for any contract environment.

Echoing the mid-century styling of the seating, the Chevy coffee tables feature tapered timber legs and a selection of round and pebble shaped top options. Available with brass ferrules and Carrara marble inserts, the tables can be customised to suit.



CHEVY



CITY

Designed by Morgan Studio.

Modern, sharp and minimal, the City collection consists of upholstered lounge seating, side chairs, bar stool and sofa, and a collection of metal coffee and dining tables. The low back side chair has been designed to fulfil the requirement of fitting under a desk.

Double top stitching and a sleek timber base add detail to this ergonomically designed collection, with optional quilted upholstery.

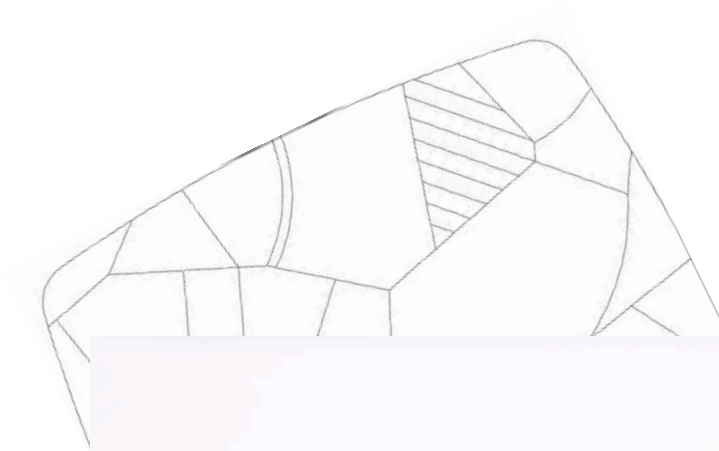


GOODWOOD

Designed by Katerina Zachariades.

The timeless Goodwood collection features a group of dining and lounge chairs with a distinctive timber arm detail. Inspired by freeform shapes found in art mobiles and hand carved timber sculptures, the collection includes a high back chair as well as a fully upholstered arm option. The nesting coffee tables and console table complement the seating collection, with mirroring distinct chamfered edges.





Following Mark McClure's bold and dynamic installation in our Clerkenwell showroom in 2017, we collaborated for a second time with the artist to create a selection of feature coffee tables.

Pushing the boundaries between furniture and art, the tables are characterised by strong geometric inlay tops with splashes of brass. Combining Mark's signature use of mixed material and graphic lines with the sculptural forms of the Goodwood collection, the tables are a striking feature for any interior.

HAMPTON



Designed by Katerina Zachariades.

Featuring contemporary lines with hints of mid-century upholstery detailing, the Hampton collection combines a distinguished presence with a relaxed and comfortable sit. The modular sofa system allows for larger seating configurations, while the coffee tables provide an elegant addition to the seating area.



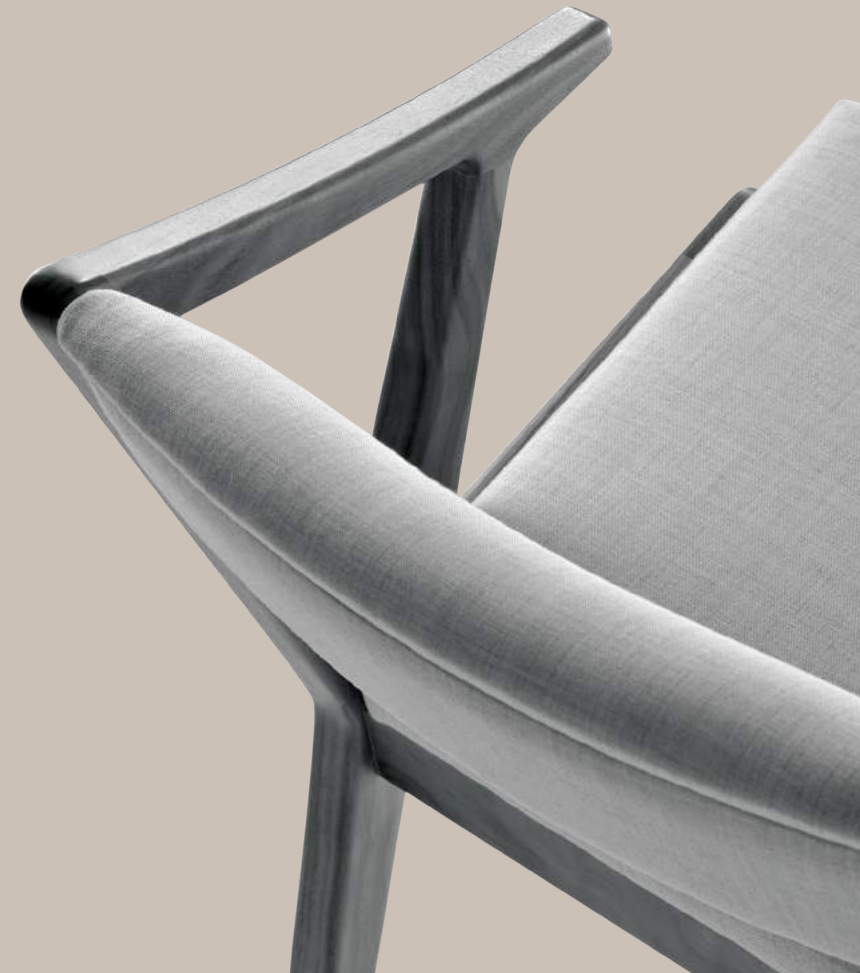
HAVANA



Designed by Katerina Zachariades.

The Havana collection offers a sculptural timber frame lounge and dining chair with a simple upholstered seat and back pad.

A refined, hand crafted and distinctive side profile offers an original aesthetic to this archetypal mid-century style.

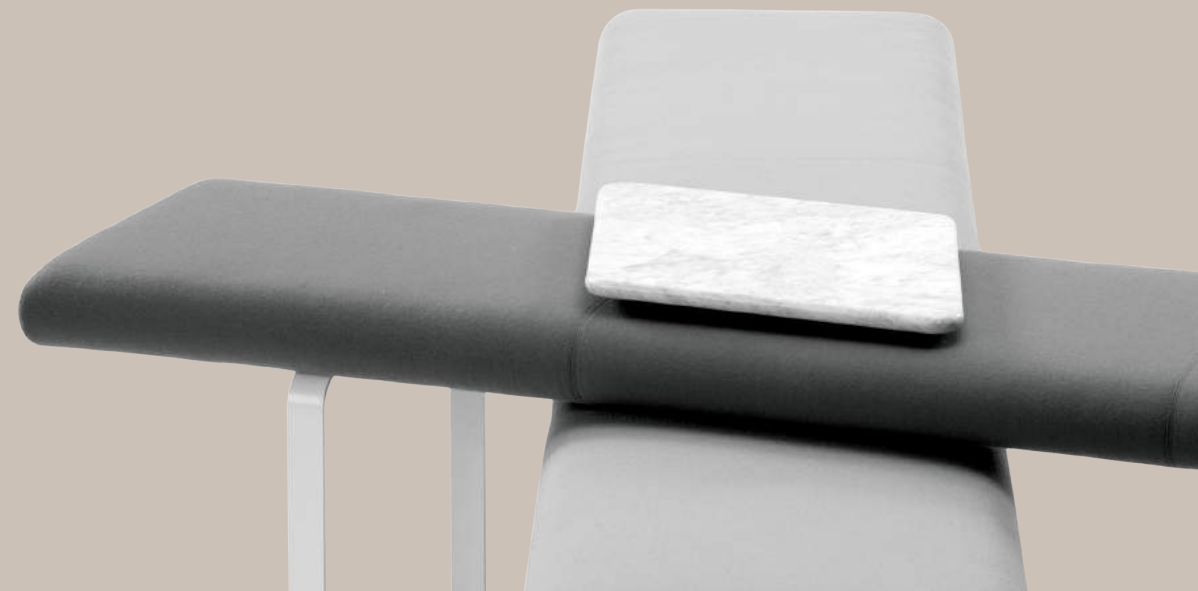


KYOTO

Designed by Morgan Studio.

Inspired by Japanese gardens and bridges, Kyoto is a system of linear intersecting benches that interlock to create asymmetric, dual height reception seating compositions. The Kyoto collection also offers coffee tables.

The 10 Kyoto configurations available can be specified in contrasting fabrics, with tables available in timber, laminate, glass and Carrara marble; giving the designer the scope to compose a bold graphic statement or opt for a more tranquil tonal palette. The sled bases are available in white, black or polished brass plated finishes.



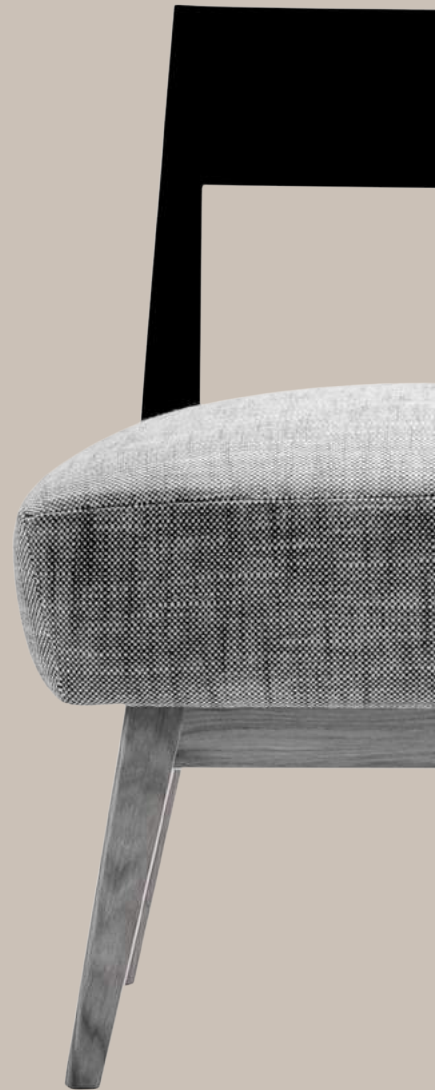
LIMA



Designed by Katerina Zachariades.

The Lima collection is light and playful. Featuring dining chairs as well as small lounge chairs, ottoman and barstool, they each feature a shaped seat cushion and timber or upholstered back.

Constructed in three elements, base, seat and back they offer the option of natural timber combined with a painted finish. Coffee tables are also available.



LUCCA

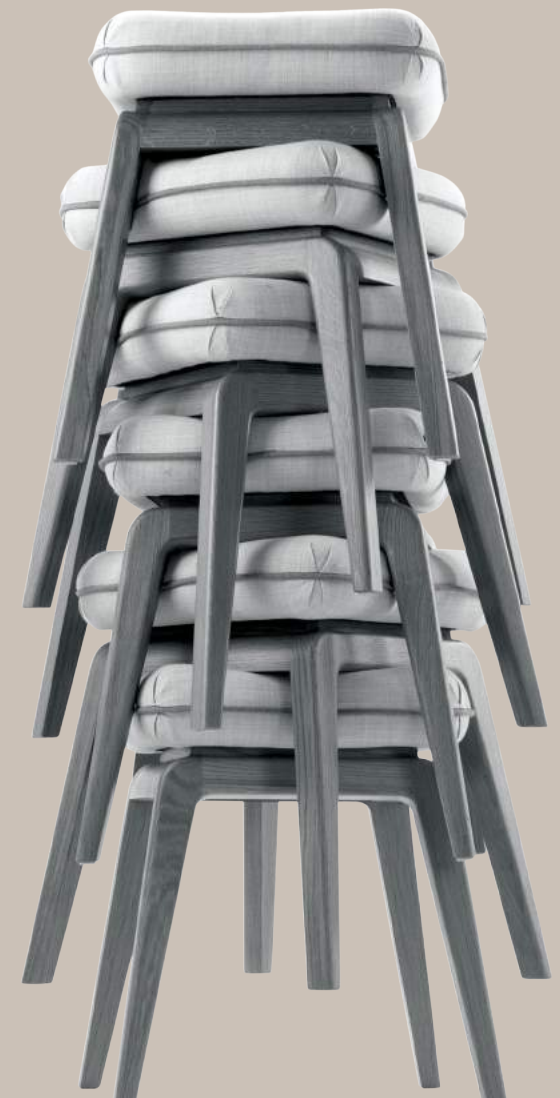


Designed by Morgan Studio.

The Lucca collection is comprised of a dining / meeting chair, stools and barstool, featuring a tapered timber base and slim-line upholstered seat creating a contemporary aesthetic, ideally suited to informal dining or workplace interiors.

Featuring a fully upholstered seat with a continuous piping detail to accentuate the radiused profile, the design gives the illusion of a seat that floats above its elegant base.

Collaborative working is encouraged with this workbench system, offering bar height tables and benches. A solid timber frame with a laminate top, the workbench allows for work, meetings or standing conversations, available with integrated power and aircharge® modules.



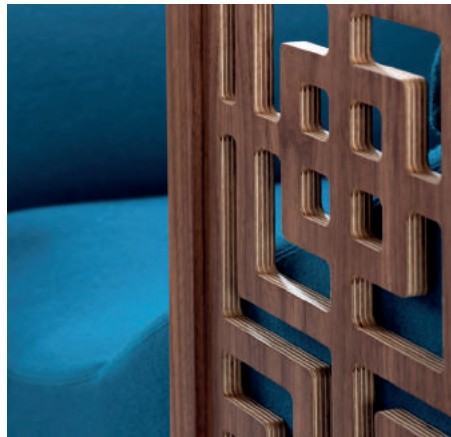
MANHATTAN

Designed by Katerina Zachariades.

The Manhattan collection is a versatile, contemporary modular system available with black or white epoxy or showwood leg detail, ideal for informal workspaces, reception or lounge environments.

A multitude of configurations can be achieved based on three main elements: seat module, screen and plinth. These create the main assemblies onto which arms, legs and headrests can be added.

The MN41 single work booth features an aircharge®, power modules and a pivoting laptop table.



METRO



Designed by Katerina Zachariades.

Bold and contemporary, the Metro collection features an upholstered body with button back detail, a separate timber or metal base and optional timber arms.

A playful take on a mid-century style, the collection offers a lounge, high back wing chair and sofa with a timber base. The lounge chair is also available with a wire sled or timber rocking base.



MIAMI

Designed by Katerina Zachariades.

The Miami collection of sofas, chairs, stools and bar stools offers a striking contemporary take on a vintage style.

A considered ergonomic frame ensures a comfortable and generous sit while maintaining a lightweight aesthetic. The sofas feature buttoned backs – the chairs are plain or buttoned on request.

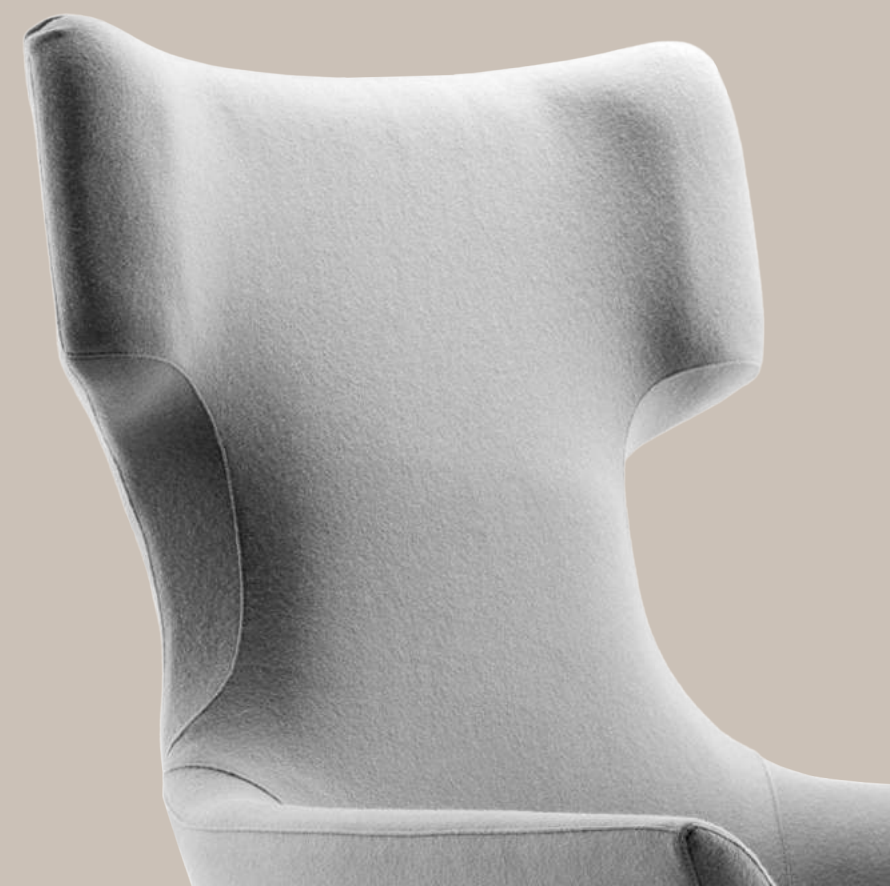


MODENA

Designed by Katerina Zachariades.

The Modena collection is made up of contemporary tables, lounge chairs and sofas including a versatile modular system.

The stylish Modena chair is generous, with a sweeping upholstered arm detail that creates a sharp profile but also a soft inviting shape. A showwood base features profiled edges and inset legs. The small lounge & high back wing chair are also available with a brushed nickel swivel base.



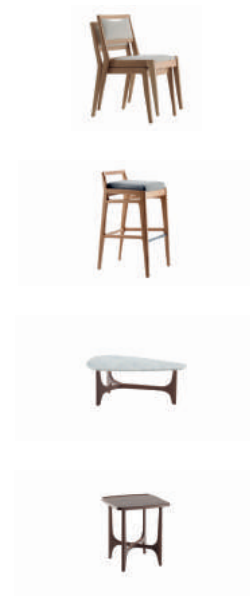
OPERA

Designed by Katerina Zachariades.

Classic and refined, the Opera dining chairs feature a slender timber frame with a hand grip detail and deeply padded seat for comfort. The lounge chair has been designed with a generous seat and fully upholstered or timber arms to match the dining chair.



OSLO



Designed by Morgan Studio.

Oslo is a lounge and dining collection offering a Scandinavian inspired slender frame profile. Chairs feature an elegant timber skeleton with simple drop in upholstered seat and back pads. CNC manufacturing techniques have been used alongside traditional manufacturing to achieve a hand-crafted aesthetic.

PANAMA

Designed by Morgan Studio.

The Panama collection of dining and lounge chairs features a slim, angled dynamic form and sharp square upholstery detailing. An ergonomic seating angle and webbed seat create a light and comfortable contemporary chair.

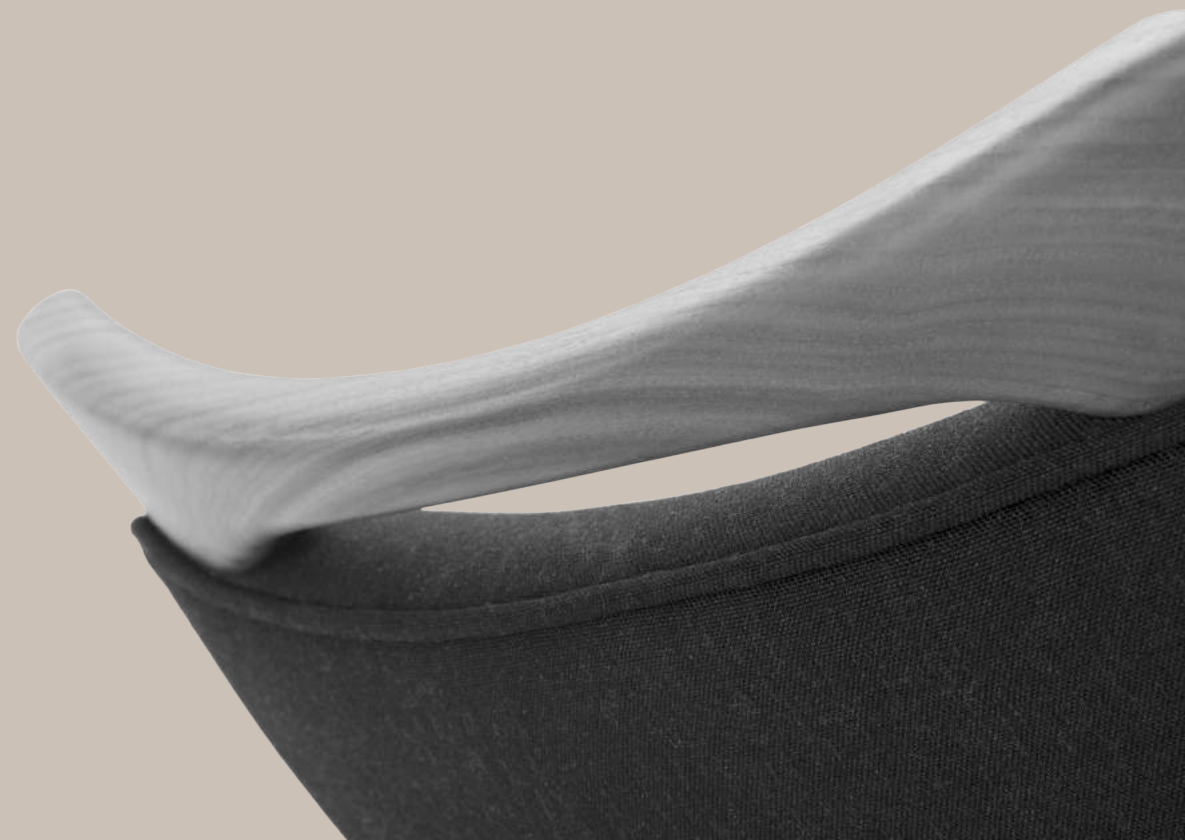


PARIS



Designed by Katerina Zachariades.

The Paris collection has been inspired by 1940's design and the traditional classic detailing of the period. The collection has then been developed into three dining / meeting chairs and bar stools, with the same fully upholstered seat and different back treatments. A traditional wave shaped top edge, a handle shaped showwood top detail and a large curved back gives each of the three chairs a distinctive eclectic character.



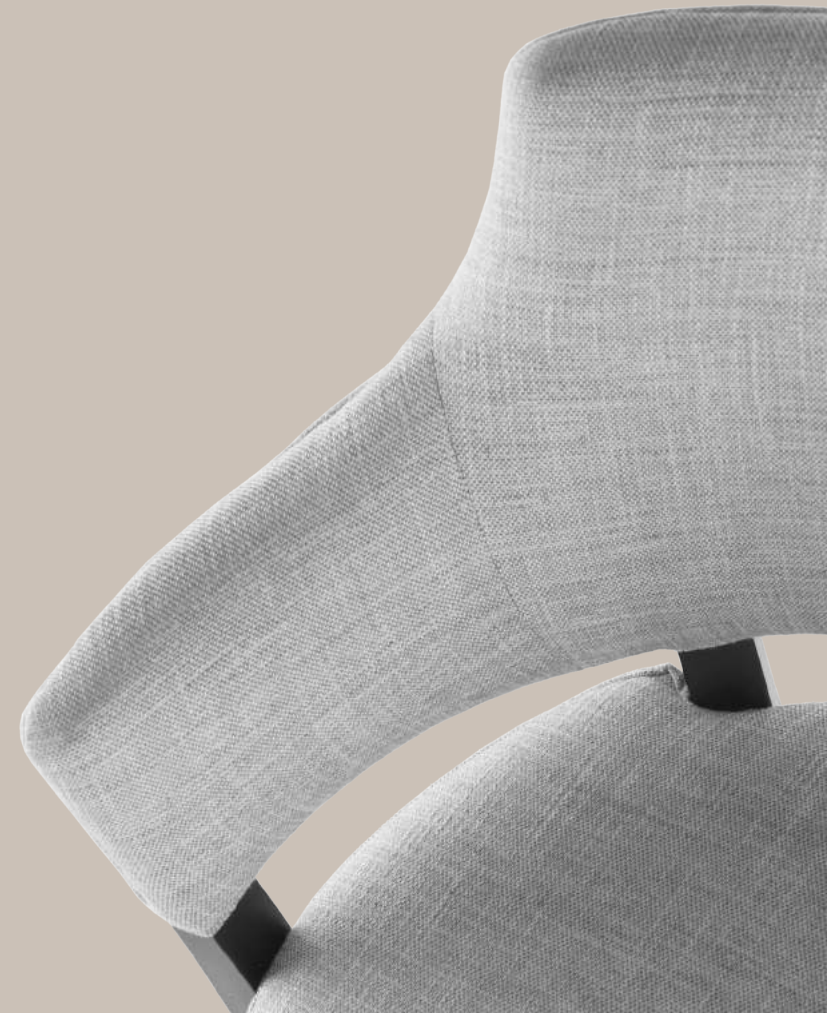
PASTILLE



Designed by Katerina Zachariades.

The Pastille collection of dining chairs and stools offers a classic contemporary form and elegant showwood detailing with long sit comfort and a compact footprint.

Distinguished by a round seat, curved rails and the sweeping arc of the arms, they offer three variations of a light versatile chair. The bar stool is also available with a hidden swivel mechanism.



Designed by Morgan Studio.

Starting as a small bedroom chair, Pimlico was created by the Morgan Studio team, featuring smooth curved lines and a unique inset oval seat pad which is wrapped by the frame. Fully upholstered for maximum comfort, Pimlico succeeds in offering a look which is youthful as well as being timeless and elegant.



PIMLICO



PORTO



Designed by Morgan Studio.

The Porto collection is light, minimal and versatile. The ergonomics and foam specification ensure comfort in both dining and lounge configurations. The products are engineered and detailed to allow for simplicity or luxurious detailing. The three armchairs can be specified with an upholstered base, a show wood timber base, or a steel frame base.



RAKINO



Designed by Tim Rundle.

The architectural Rakino lounge collection juxtaposes soft sculpted upholstery with a strong, low line frame. The clean linear structure emphasises crisp timber detailing born from a dialogue between the precision of CNC manufacturing and a handcrafted finish. The collection offers two lounge chairs and a selection of coffee tables.





RIBB



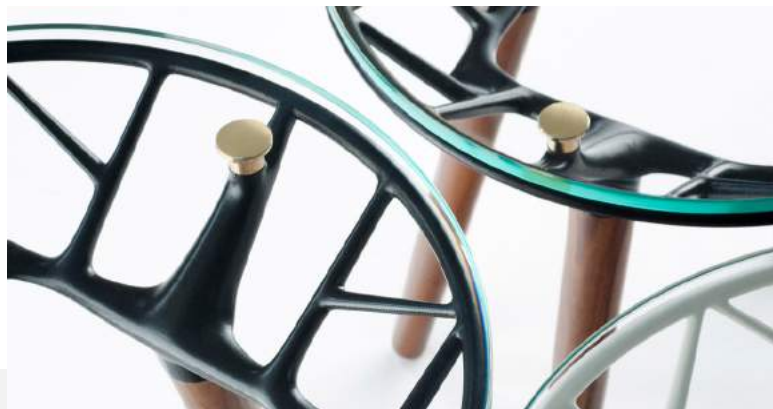
Designed by Katerina Zachariades.

The Ribb collection of sofas and chairs is based on a square exterior, contrasting with a soft 'ribbed' interior and is available in several lengths and back heights with timber legs.

Whether long and low or boxy and compact, clean horizontal lines combine with plump upholstery to create a relaxed and comfortable seating collection. The distinctive style of the high back creates a booth seat that is both intimate and imposing, with the opportunity to specify an accent fabric on the seat or individual ribs for a bold graphic effect.



RIO



Designed by Morgan Studio & studio INTEGRATE.

In collaboration with studio INTEGRATE, the Rio collection explores combining the craft of today with the craft of tomorrow. The collection offers a series of dining / meeting chairs with three back rest options: timber, upholstery or a 3D printed component, as well as tables.

The 3D printed construction uses a mathematical algorithm to create an intricate sculptural design, printed in polyamide, and lacquered to offer a durable finish. This technique is a key feature of the striking tables, which feature a 3D printed component that links the glass or timber top to elegant timber legs.



ROTUNDA

Designed by Katerina Zachariades.

Featuring generous and plump upholstery, the Rotunda collection comprises lounge seating, with a deep button detail, offering elegance and comfort in a classic style. A curved tub style back rest encloses the seat, providing a compact and ergonomic sit. Three back height options are available, as well as coffee tables.



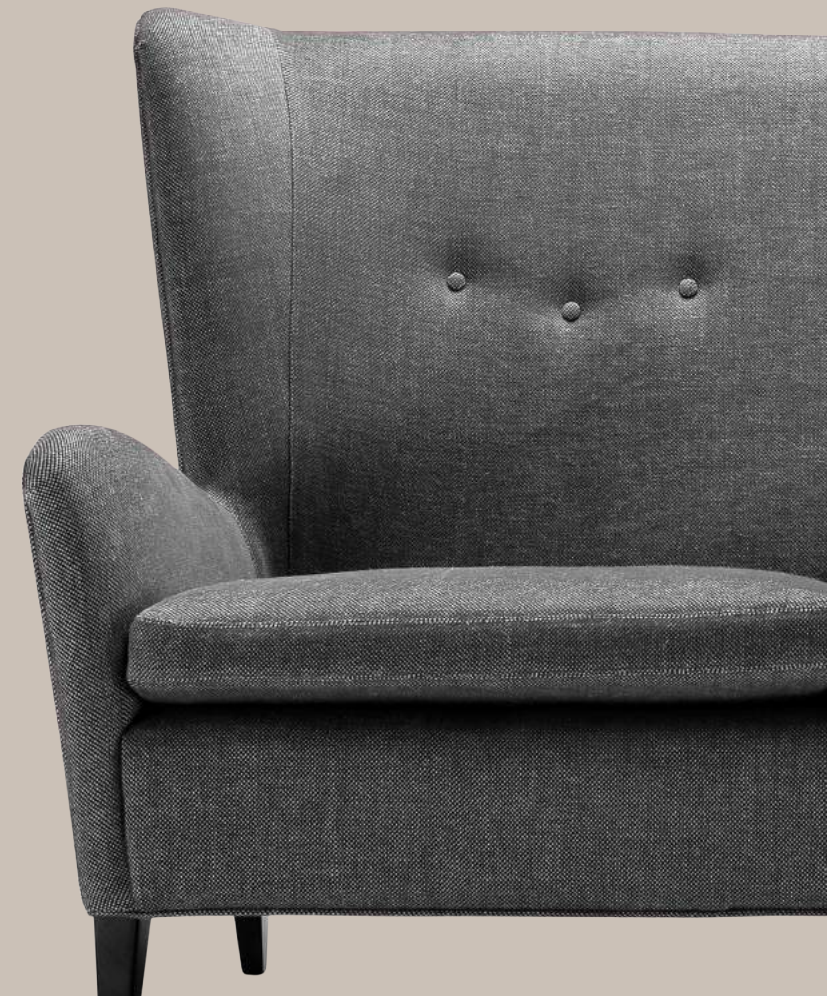
SEVILLE



Designed by Katerina Zachariades.

Contemporary and classic, Seville is an elegant lounge, dining seating and table collection. The Seville high back wing chair is our interpretation of a traditional club chair with a contemporary look, offering a distinguished presence and a flowing elegant profile, reminiscent of a vintage style.

The lounge seating collection is available with either loose seat cushions or a fixed seat detail. A low back lounge chair and sofa are also available.

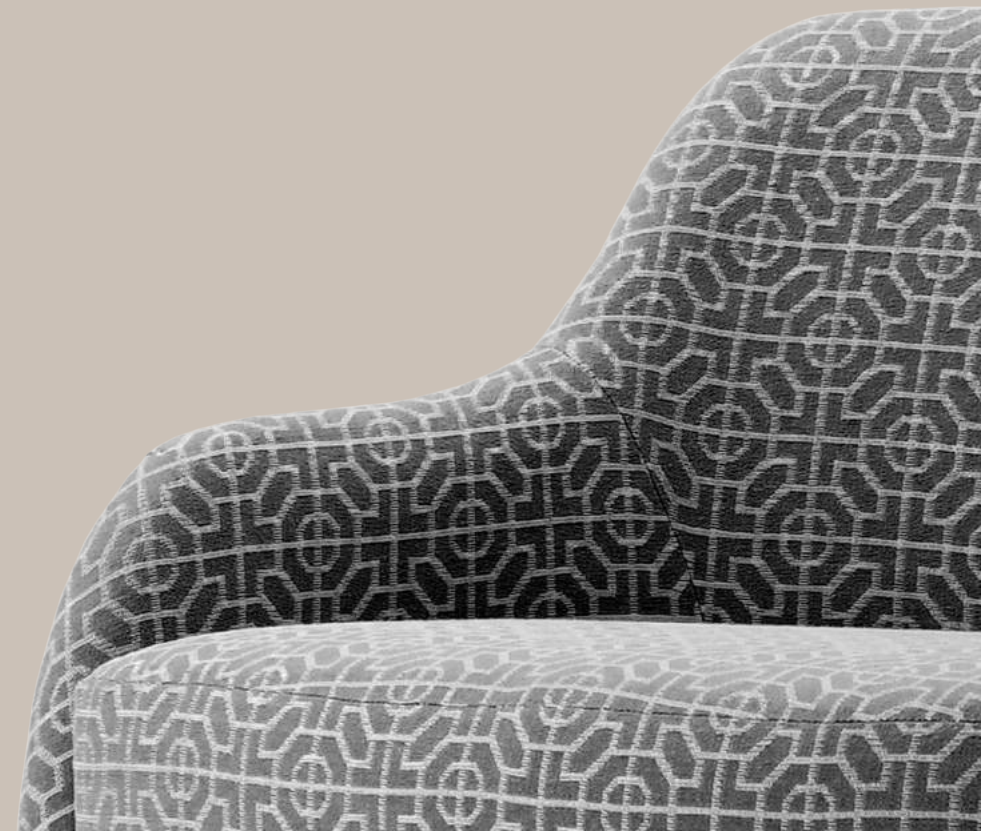


SIENA



Designed by Katerina Zachariades.

The Siena collection of lounge chairs also includes daybeds, ottomans and tables. The tub chairs feature a flowing curved profile and tapered turned legs or, as an option, a polished timber showwood base. Available with button detailing and / or a hidden swivel mechanism.

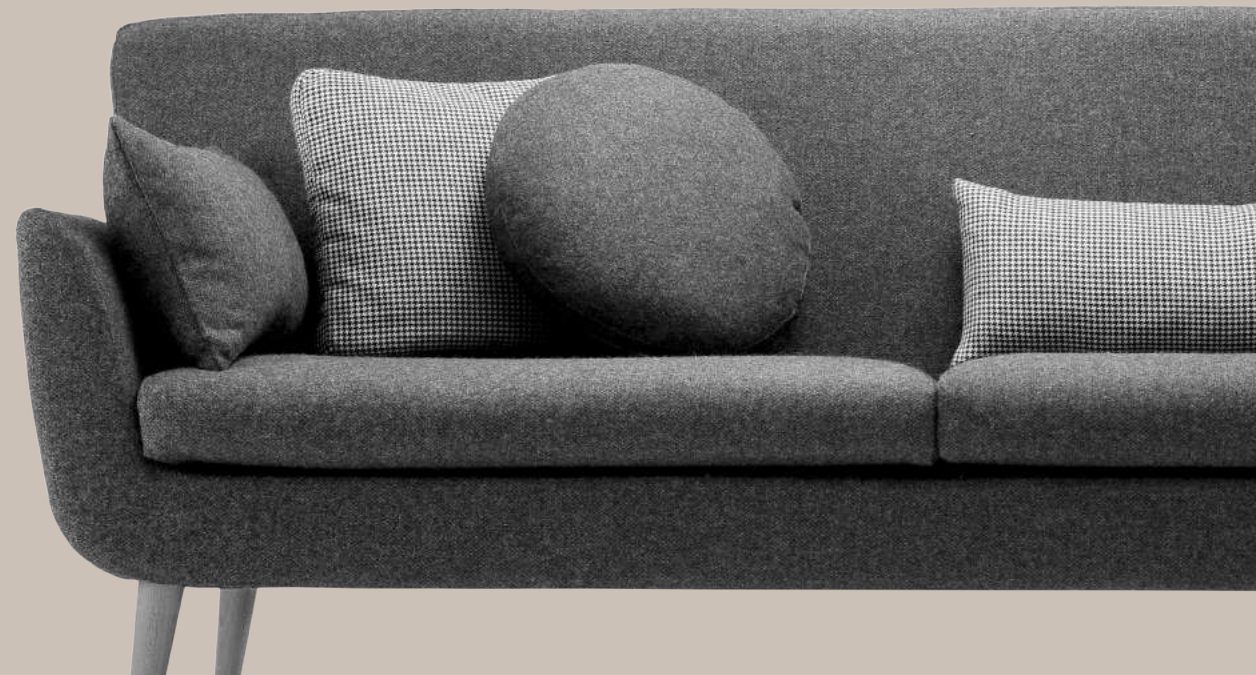


SOHO



Designed by Katerina Zachariades.

The Soho collection of sofas and chairs is contemporary with echoes of 1950s styling. Softened corners and a high back create a comfortable and distinctive form. Available with button back upholstery detail to enhance its mid-century character. The collection also offers a retro daybed, coffee tables and dining tables.

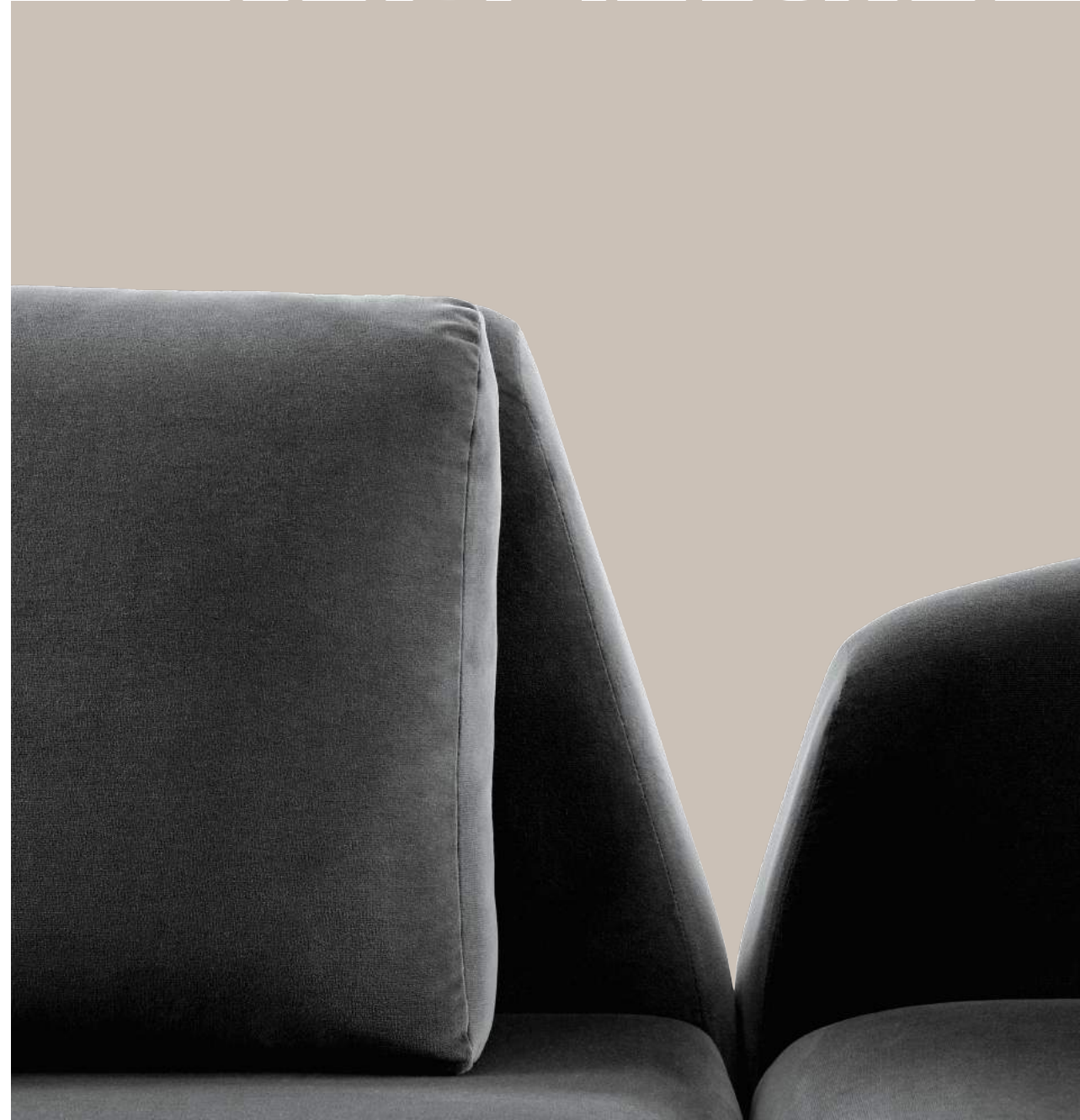


VALENCIA



Designed by Morgan Studio.

The Valencia collection is a modular system of seating, which intersects to form multi-directional seating grids. The sharp and dramatic profile is available as a full back, three-quarter back or half back module. Between modules, a sculptural 'V' shaped gap is created. The collection also consists of elegant tables of varying sizes and finishes.



VERONA

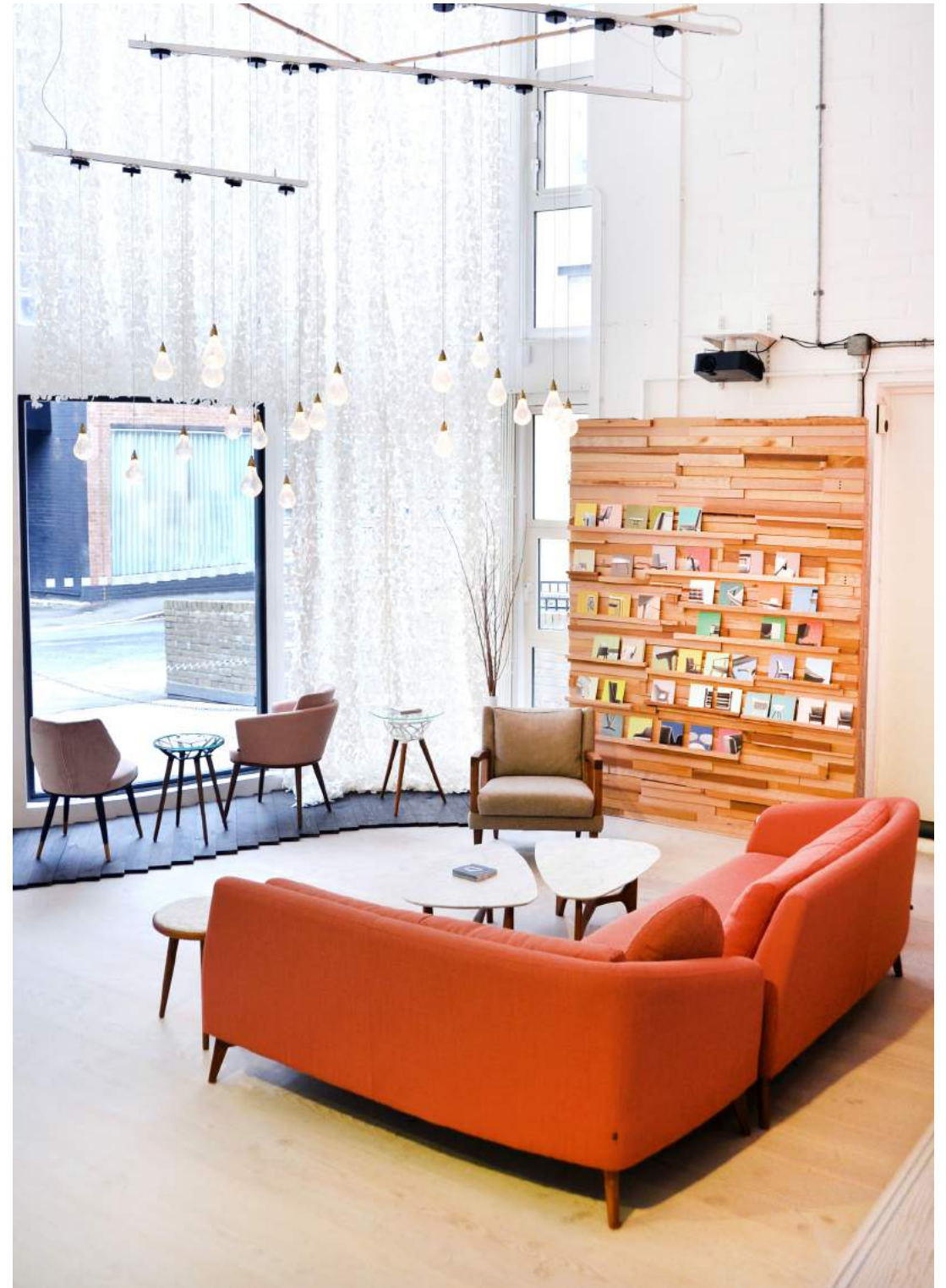


Designed by Katerina Zachariades.

The Verona collection of sofas and chairs has been designed to provide a softer domestic sit and feel, while meeting contract requirements for a firm cushion.

The versatile range of options are available either on timber bases or chrome legs and can be linked into a modular system, including a corner unit. Scatter cushions are included.





Workplace

Hudson Sandler, *designed by Morgan Lovell*





Marylebone Town Hall, designed by Sheppard Robson

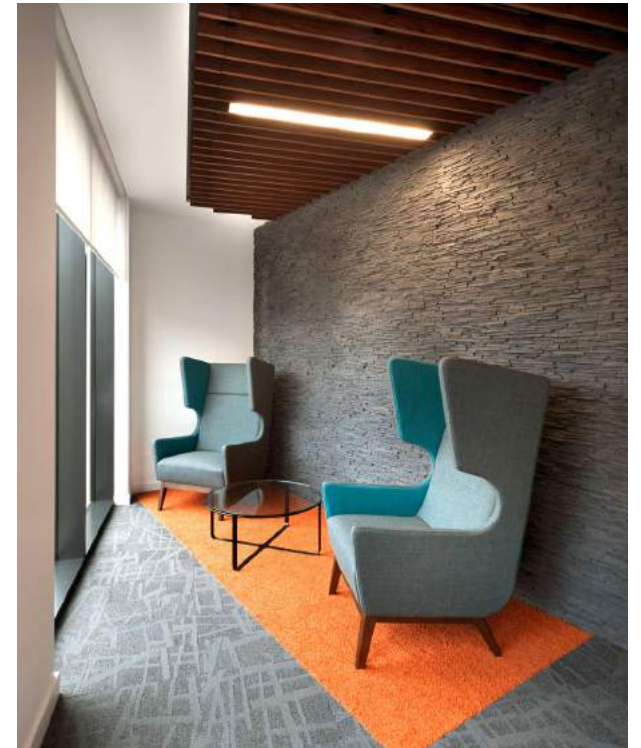


Hewlett Packard, designed by IA Interior Architects

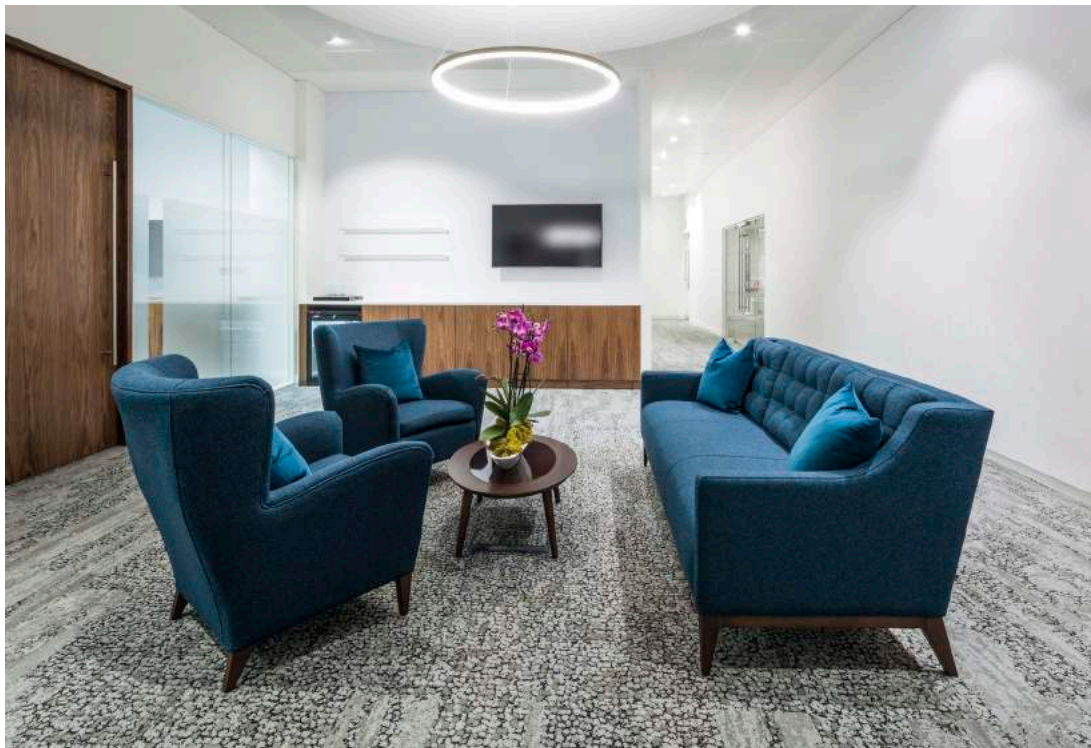


"It's such a treat to work with a British manufacturer: Morgan's upholstery is excellent, the product is robust and well priced, with high design values central to their operation."

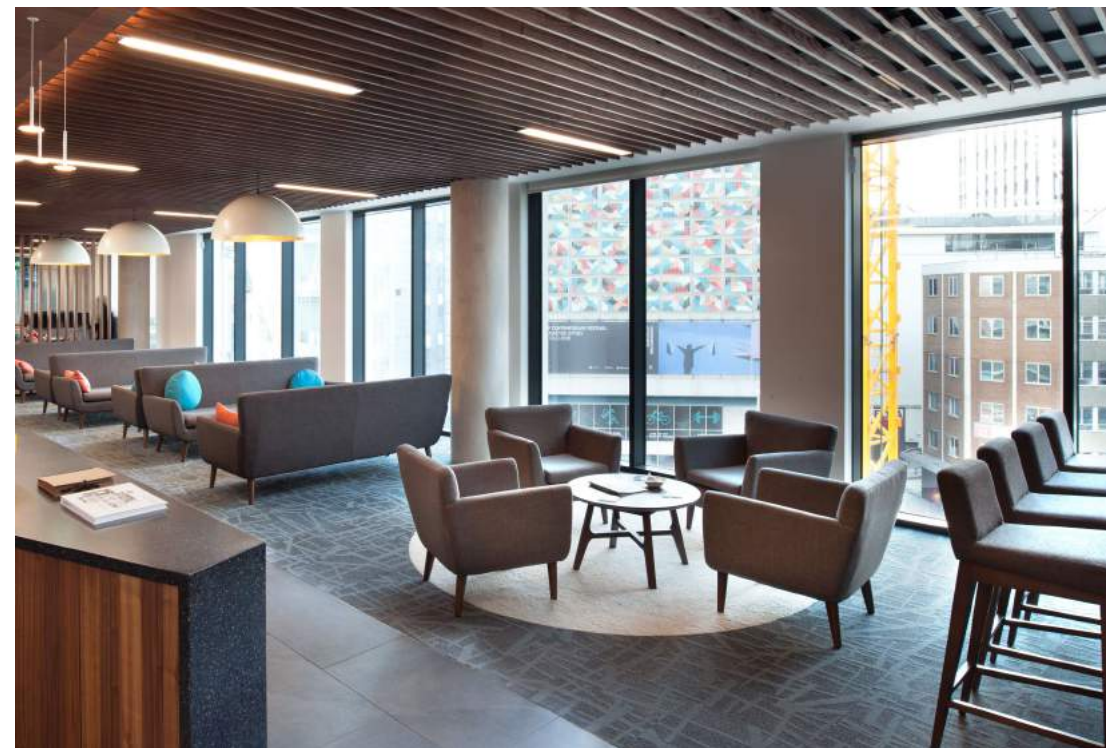
Ross Hunter, MD Graven



MotoNovo, designed by Morgan Lovell



Minster Court, designed by Burr-Jones & Brewer



Hospitality



Ascot Racecourse, *designed by 2020*





Wimbledon Courtside Restaurant,
designed by SHH Architecture & Interior Design



"Morgan have been a valued British design partner of SHH for many years. Their hand built furniture and custom design talents are on brand for many of our British clients."

The courtside restaurant is a huge success with many bespoke items. They are a pleasure to develop a product with and their depth of knowledge shows in the final product."

Neil Hogan, Creative Director and Co-Founder of SHH

Above/Below: Wimbledon Courtside Restaurant, designed by SHH Architecture & Interior Design



Right: Wimbledon The Champions' Room, designed by SHH Architecture & Interior Design





The Halkin, designed by *Forme UK*

“Morgan’s varied portfolio of well made contemporary furniture makes them an obvious choice for selection; in terms of aesthetics, practicality and price.”

Linzi Coppick,
Design Director *Forme UK*

Clayton Hotel Chiswick, designed by *Cunningham McLean*



Clayton Hotel Whites, designed by *Cunningham McLean*



Apex City of London, designed by *ISA*



Hotel Okura Amsterdam, *designed by GA Design*



“One of the highlights of working alongside Morgan is feeling as though you are very much part of the production process. Getting to visit the factory and see first-hand how they produce their bespoke, local furniture was thrilling and testament to the quality of their pieces.”

Jimmy Batri, GA Design

Andaz Liverpool Street, *designed by Conran & Partners*





Healthcare



Private Clinic London, *designed by DDSB*

“Refreshing to work with a British manufacturer who produces quality products with design at its heart. Always a delight to work with a friendly, approachable and responsive team.”

Corinne Pringle, Director tp bennett



Private Hospital, The Shard, *designed by tp bennett*

Bentham House, *designed by PRP*



Genesis Care Windsor, *designed by Ward Robinson*



Cruise



MS EUROPA - Hapag-Lloyd Cruises, *designed by Cubik 3*

Queen Mary 2, *designed by SMC Design*



Oceana, P&O, *designed by RPW Design*

CHAIRS



City 532L



City 532



Lima 860



Lima 861



Porto 244T



Porto 243T



Lucca 740T



Pimlico 145



Pastille 5040



Pastille 5041



Panama 841



Oslo 121



Havana 870A



Havana 872SL



Paris 851



Paris 851A



Paris 852



Paris 853



Atlantic 203



Atlantic 203A



Atlantic 203H



Opera 152H



Opera 152HA



Boston 821



Boston 821A



Boston 822



Boston 822A



Boston 823



Chelsea 501



Chelsea 501A



Panama 841A



Oslo 121A



Goodwood 172A



Pastille 5050



Pastille 5051



Pastille 5052



Pastille 5053



Chevy 709



Chevy 710



Goodwood 172U



Seville 753



Seville 753A



Seville 753ASQ



Siena 620



Hampton 550



Hampton 550B



City 530T



Oslo 121ST



Panama 841ST



Atlantic 203ST



Atlantic 203AST



Boston 821AST



Porto 240T



Porto 240EP



Porto 241EP



Porto 241T



Porto 242EP



Porto 242T



Rio 180SK



Rio 180T



Rio 182T



Rio 181



Rio 181T



Lucca 740S

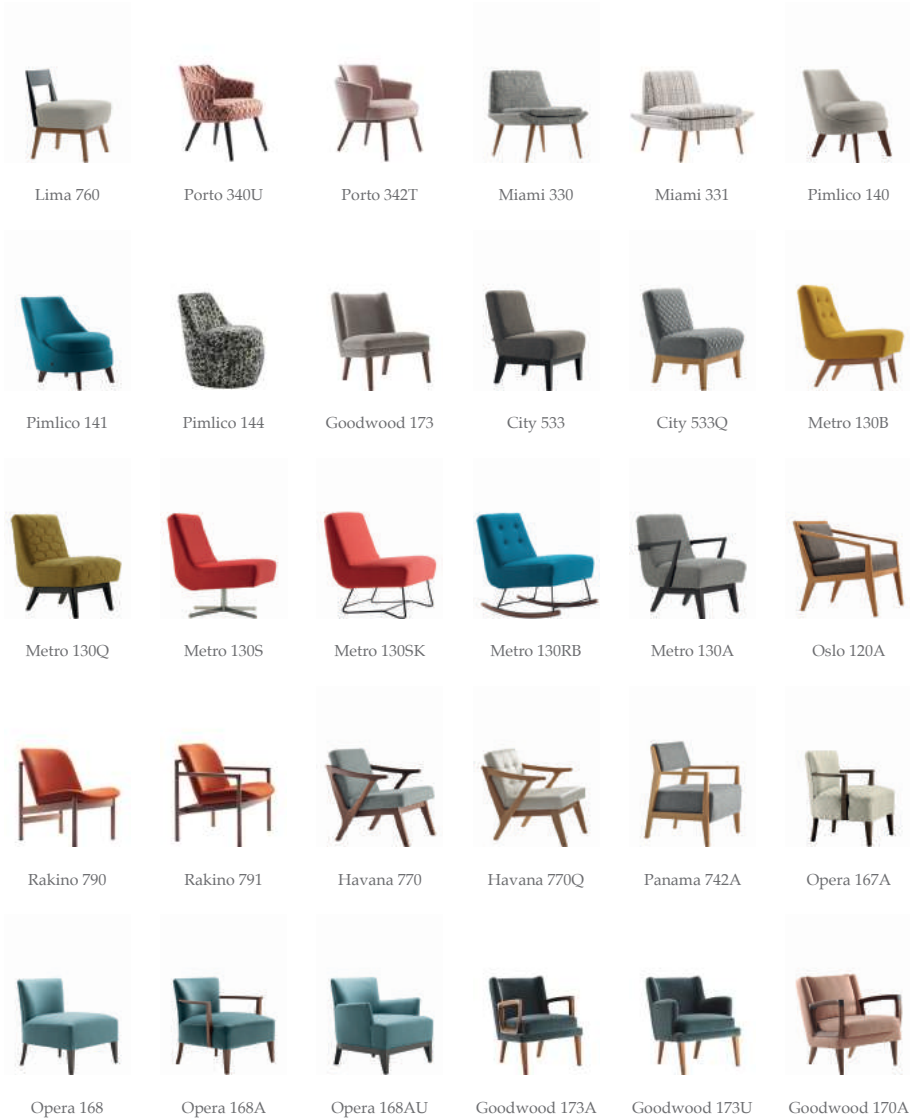


City 530SBL



Pastille 5055

LOUNGE





Verona 380

Verona 381

Manhattan MN1

Manhattan MN1L

Modena 585T

Modena 585S



Metro 134

Metro 135

Seville 750

Pimlico 142L

Pimlico 142R

Ribb 368

SOFAS



Hampton 552T



Hampton 553T



Hampton 556T



Hampton 557-2T



Hampton 557-3T



Hampton 557T



Hampton 554T



Hampton 552LT



Hampton 553LT



Miami 332



Miami 333



Brompton 547



Brompton 542



Brompton 543



Brompton 544R



Brompton 544



Brompton 545



Brompton 545R



Manhattan MN3TC



Manhattan MN3TL



Manhattan MN2L



Manhattan MN11



Manhattan MN11L



Manhattan MN15



Manhattan MN22CLR



Manhattan MN22LR



Manhattan MN41L-HR1



Manhattan MN23L



Manhattan MN23LS



Manhattan MN5



Pimlico 146



Pimlico 147H



Pimlico 148



Metro 132B



Metro132AB



Metro 137



Seville 756-2



Seville 750-2



Seville 750-3



Modena 581L



Modena 582



Modena 582R



Siena 660R



Soho 562



Soho 563



Modena 584



Modena 583



Modena 583R



Soho 564R



Soho 567R



Soho 568



Ribb 362



Ribb 363



Ribb 364R



City 531-2



Valencia 571R



Valencia 571RT



Ribb 366



Rotunda 320



Rotunda 323



Valencia 573R



Valencia 572R



Valencia 576R



Valencia 574



Valencia 577R



Valencia 578



Valencia 579R



Verona 384CH



Verona 382RCH



Verona 382



Verona 385



Verona 383F

BENCHES



Kyoto 881



Kyoto 882



Kyoto 883



Kyoto 884



Kyoto 885



Kyoto 886



Kyoto 885T



Kyoto K1



Kyoto K3



Kyoto K5



Kyoto K7



Kyoto K9

BARSTOOLS



Lucca 437T



Lucca 437-2T



Lima 461



Panama 482



Oslo 421



Pimlico 442EP



City 430



Paris 451



Paris 452



Paris 454



Lucca 439T



Seville 453



Pastille 5044



Pastille 5044S



Pastille 5045

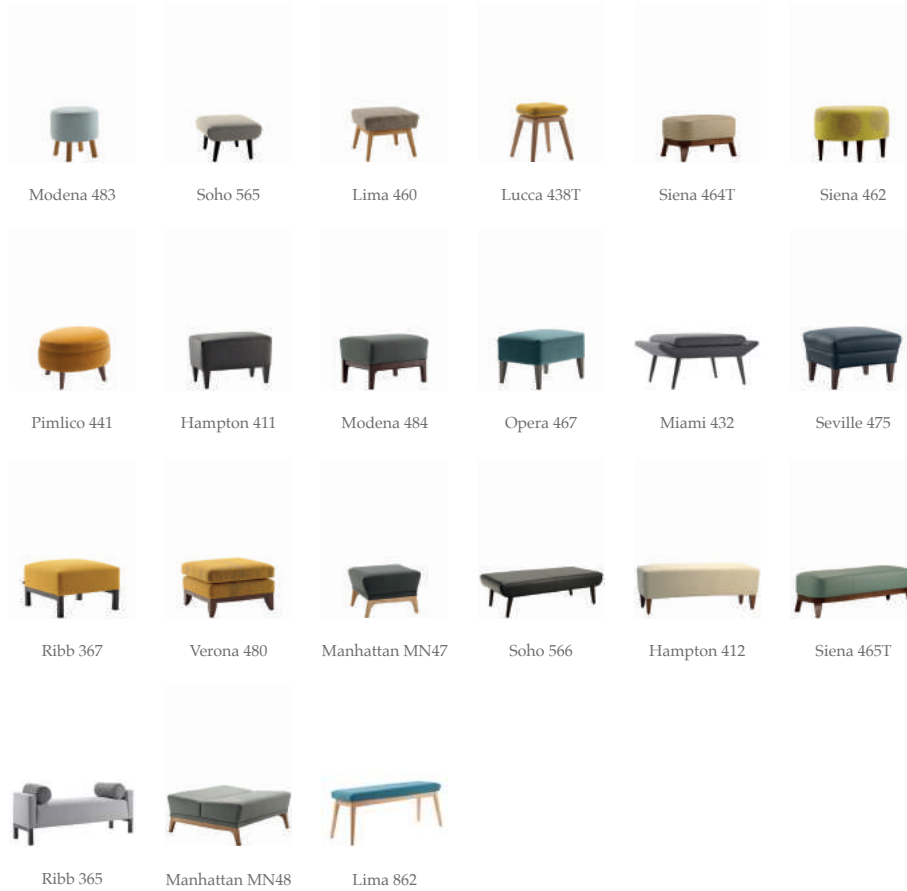


Pastille 5046

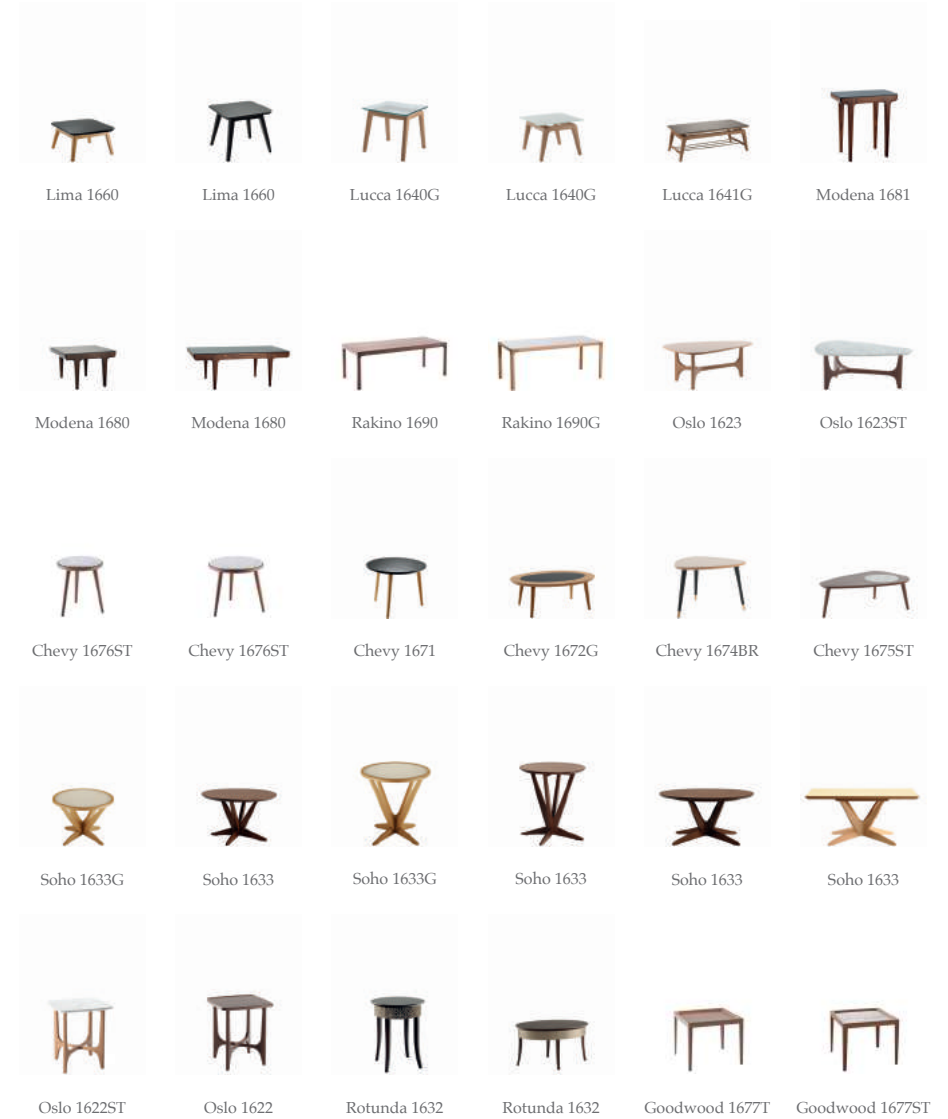


Miami 431EP

OTTOMANS



TABLES





Goodwood 1677G Goodwood 1677MM Goodwood 1677MM Rio 1619TBR Rio 1619GBR Rio 1618G



Rio 1628G Rio 1628G Kyoto 1683ST Kyoto 1684T Boston 1620CR Boston 1621CR



Metro 1610 Metro 1610 Valencia 1657G Valencia 1657G Valencia 1657ST Valencia 1658



City 1653G City 1653G City 1654 City 1654 City 1653SMG Verona 1661



Verona 1662G Verona 1661G Verona 1661G Verona 1663G Verona 1663T Boston 1620



Boston 1620 Boston 1620 Seville 1670 Seville 1670 Seville 1670G Seville 1670G



Hampton 1651G Hampton 1651G Lucca 1840 Oslo 1822 Paris 1852 Boston 1720



Soho 1733 Verona 1780 Verona 1780 Boston 1781 Boston 1820-4 Boston 1880-4



Boston 1880 Siena 1890 Siena 1891 Siena 1892 City 1808 City 1653CCEP



City 1808 City 1805G City 1805 City 1805P Boston 1881P Boston 1880P



Goodwood 1777 Boston 1721 Hampton 1751G Oslo 1722 Lucca 1741

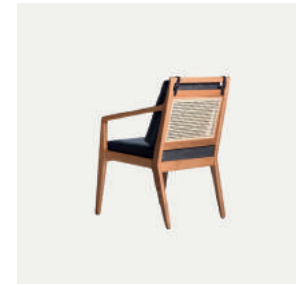


Seville 1870 Lucca 1937



Banquette

We offer banquette seating within a number of our collections, made up of modules that vary from 1000-2000mm in width to create a configuration that perfectly fits the specific interior. Each collection also offers a corner unit to extend the seating around corners and offer the perfect fit to any interior.



Bespoke

Alongside our collections, we offer a bespoke service, providing the ability to tailor our products to the particular requirements of a project.

From minor changes to dimensions, bespoke upholstery detailing or custom finishes, right through to the creation of an entirely customised product, we are able to create a product to suit the demands of your brief. Minimum quantities are required and can be agreed according to the scale of the project order. Bespoke prototyping requires 4-6 weeks lead time.



Bespoke length Metro banquette.



Bespoke banquette as seen in The Halkin.

Finishes

All of our furniture is made to order, and we are proud to be able to offer an extensive array of finishes across our collections to suit the requirements of each individual project. In addition to specifying custom fabrics for upholstery, our standard options include a choice of timber species, polish colour, table top materials and edge profiles as well as decorative metal finishes.

Table Tops

Our table tops are constructed with a 25mm MDF core and are available with a veneered or laminate finish with the option of a solidwood lipped edge detail. Using industry standard high pressure laminates and the finest kiln dried hardwood EUTR compliant timber, our tables are manufactured to withstand all contract environments.

Materials:

T – Veneer or Laminate

G – Glass (Clear, Sand Blasted, Acid Etched, Back Painted)

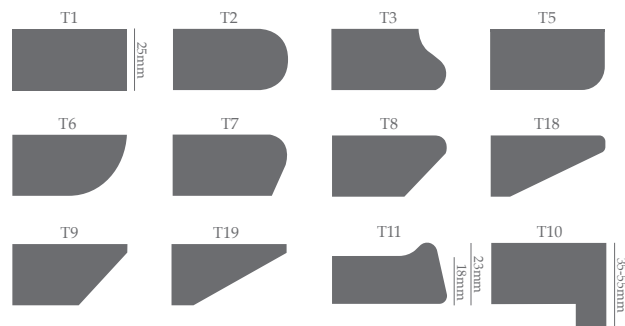
MG – Mirror Glass

SMG - Smoked Mirror Glass

CC - Compact Core

ST – Marble

Standard Edge Profiles, 25mm thickness:



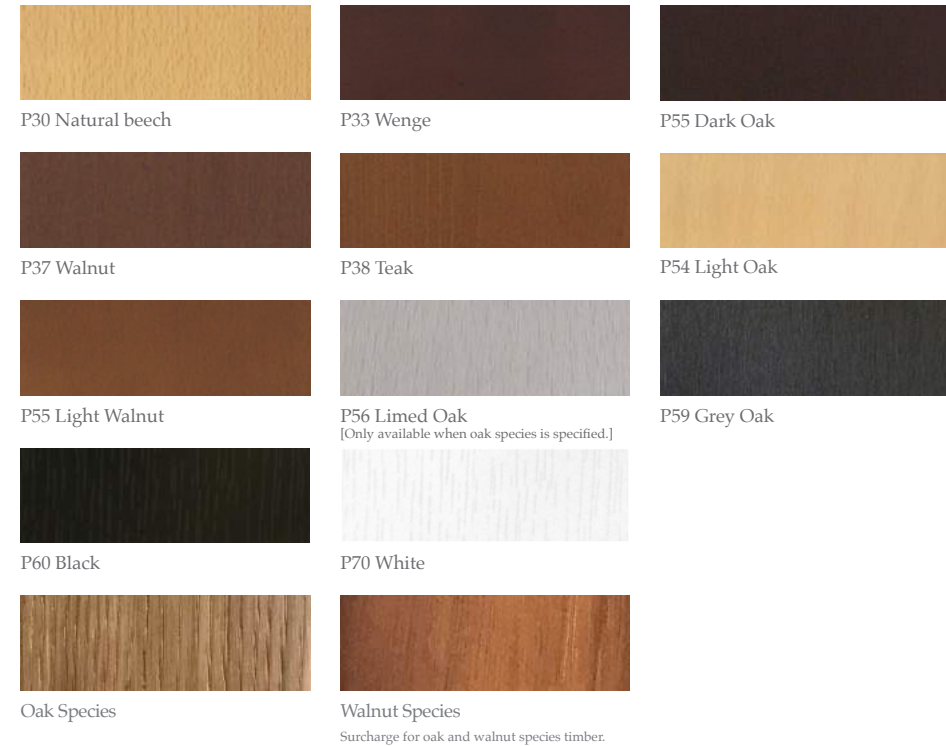
Sales Office:

E. info@morganfurniture.co.uk

T. +44 (0)1243 371 111

Polish Colours

We offer 11 standard polish colours on beech. We are also able to offer oak and walnut species timber.



Metal & Marble Finishes

We offer 5 standard metal finish options.



CH – Chrome



BR – Brass



EP – Epoxy powder, Brass
Also available in White (RAL 9010)
or Black (9005) as standard.



SS – Brushed Stainless Steel



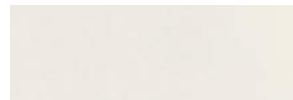
BZ – Brushed Bronze



Corian – Nocturne



Corian – Glacier White



Compact Core – White



Black Via Lactea



Carrara White Marble

The images shown are approximate representations of colour and finish. Please contact our Sales office for samples. Custom RAL are available POA.

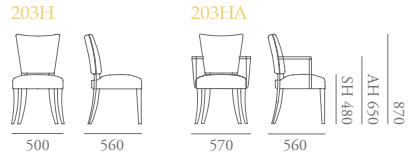
Integrated Power

A number of our collections feature integrated power. From table tops within the City collection, to arm rest and headrests within the Manhattan collection, and most recently, within the upholstery of our Brompton, Manhattan, Ribb, Verona and Valencia seating collections.

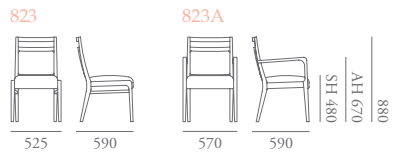
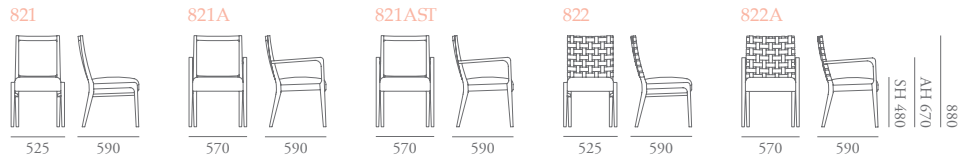
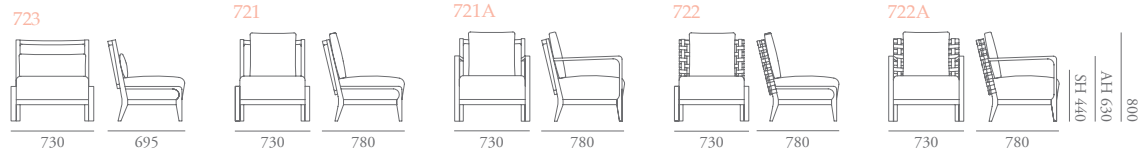
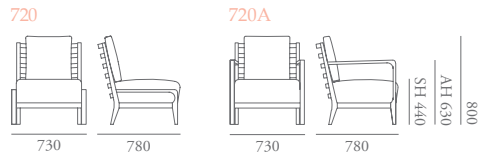
Combining an elegant and luxurious product, with the practicalities of modern life. The options include: three-pin sockets, USB sockets and Aircharge.



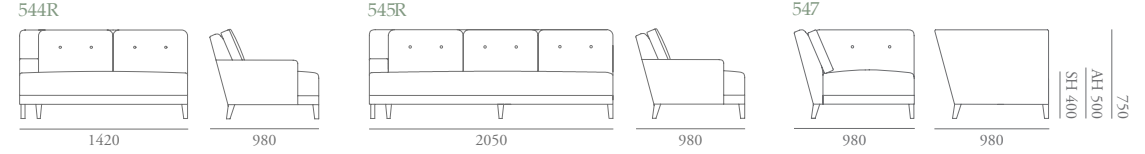
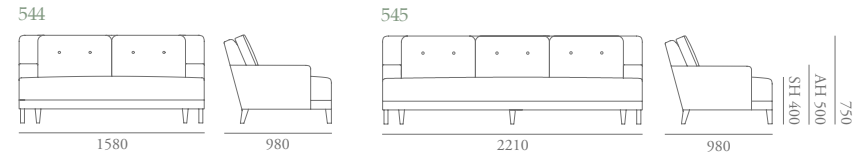
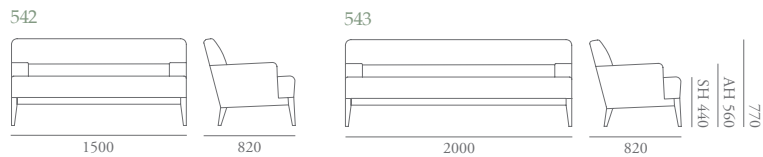
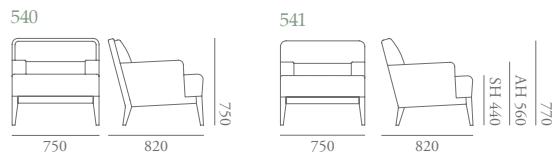
ATLANTIC



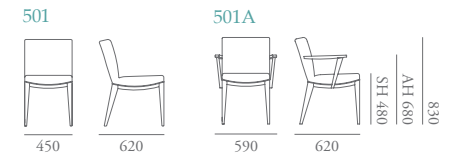
BOSTON



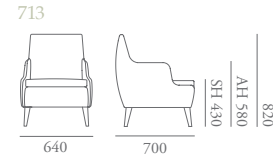
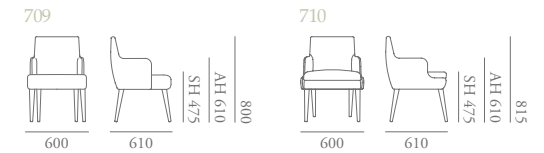
BROMPTON



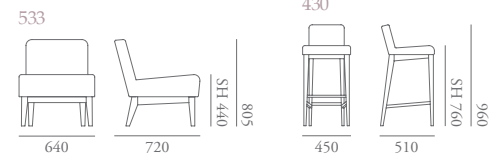
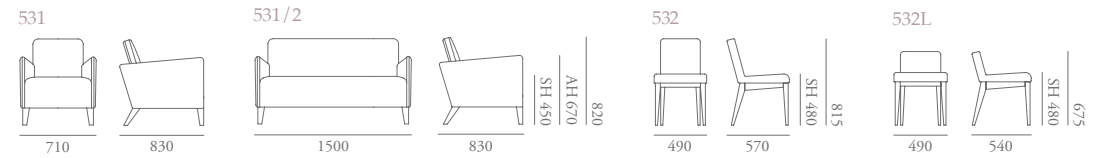
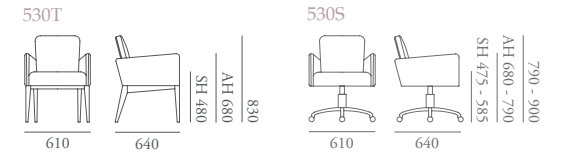
CHELSEA



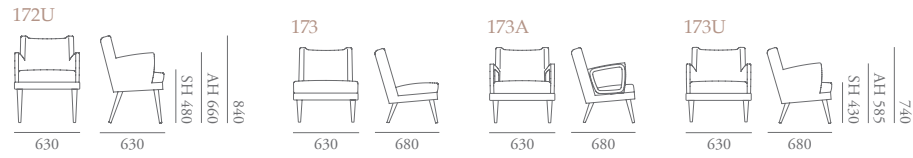
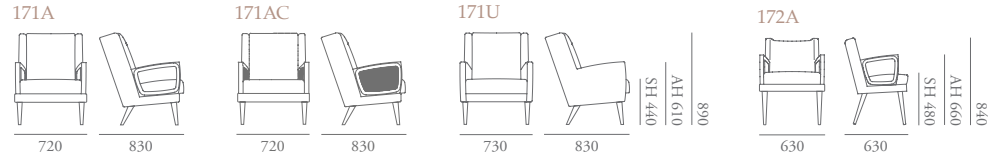
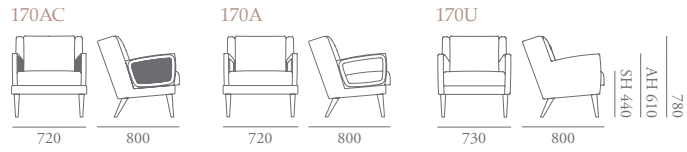
CHEVY



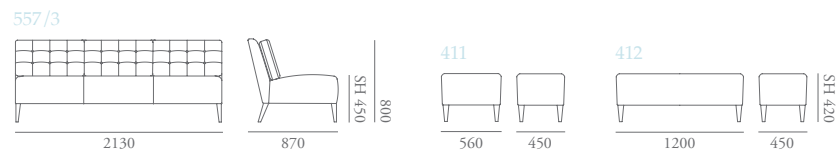
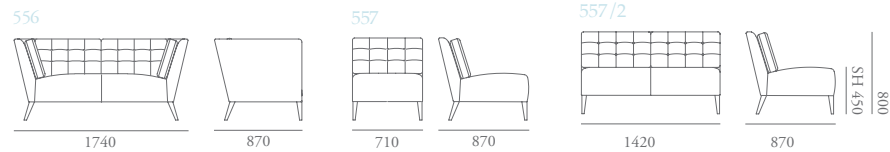
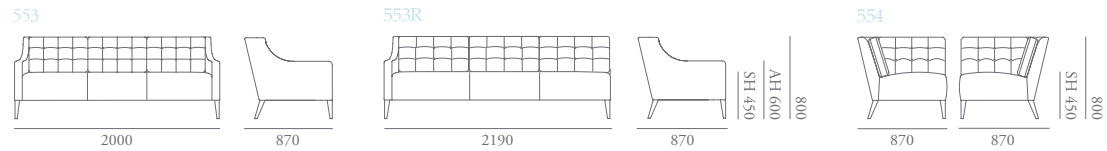
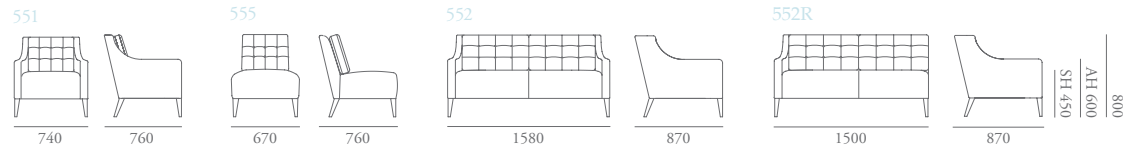
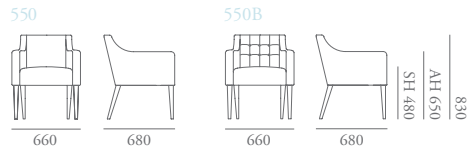
CITY



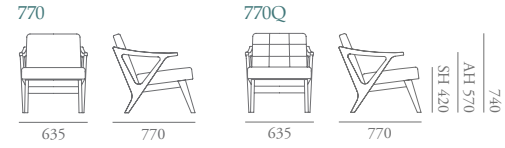
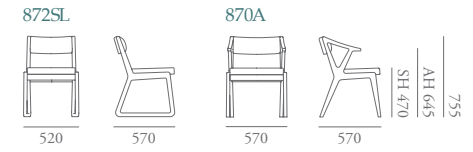
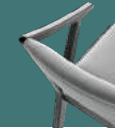
GOODWOOD



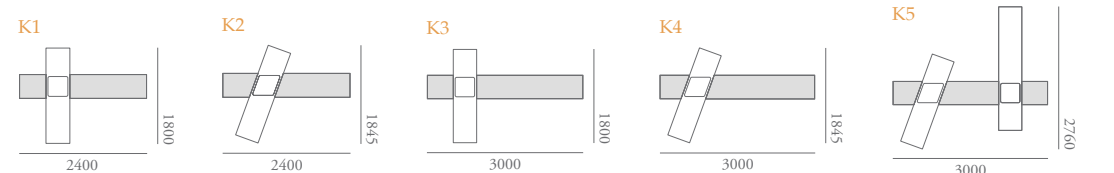
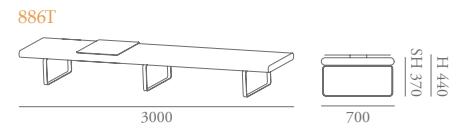
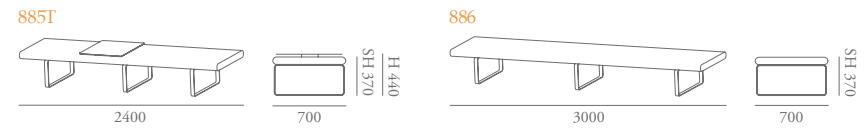
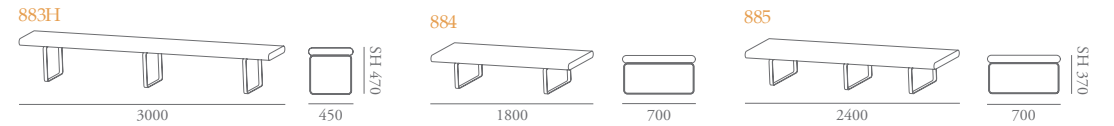
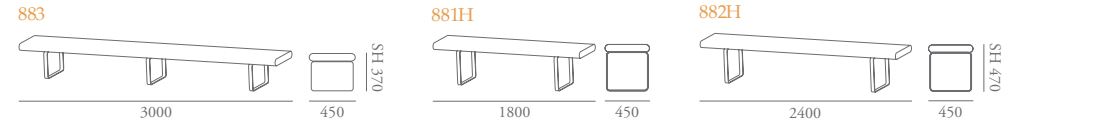
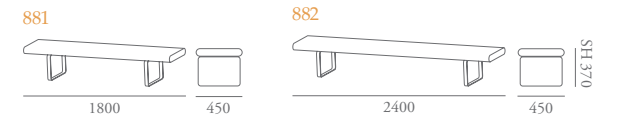
HAMPTON

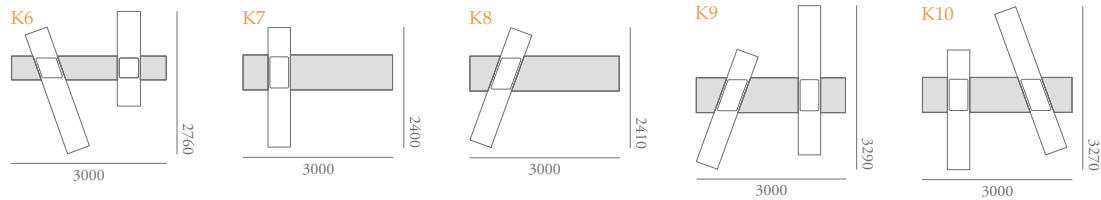


HAVANA

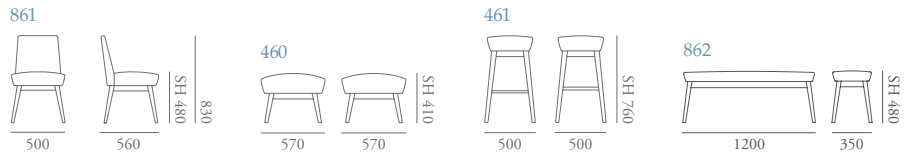
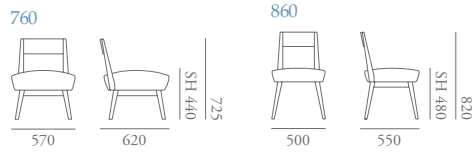


KYOTO

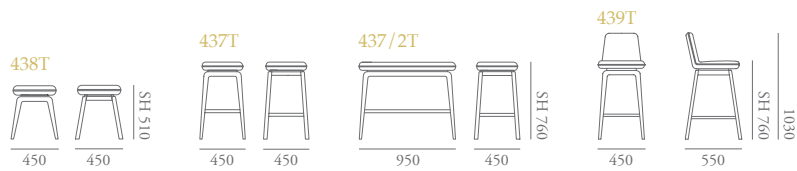
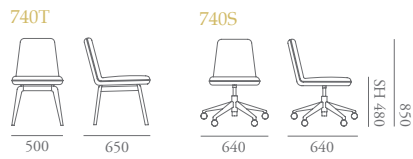




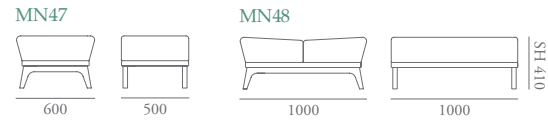
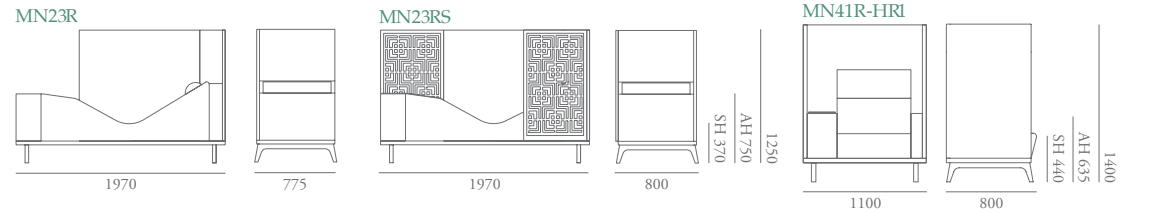
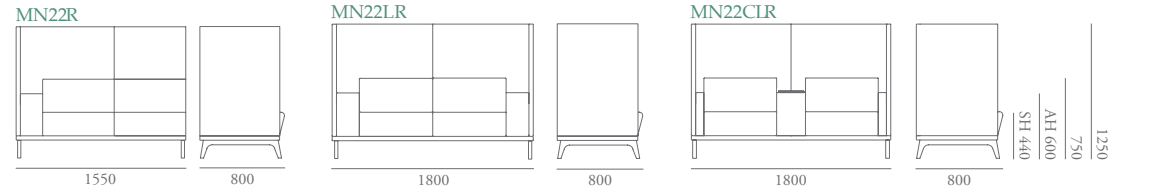
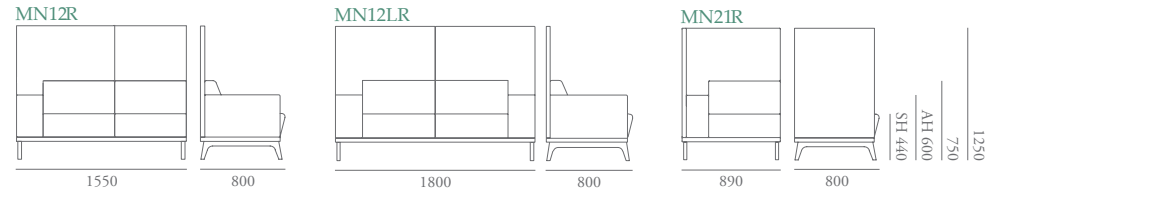
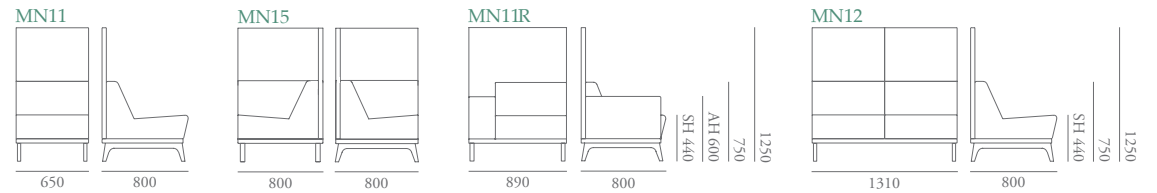
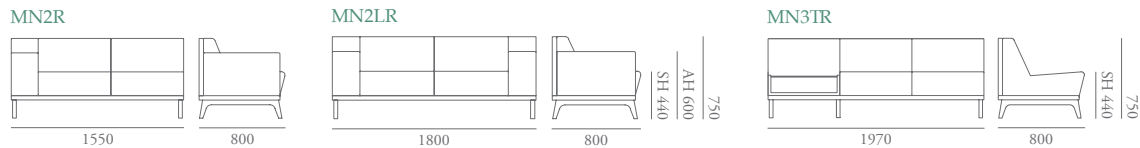
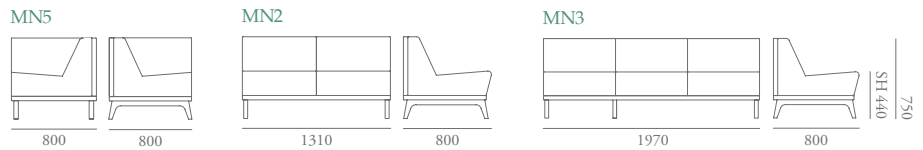
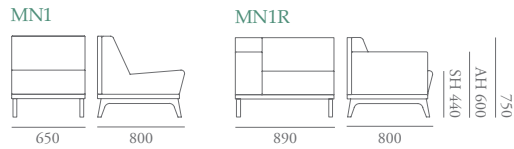
LIMA



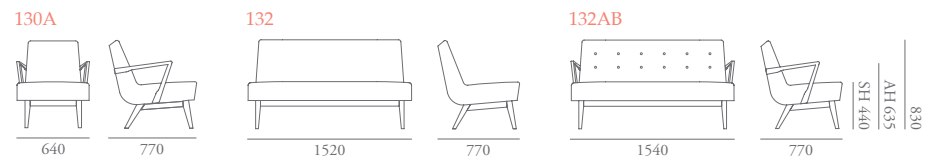
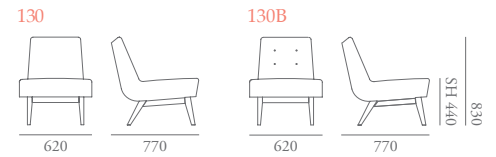
LUCCA

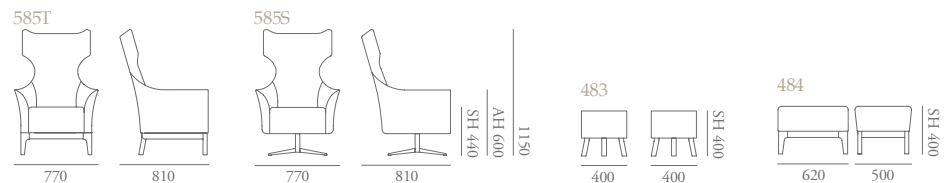
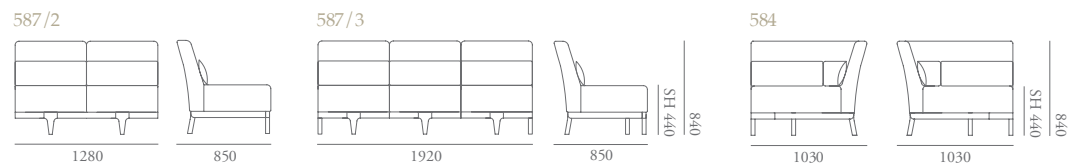
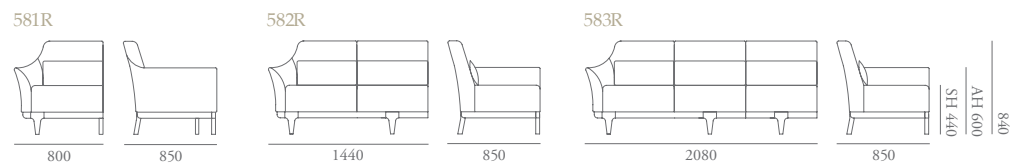
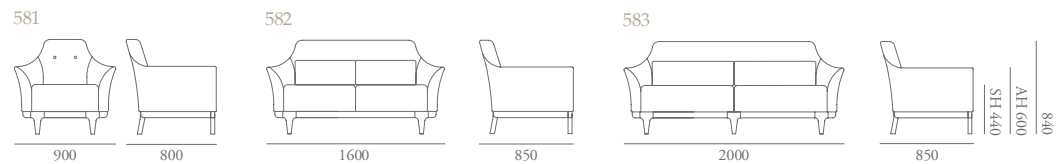
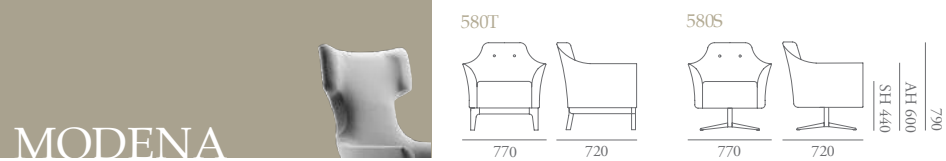
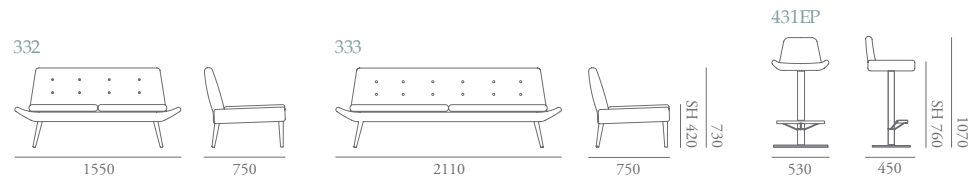
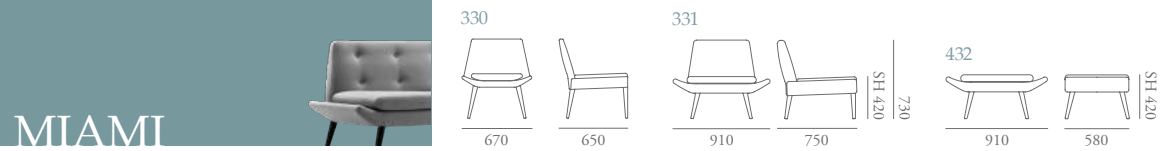
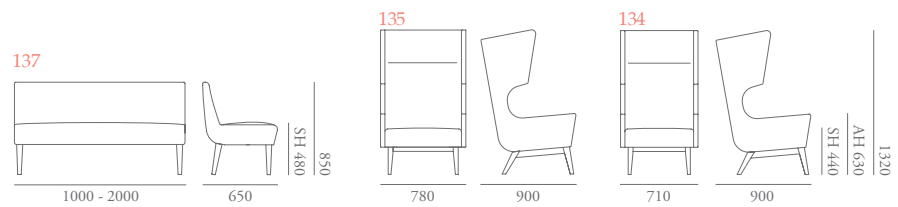


MANHATTAN

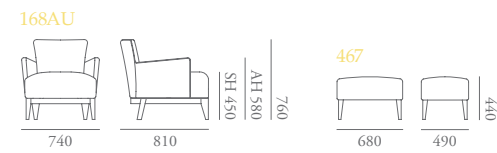
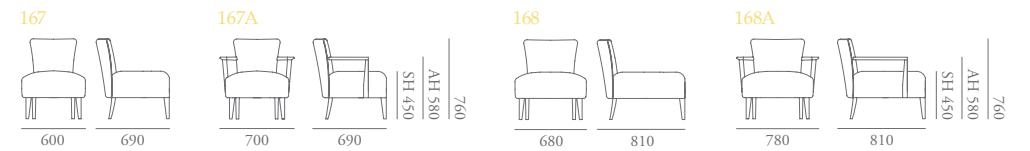
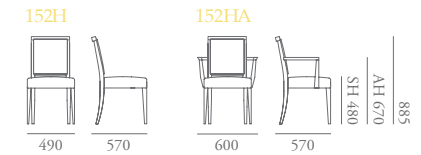


METRO

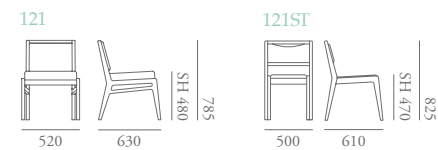
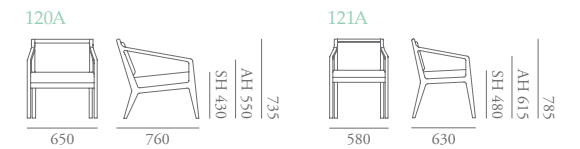




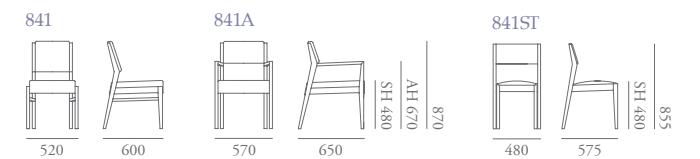
OPERA



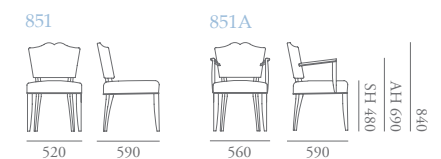
OSLO

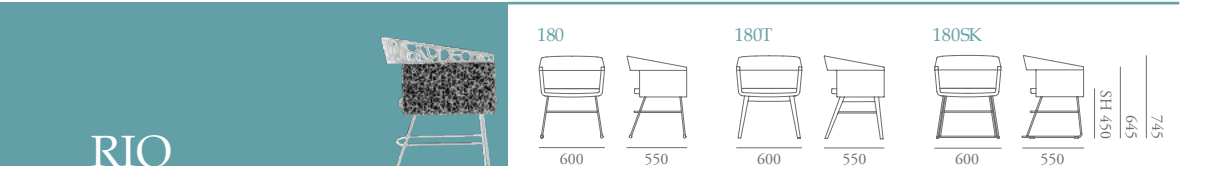
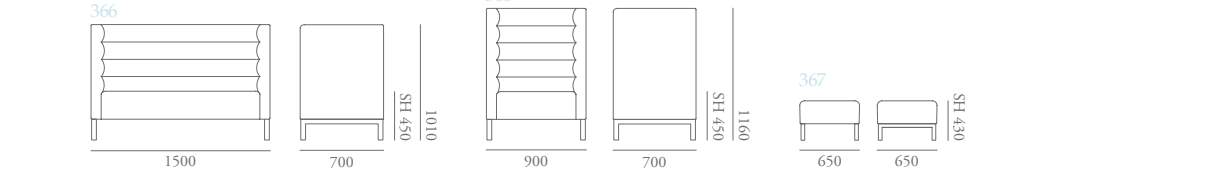
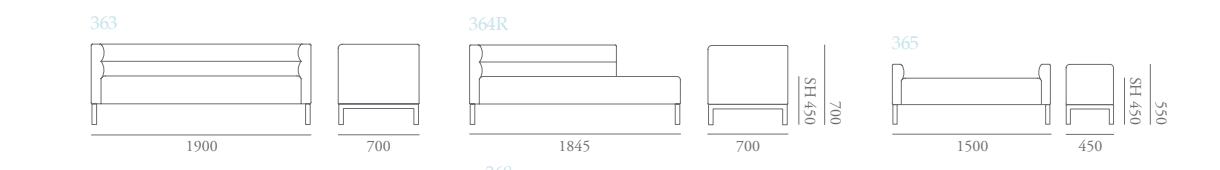
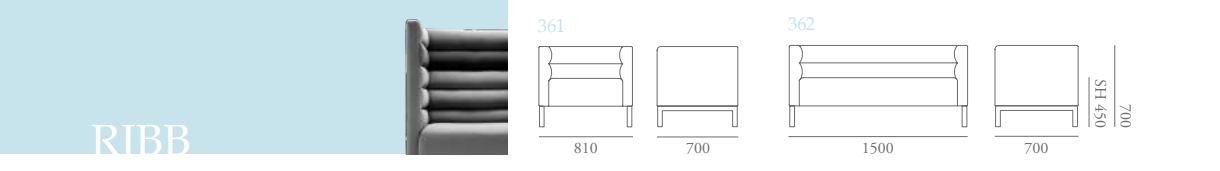
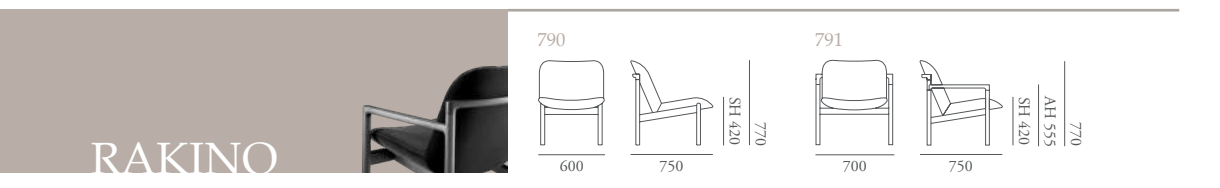
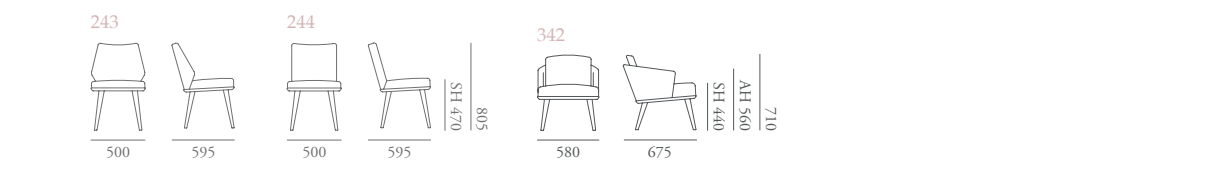
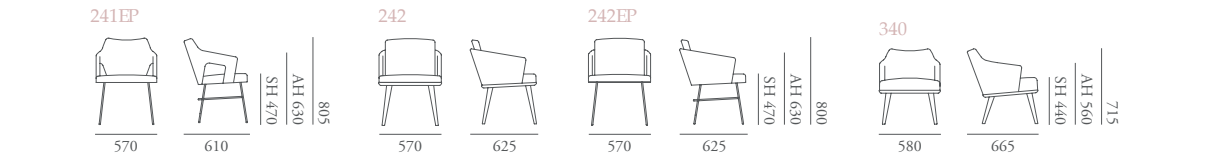
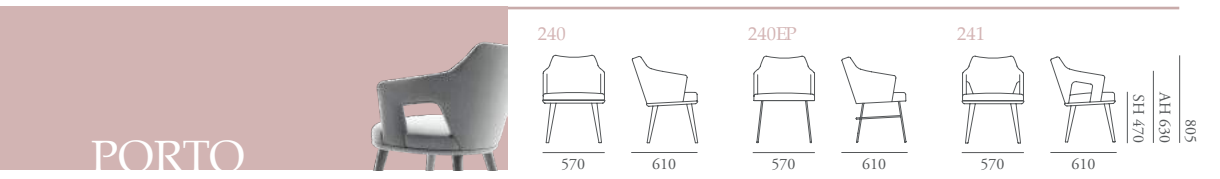
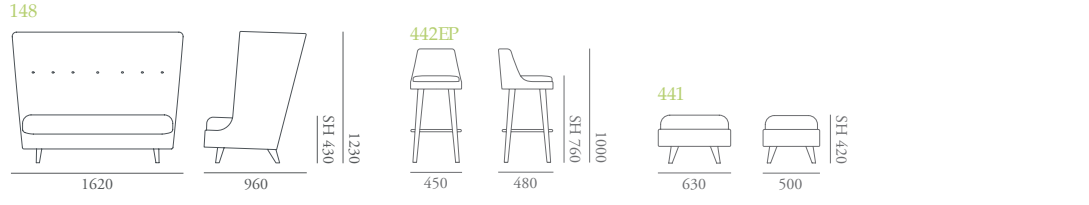
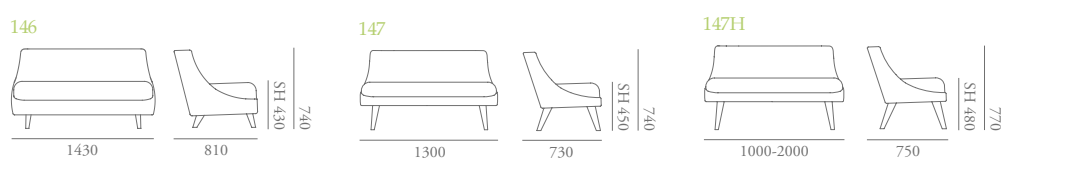
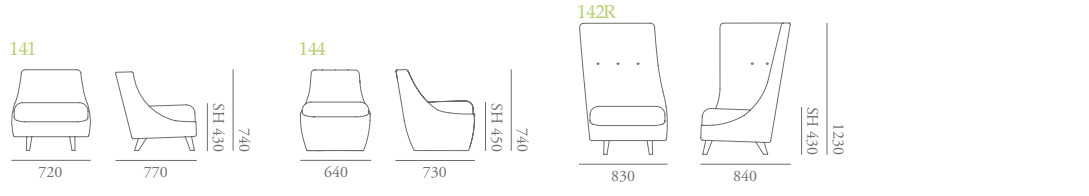
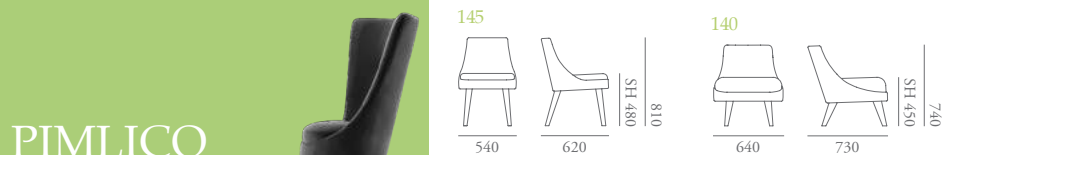
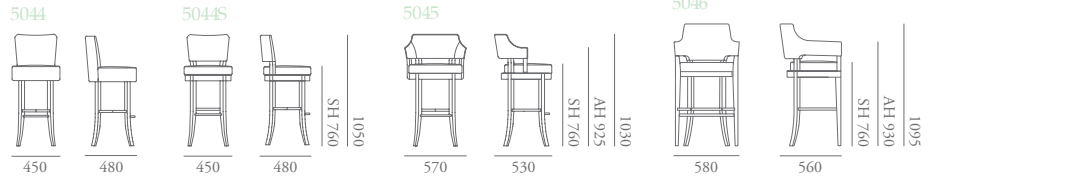
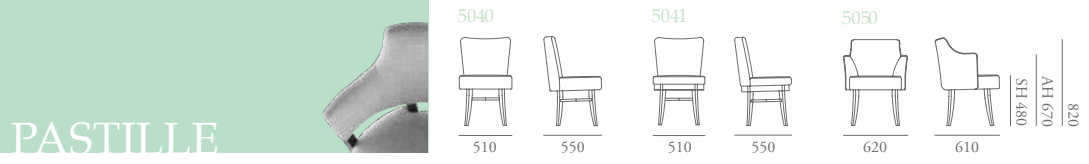
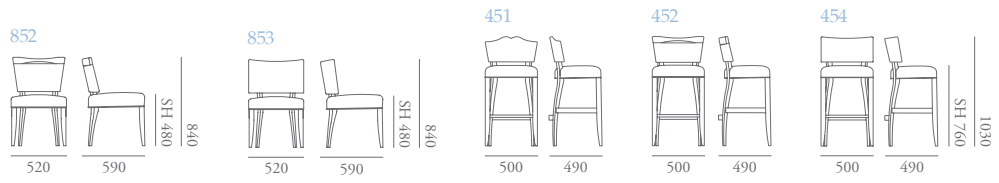


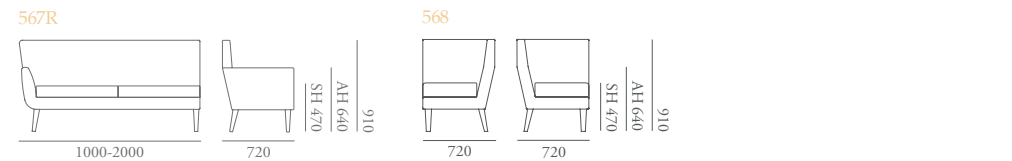
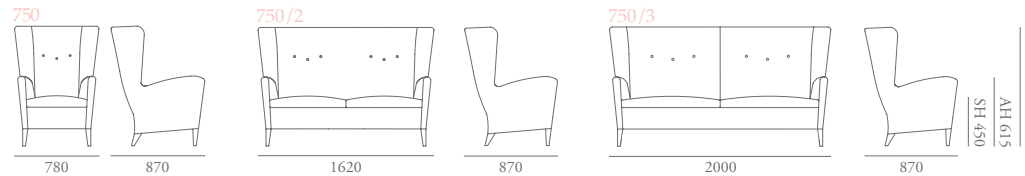
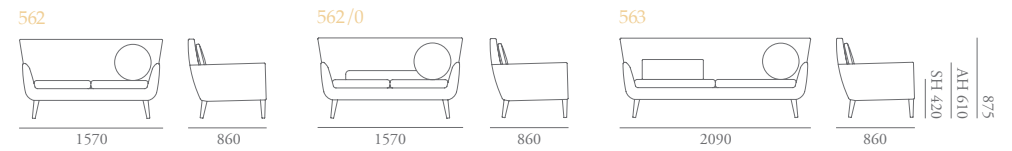
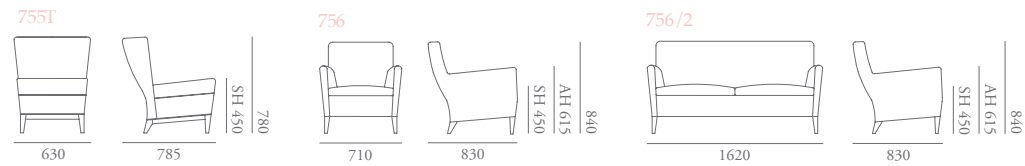
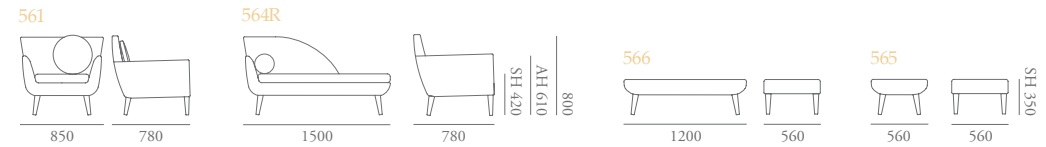
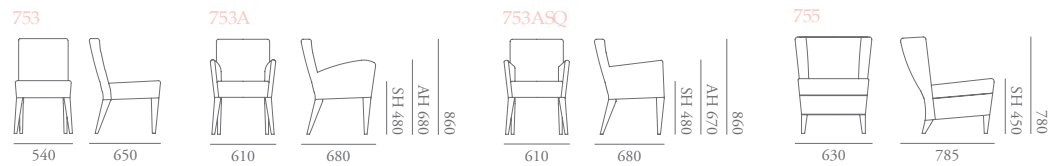
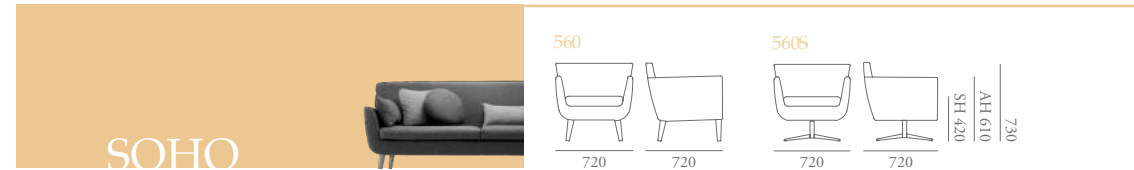
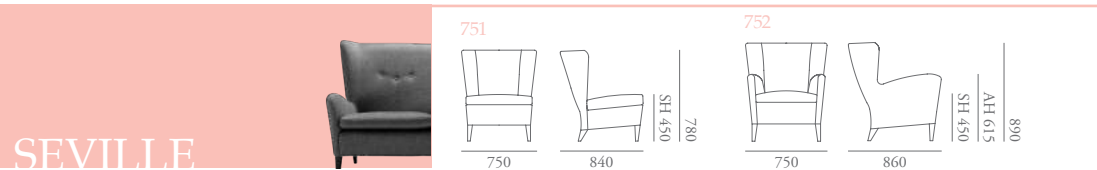
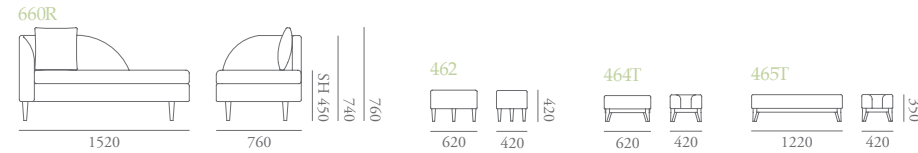
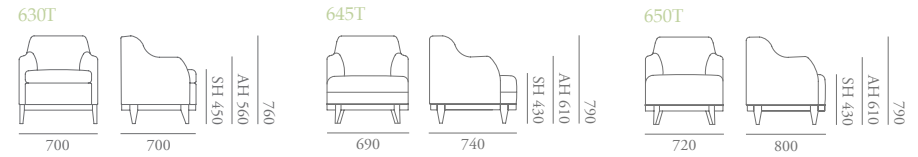
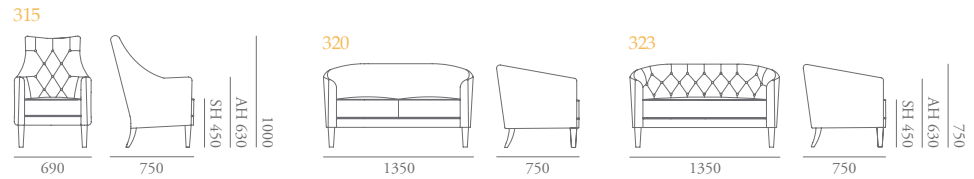
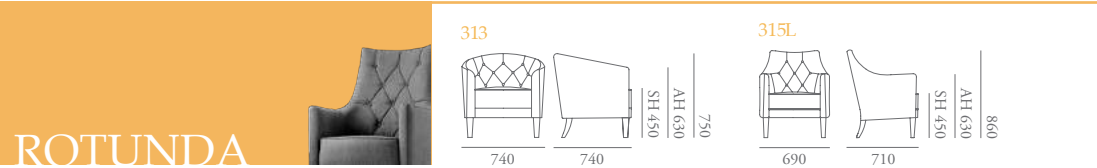
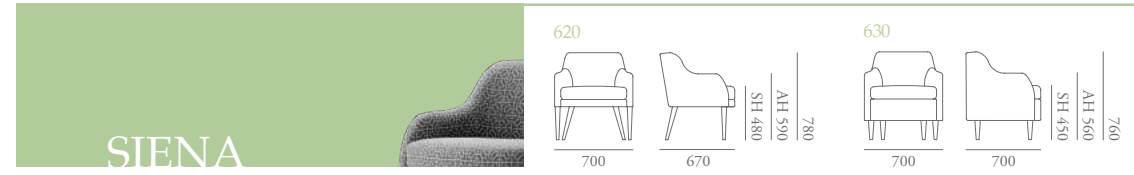
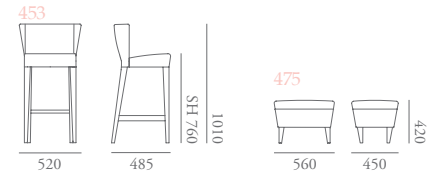
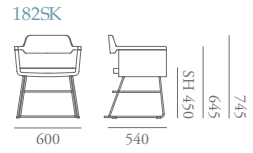
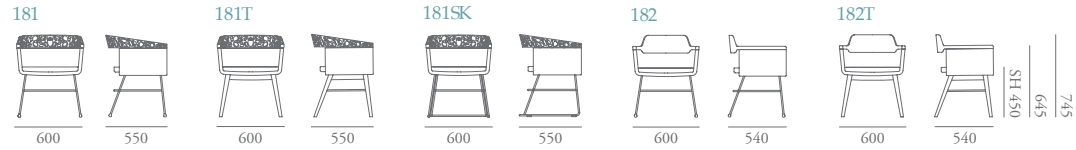
PANAMA



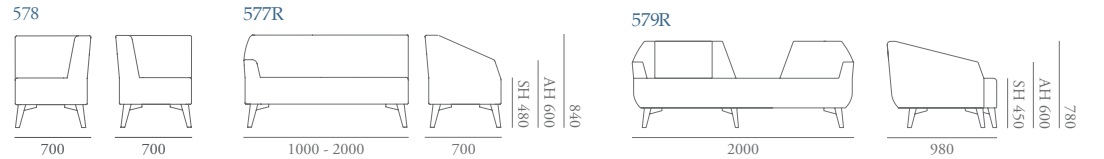
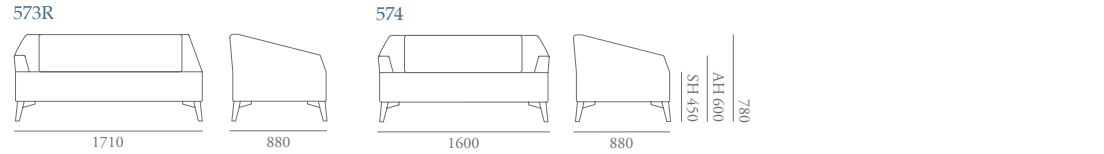
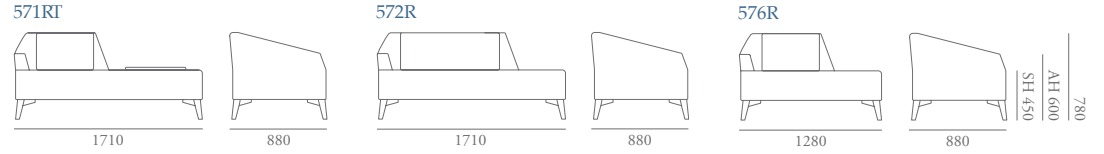
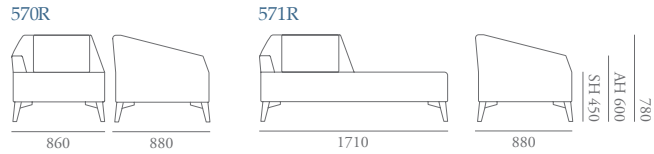
PARIS



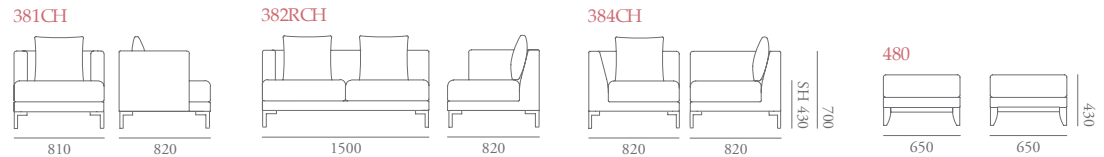
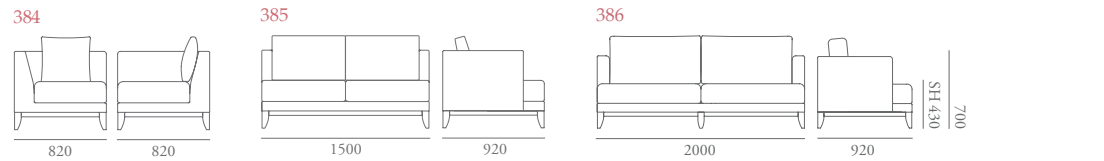
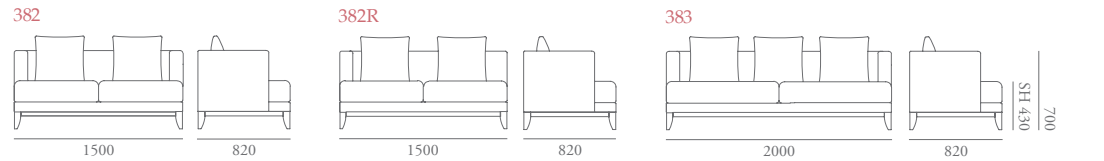
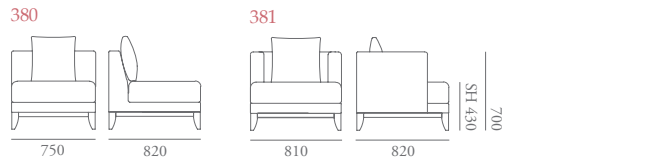




VALENCIA



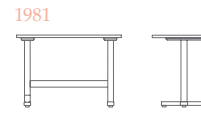
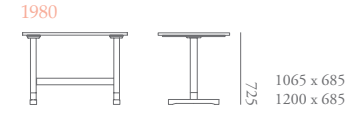
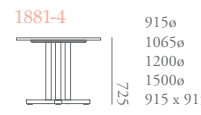
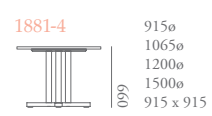
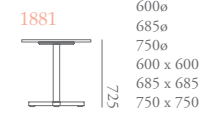
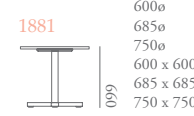
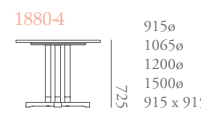
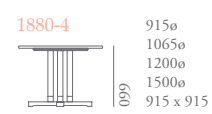
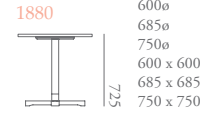
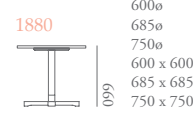
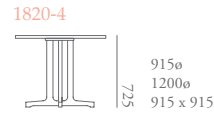
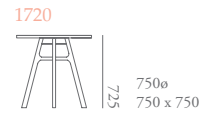
VERONA



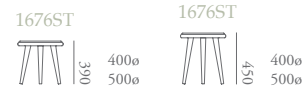
DESIGN
IS
THINKING
MADE
VISUAL.

Saul Bass

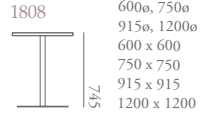
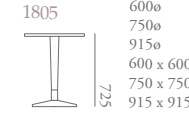
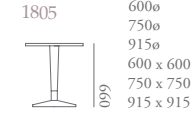
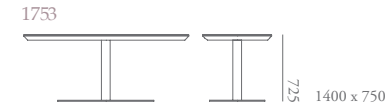
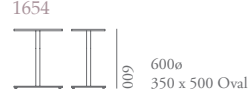
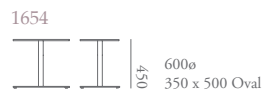
BOSTON



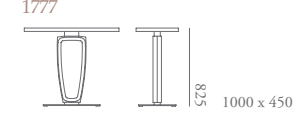
CHEVY



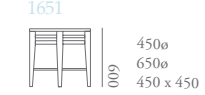
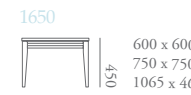
CITY



GOODWOOD



HAMPTON



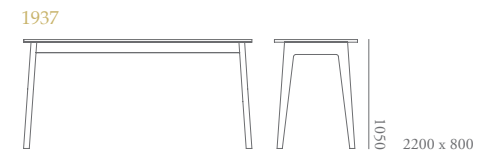
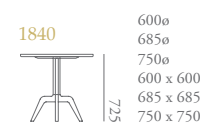
KYOTO



LIMA



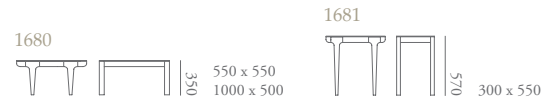
LUCCA



METRO



MODENA



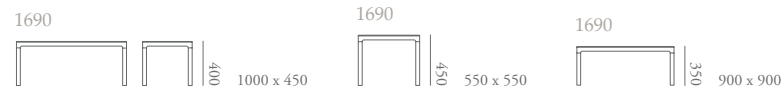
OSLO



PARIS



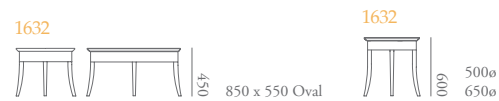
RAKINO



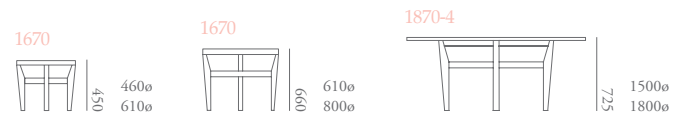
RIO



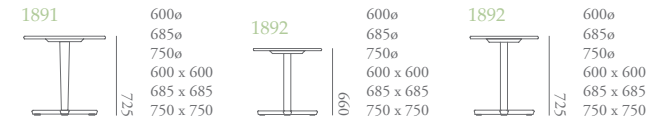
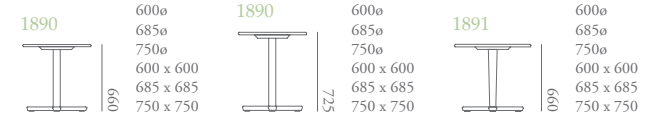
ROTUNDA



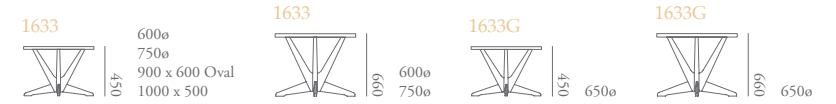
SEVILLE



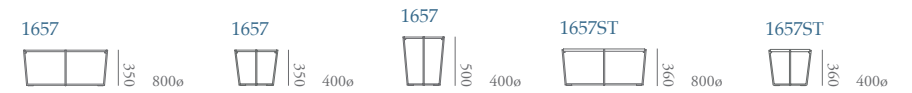
SIENA



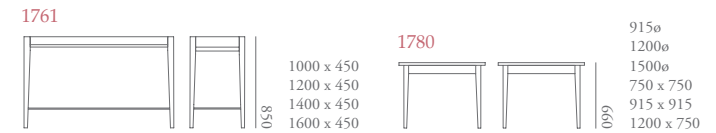
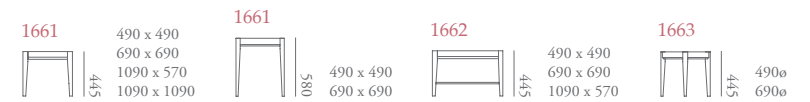
SOHO



VALENCIA



VERONA



*Thank you to all of our clients
and design partners for their support
and for working with us on these
inspiring projects.*

Certificates & Awards



- DGM – Rio Tables
- DGM – Valencia Collection
- DGM – Kyoto Collection
- DGM – Pimlico Collection
- DGM – Brompton Collection
- DGM – Manhattan Collection
- DGM – Lima Dining Chairs
- DGM – City Lounge Chairs
- DGM – Miami Collection


Morgan London
1 Dallington Street
London, EC1V 0BH
+44 (0) 1243 388 000

Morgan Factory
Clovelly Road, Southbourne
Hampshire, PO10 8PQ
Sales: +44 (0) 1243 371 111
info@morganfurniture.co.uk

www.morganfurniture.co.uk
www.morganlondon.uk

 [morganseating](#)

 [morganfurniture](#)

 [morgan-furniture](#)

 [morganseating](#)

 [morganseating](#)

All copyright, design rights and other intellectual property rights are and remain the property of Morgan. © Morgan. All rights reserved. Morgan is the trading name of Morgan Contract Furniture Ltd. Company No. 02985988.