

Inherently flame retardant
print collection



The Bloom Collection



Edmund
Bell

Where design meets performance.
Since 1855.





Bloom Collection

Mastered with a strong emphasis on the watercolour influences of Collier Campbell, BLOOM's spontaneity captures the freshness of pretty country gardens. Scattered florals and blossom evoke a playful summer garden and mix decoratively with leaves and abstract patterns of the entire collection.

With a cool mix of emerald and midnight, blush, magenta and espresso; vivacious shades dance and mix effortlessly with neutral basics.

FLORIS as the main floral bursting with summer delight mixes calmly with AMILIE; another organic inspired easy to use leaf. FINESSE and MONSOON, whilst multi-coloured, add certain calmness and contrast with zig zag lines and subtle drops. MARQUISE on the other hand punctuates with notes of formal trellis work and geometric clarity.

The entire BLOOM story is complimented with METRO and OASIS (printed Sentinel), both waterproof upholstery substrates, and SERENITY; our exclusive FR voile. MATRIX a 3 tone FR strie effect single drape, completes the entire use of fabric complements for successful interior spaces.

BLOOM Sapphire



EMERALD



MAIN IMAGE: Curtain FLORIS Emerald Sheer NUANCE Titanium Sofa DELUXE Pewter Cushions OASIS Emerald FINESSE Emerald MATRIX Lime AMILIE Emerald MONSOON Emerald FLORIS Emerald



BLUSH

MAIN IMAGE: Curtain AMILIE Blush Sheer HARMONY Chalk Cushions FINESSE Blush MARQUISE Green Tea MATRIX Rouge AMILIE Blush FINESSE Blush MONSOON Rouge **Bed Throw** MARQUISE Green Tea

OCHRE



MAIN IMAGE: Curtain FLORIS Ochre Sheer HARMONY Chalk Cushions OASIS Ochre MARQUISE Midnight AMILIE Ochre MONSOON Midnight FLORIS Ochre MONSOON Midnight



MAGENTA

MAIN IMAGE: Curtain FLORIS Magenta Sheer HARMONY Chalk Cushions OASIS Magenta MARQUISE Pepper FINESSE Magenta MATRIX Beetroot AMILIE Magenta

SAPPHIRE



MAIN IMAGE: Curtain FLORIS Sapphire Sheer HARMONY Chalk Sofa DELUXE Pewter Cushions MONSOON Sapphire FLORIS Sapphire MATRIX Pewter FINESSE Sapphire MATRIX Teal



ESPRESSO

MAIN IMAGE: Curtain MARQUISE Ebony Sheer NUANCE Titanium Cushions MARQUISE Ebony FLORIS Espresso MATRIX Pewter AMILIE Espresso MONSOON Ebony FINESSE Espresso **Bed Throw** MANHATTAN Peppercorn

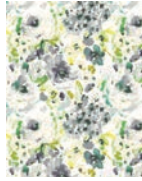


MAIN IMAGE: Curtain FINESSE Espresso Sheer NUANCE Titanium Sofa OASIS Latte Cushions
AMILIE Espresso MARQUISE Ebony

BLOOM COLLECTION

FLORIS

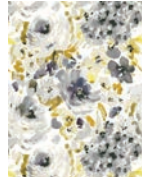
Pattern repeat:
H 35cm x V 35cm



Emerald



Blush



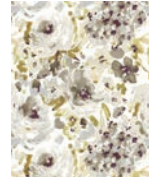
Ochre



Magenta



Sapphire



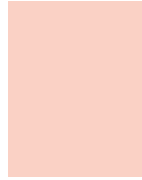
Espresso

OASIS

Pattern repeat: NA



Emerald



Blush



Ochre



Magenta



Sapphire



Latte

MARQUISE

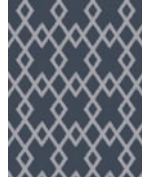
Pattern repeat:
H 7cm x V 10.2cm



Zinc



Green Tea



Midnight



Pepper



Citrine



Ebony

AMILIE

Pattern repeat:
H 35cm x V 35cm



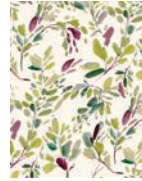
Emerald



Blush



Ochre



Magenta



Sapphire



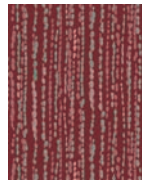
Espresso

MONSOON

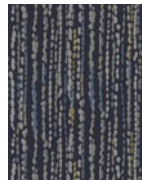
Pattern repeat:
H 8.75cm x V 8.75cm



Emerald



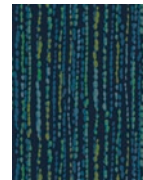
Rouge



Midnight



Magenta



Sapphire



Ebony

FINESSE

Pattern repeat:
H 17.5cm x V 34.5cm



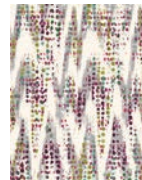
Emerald



Blush



Ochre



Magenta


















Sapphire



Espresso

For use as a guide only. Whilst the colours in this brochure have been reproduced as accurately as possible, we are restricted by the limitations of 4 colour litho printing and there may be slight differences when printed on fabric.

TECHNICAL SPECIFICATION

Product code	Product information	Suggested end use	Flame retardant specification	Care instructions
6910	Inherently Flame Retardant Panama 100% Polyester 150cm / 59 inches 240gsm / 7.1 oz sqy +/- 5%	Curtaining	B1, BS 5867 Part 2 B & C, IMO FTP Code 2010 Part 7	 Washable at 71°C for thermal disinfection
6999	Inherently Flame Retardant Mezzo Brushed Panama 100% Polyester 150cm / 59 inches 220gsm / 6.5 oz sqy +/- 5%	Curtaining	B1, BS 5867 Part 2 B & C, IMO FTP Code 2010 Part 7	 Washable at 71°C for thermal disinfection
6913	Inherently Flame Retardant Satin Weave 100% Polyester 142cm / 56 inches 230gsm / 6.8 oz sqy +/- 5%	Curtaining, Bedding, Cushions	M1, B1, BS 5867 Part 2 B & C, EN 13773, BS 7175 Source 0, 5 & 7, IMO FTP Code 2010 Part 7 & 9	 Washable at 71°C for thermal disinfection
6994	Inherently Flame Retardant Nimbus 100% Trevira CS Polyester 140cm / 55 inches 230gsm / 6.8 oz sqy +/- 5%	Curtaining, Bedding, Cushions	B1, BS 5867 Part 2 B & C, IMO FTP Code 2010 Part 7, BS 5815 Part 3	 Washable at 71°C for thermal disinfection
6934	Inherently Flame Retardant Quatro 100% Polyester 142cm / 56 inches 230gsm / 6.8 oz sqy +/- 5%	Curtaining, Bedding, Cushions	M1, B1, BS 5867 Part 2 B & C, BS 7175 Source 0, 5 & 7, IMO FTP Code 2010 Part 7 & 9	 Washable at 71°C for thermal disinfection
6900	Inherently Flame Retardant Plain Weave 100% Polyester 141cm / 56 inches 145gsm / 4.3 oz sqy +/- 5%	Curtaining, Bedding	M1, BS 5867 Part 2 B & C, BS 5815 Part 3, BS 7175 Source 0, 5 & 7, IMO FTP Code 2010 part 7	 Washable at 71°C for thermal disinfection
6975 & 6974	Inherently Flame Retardant Enigma Dimout 100% Polyester 146-148cm / 57-58 inches (6975) or 292cm / 115 inches (6974) 298gsm / 8.8 oz sqy +/- 5%	Curtaining (Dimout)	M1, B1, EN 13773, BS 5867 Part 2 B & C, IMO FTP Code 2010 part 7, NFPA 7011+2, Classe Uno	 Washable at 71°C for thermal disinfection
6904	Inherently Flame Retardant Venus Dimout 100% Polyester 150cm / 59 inches 250gsm / 7.4 oz sqy +/- 5%	Curtaining (Dimout)	M1, B1, BS 5867 Part 2 B & C, BS 7175 Source 7, NFPA 7011 + 2, CA19, IMO FTP Code 2010 Part 7, Classe Uno	 Washable at 71°C for thermal disinfection
6755 & 6750	Flame Retardant Discovery Blackout 100% Polyester / Acrylic back coating 145cm / 57 inches (6755) or 290cm / 114 inches (6750) 410gsm / 12.1 oz sqy +/- 5%	Curtaining (Blackout)	B1, BS 5867 Part 2 B, EN 13773, IMO Module B, IMO FTP Code 2010 Part 7, NFPA 7011+2, CA19, Classe Uno	 Iron on non-coated side
6911 & 6952	Inherently Flame Retardant Blackout 100% Polyester / Acrylic back coating 142cm / 56 inches (6911) or 280cm / 110 inches (6952) 240gsm / 7.1 oz sqy +/- 10%	Curtaining (Blackout)	BS 5867 Part 2 B, IMO FTP Code 2010 Part 7, NFPA 7011 + 2, Classe Uno	 Iron on non-coated side
6957 & 6958	Flame Retardant Outblack Silk Blackout 100% Polyester / Acrylic back coating 142cm / 56 inches (6957) or 284cm / 112 inches (6958) 285gsm / 8.4 oz sqy +/- 5%	Curtaining (Blackout)	B1, BS 5867 Part 2 B, IMO FTP Code 2010 Part 7, EN 13773, NFPA 7011 + 2	 Iron on non-coated side
6896	Inherently Flame Retardant Blackout 100% Polyester / Acrylic back coating 140cm / 55 inches 300gsm / 8.8 oz sqy +/- 5%	Curtaining (Blackout)	M1, B1, BS 5867 Part 2 B, IMO FTP Code 2010 Part 7	 Iron on non-coated side
6996 & 6998	Inherently Flame Retardant Libra Blackout 100% Polyester / Acrylic back coating 145cm / 57 inches (6996) or 280cm / 110 inches (6998) 360gsm / 10.6 oz sqy +/- 5%	Curtaining (Blackout)	BS 5867 Part 2 Type B, IMO FTP Code 2010 Part 7	 Iron on non-coated side
9017	Inherently Flame Retardant Illusion Sheer 100% Polyester 300cm / 118 inches 70gsm / 2.1 oz sqy	Curtaining (Sheer)	M1, EN 13773, BS 5867 Part 2 C, IMO FTP Code 2010 Part 7, Classe Uno	 Iron on non-coated side
9049 & 9000	Flame Retardant Sheer 100% Polyester 150cm / 59 inches (9049) or 300cm / 118 inches (9000) 50gsm / 1.5 oz sqy +/- 3%	Curtaining (Sheer)	M1, BS 5867 Part 2 C, IMO FTP Code 2010 Part 7	 Iron on non-coated side
6978	Flame Retardant Sentinel MRSA 100% Polyester / Acrylic back coating 137cm / 54 inches 350gsm / 10.3 oz sqy +/- 5%	Waterproof Upholstery >100,000 Martindale	BS 5852 Crib 5, IMO FTP Code 2010 Part 8	Routine soap and warm water sponging is effective for ordinary soiling. Fresh stains, both water and oil based are easily removed using most water based household cleaning agents. Antiseptic cleaning agents can be used and more stubborn stains may be required a safe solvent such as Isopropyl Alcohol or mineral spirit. A half cup of household bleach for 5 litres of water can also be used as a useful disinfectant. Best cleaning is wipe & dry technique. Full immersion is not recommended. Not dry cleanable. Excellent stain removal has been observed for: Blood, Urine, Grease, Ink, Coffee, Grape Juice, Loline, Betadine, Ketchup, Mustard, Salad dressing and suntan lotion. Do not dry clean Will not support microbial growth including: Aspergillus Niger, E Coli, Altinata, Salmonella, Penicillium, MRSA, Cladosporium Herbarism. AATCC test 147 - 1998
6914	Flame Retardant Enduracare MRSA 100% Polyester impregnated and multi-coated microporous polymers 140cm / 55 inches 350gsm / 10.3 oz sqy +/- 5%	Waterproof Upholstery >50,000 Martindale	BS 5852 Crib 5, IMO FTP Code 2010 Part 8	

Soapless detergent to be used on all of the above base cloths. No fabric conditioners/softeners or freshener sprays to be used as this can adversely affect FR properties. A tolerance of +/- 3% should be allowed for on pattern repeats as it can vary from quality to quality. Shade variations may occur batch to batch but we will endeavour to maintain good colour continuity. Please inspect all goods before cutting as no claims can be accepted or exchanges made once the material has been cut.



**Where design meets performance.
Since 1855.**

Edmund Bell & Company Limited
Unit E1A, Kingsway Business Park
John Boyd Dunlop Drive
Rochdale, OL16 4NG

Tel: + 44 (0)1706 7170 70
Fax: + 44 (0)1706 7170 71
sales@edmundbell.com
www.edmundbell.com



**Edmund
Bell**